

Introduction

This adverse weather & wind management plan has been developed to ensure proactive and reactive wind management should Wild Roots Festival experience unusually high winds/gusts during the event. As we have a range of temporary structures on site it is important that ongoing monitoring of weather conditions take place throughout the event to ensure that Event Control can remain informed of any change in conditions. Local weather conditions will be checked on an hourly basis using Met.ie and Met Eireann can be contacted directly for site specific weather forecasting should the need arise.

There will be two anemometers installed on the event site – one on the Main Stage Structure and the other at the Wild West Stage (at the highest position available). A third anemometer will be available for placement elsewhere should the need arise.

Guidance has been taken from the UK's "Guidance for the Management & Use of Stages and related temporary structures", 2015. This guidance incorporates both temporary structures and a site-wide guide to wind management for the safety of the public, performers, and all other workers on the event site. Decisions regarding the continuation of the event or the cessation of use of a temporary structure, will be made well in advance of winds reaching the operational wind loading capacity of the relevant structure.

Wind Reference Chart

Beaufort Scale & Description		Average Speed at 10 meters above ground	
0	Calm	Meters Per Second	Miles Per Hour
1-3	Light Breeze	0.3 to 5.4 m/s	0.7 to 12.2 Mph
4	Moderate Breeze	5.5 to 7.9 m/s	12.3 to 17.8 Mph
5	Fresh Breeze	8.0 to 10.7 m/s	17.9 to 24.0 Mph
6	Strong Wind	10.8 to 13.8 m/s	24.1 to 31.0 Mph
7	Nr Gale Force	13.9 to 17.1 m/s	31.1 to 38.3 Mph
8	Gale Force	17.2 to 20.7 m/s	38.4 to 46.4 Mph
9	Strong Gale Force	20.8 to 24.4 m/s	46.5 to 54.7 Mph
10	Storm Force	24.5 to 28.4 m/s	54.8 to 63.6 Mph

Wind Planning & Response

Planning	Normal Conditions	Action Level 1	Action Level 2	Action Level 3 STOP!
Site topography & prevailing winds	Monitor Forecast Review	Alert Risk Assess	Enhanced Action Response Plan	May involve Event Cancellation

The following action chart is a guide to the operation monitoring of wind conditions throughout the event.

Wind Speed Metres/sec	Monitoring Interval	Action Level	Action
Below 6	8 hourly		Regular Weather Forecast Review
7 – 11	Hourly		Regular on Site Assessment
12 – 18	30 mins	1	Prepare to halt erection operations until safe working conditions have resumed. During Phase D (Show) it is likely that Show Stop will occur in this range due to factors other than TDS safety.
18 – 22	15 mins	2	Site Safety meeting and risk assessment Prepare for full site evacuation
Over 22	Constant	3	Site evacuation procedure to be implemented

Planning Stage

Careful consideration will be given to wind management throughout the planning phase. Relevant documentation and advice will be sought from all suppliers and the event's independent Structural Engineer. The site manager will consider the overarching site layout, taking into account each structure's orientation in relation to its topographical location. A full site assessment will be conducted to ensure that wind is taken into account and that design changes are considered and implemented where necessary.

Normal Conditions

Monitoring of the wind conditions to be conducted by Event Control throughout the event.

Action Level 1

When monitoring registers a gust of wind speed in excess of 12 metres per second, in conjunction with an increasing general trend of recorded wind speeds the, subject to a live risk assessment, all staff involved in the installation, monitoring, managing, or dismantling of a the structure(s) should be put on alert that action may be required to delay works or discontinue the use of the structure / area until safe working conditions have returned.

- Risk Assessments and structural inspections to be conducted by the event's safety management team.
- Images and videos to be captured to ensure that the impact of current wind conditions is logged
- Increased monitoring to take place until wind levels have reduced

Action Level 2

Consideration to be given to removing / dropping the following should gusting become hazardous:

- Festival Flags
- Screens
- Stage Sets
- Drapes
- Lighting Rig
- PA Rigs
- Large Banners & Signage

When exposed to high winds / gusts the additional wind load becomes dynamic rather than static and can add undue strain when attached to a structure. Some of the smaller stages and performance areas may also have low level wall sheeting / scrim that will also need to be removed at certain wind speeds. The requirements for this action and any potential issues that may arise will be clearly documented by the relevant contractor in advance of the event.

All relevant staff to be notified that preparations should be made to clear and close venues or to implement a show stop procedure. Full or partial evacuation procedures should be prepared should wind speeds increase making site conditions unsafe. All management staff to be informed so that pre-emptive action can be taken.

Action Level 3

When monitoring registers a gust wind speed in excess of 22 meters per second in conjunction with an increasing general trend of high recorded wind speeds, and determined by a live risk assessment:

- The stage / venue may have to be evacuated and a safe perimeter imposed around all affected temporary structures.
- An area / site wide evacuation may have to be implemented
- All key stakeholders to be informed of the situation by Event Control

Draft Event Management Plan

- Any areas with “at risk” structures must immediately become a hard hat area for essential personnel only
- Before performances resume, or deconstruction begins, the independent structural engineer must complete an inspection and new sign off documentation

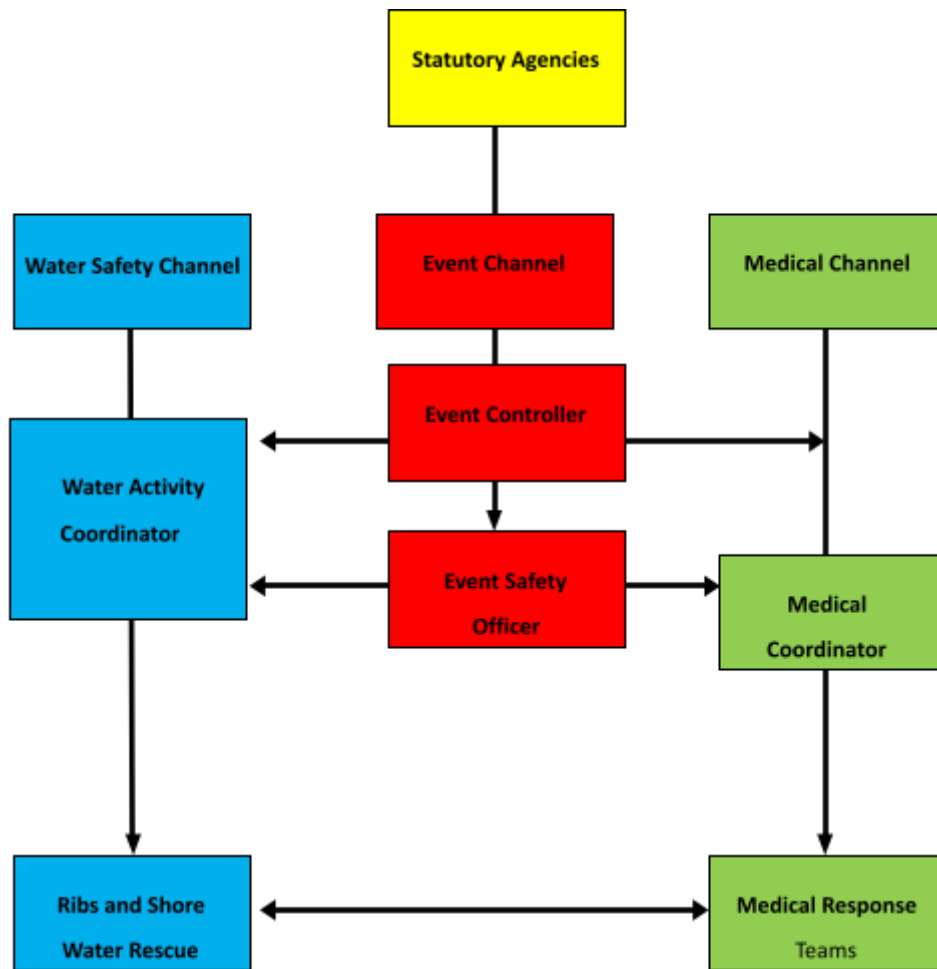


Figure 1 Communications Network