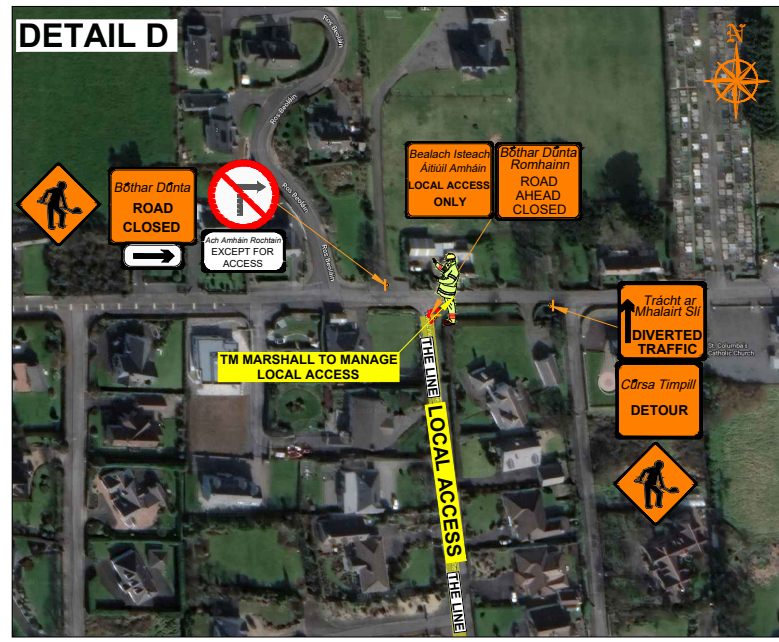
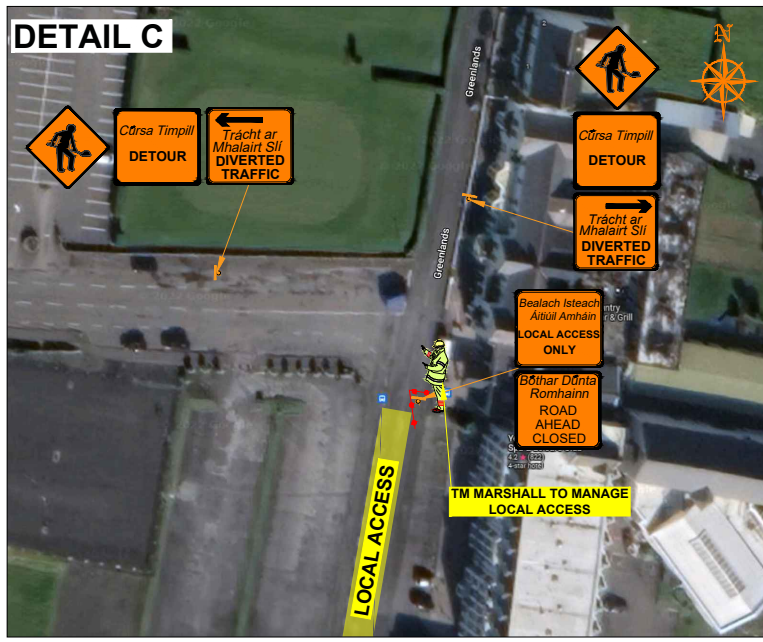
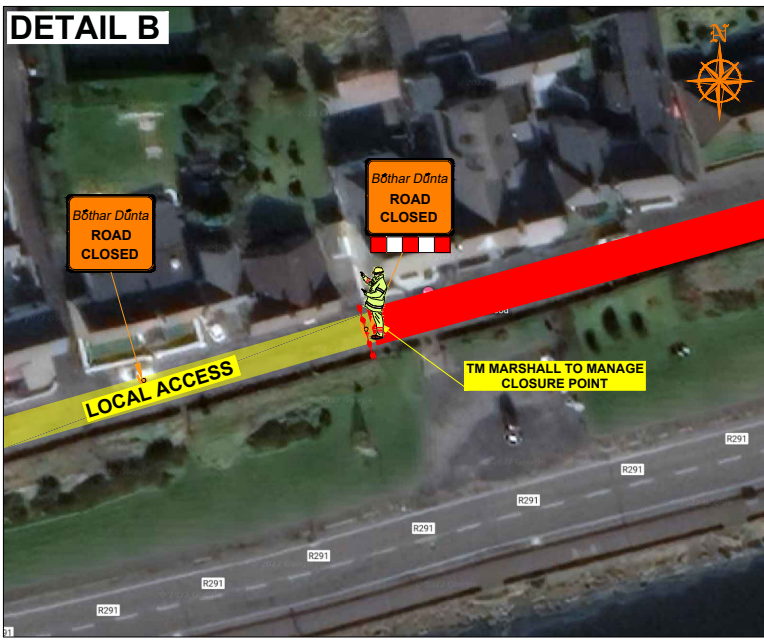
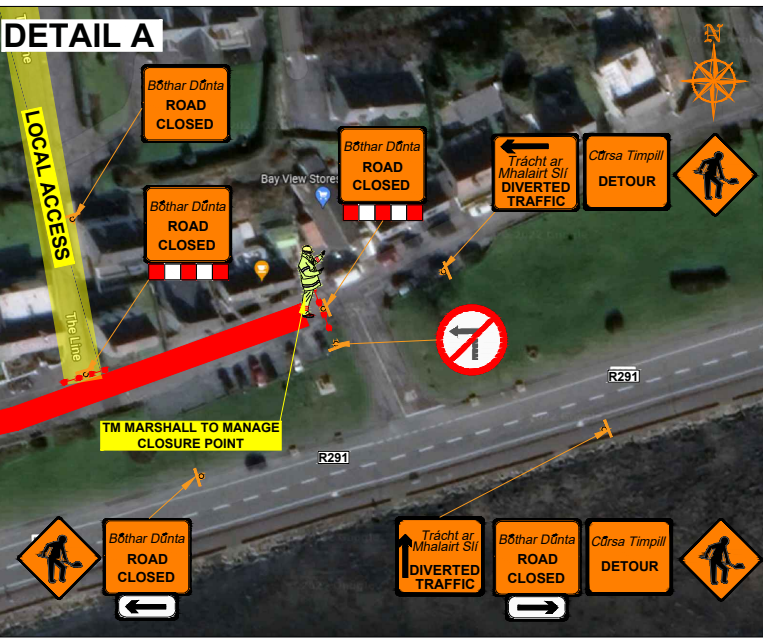
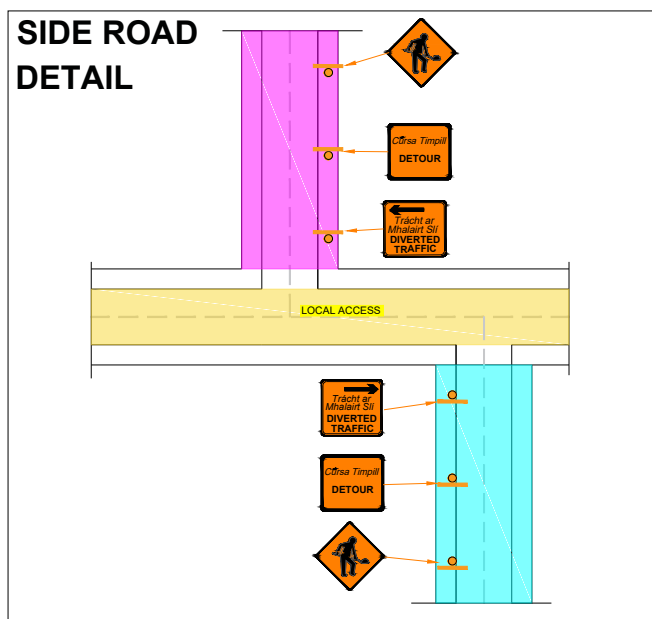
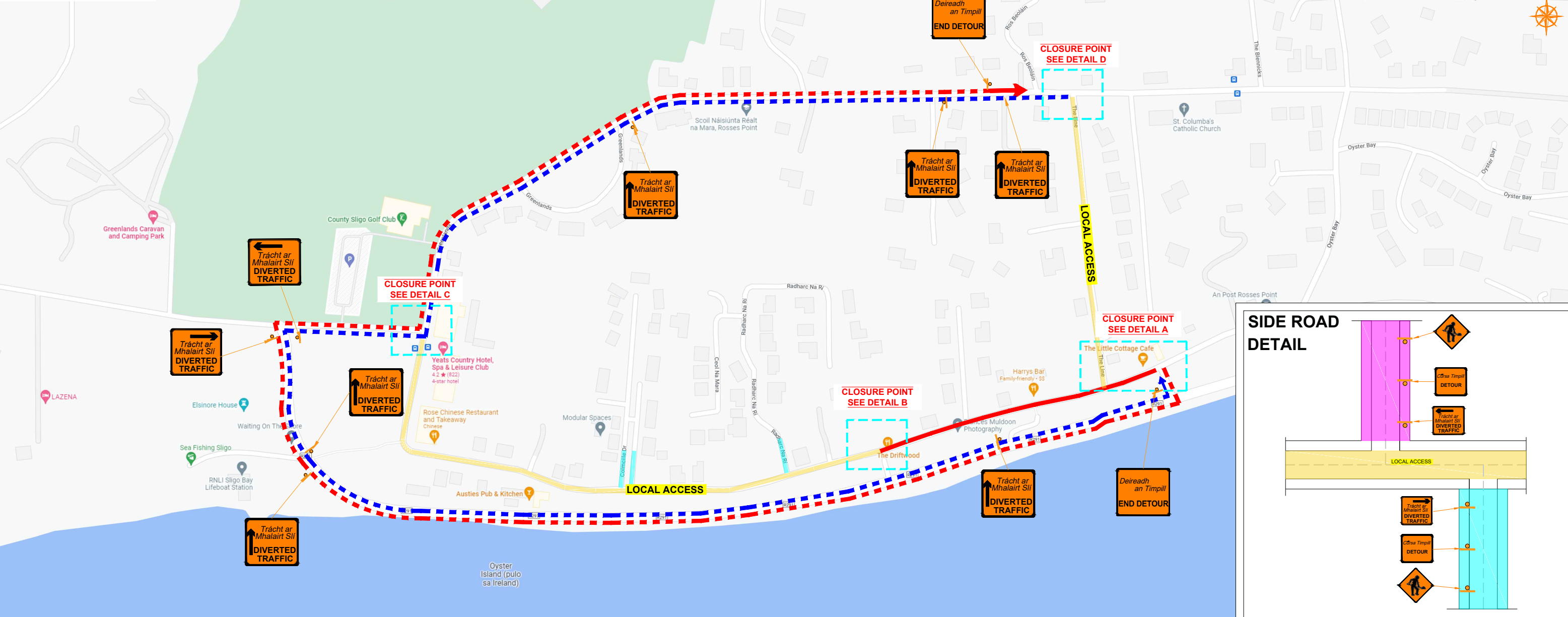


# DIVERSION ROUTE



**ROAD CONTROL**

Copyright Notes:  
This drawing is the property of Road Control Services Ltd. The design information contained herein is strictly confidential. This document is not to be used, reproduced, disclosed or circulated in whole or in part without prior written consent.

**CLIENT**

**DESIGN PARAMETERS**

Speed Limit	50 km/h	Sign size (diamond)	600mm
Road Classification	1(iii)	Sign size (circular)	600mm
Roadworks type	B	Minimum Cone size	750mm
Number of advance signs	2	Cone spacing at tapers	3m
Sign visibility	50m	Cone spacing longitudinal	3m
Distance between signs	20m	Lateral Safety Zone	0.5m
Taper at lane	N/A	Longitudinal Safety Zone	5m
Taper at hard shoulder	N/A	Minimum lane width	3.0m

**LEGEND**

- Local Access
- Works in Place
- Traffic sign
- Traffic cones
- Diversion Route A
- Diversion Route B

**GENERAL NOTES**

- All information contained in this drawing (including digital data) should be checked and verified prior to any stage of construction;
- All works are to be carried out in accordance with local authority requirements and are to be included in the site-specific safety & health plan;
- Site inspections and maintenance of the traffic management layout is to be agreed with local authority to ensure the safety and integrity of the design;
- Contractor to carry out a site risk assessment prior to the installation of any traffic management plan to ensure that conditions reflect those considered for design post submission;
- Contractor shall be responsible for the provision of ramp access at any change in road surface level where traffic runs on a temporary surface, and for pedestrian/cycle ramps where footpath/cycle-ways have a level discontinuity as per result of the works.

Rev	Date	Details	Drm	Chk	App	Drm	BC

**Project**

**ROSSES POINT VILLAGE CATCHMENT A**

**Title**

**TRAFFIC MANAGEMENT PLAN PHASE 2 ROAD CLOSURE**

**Stage**

**CONSTRUCTION**

Drawing No C22063\_01\_005 Rev 0