

Climate Action Regional Office
Climate Ready Sligo
SEA Screening Report

Ref/1

Draft 1 | 14 May 2019

Draft

This report takes into account the particular instructions and requirements of our client.

It is not intended for and should not be relied upon by any third party and no responsibility is undertaken to any third party.

Job number 267753-00

Ove Arup & Partners Ireland Ltd

Arup
50 Ringsend Road
Dublin 4
D04 T6X0
Ireland
www.arup.com

ARUP

Document verification

ARUP

Job title		Climate Ready Sligo		Job number 267753-00	
Document title		SEA Screening Report		File reference	
Document ref		Ref/1			
Revision	Date	Filename	Draft 1_SEA Screening_Sligo Climate Change Adaptation Strategy.docx		
Draft 1	18 Apr 2019	Description	First draft		
			Prepared by	Checked by	Approved by
		Name	Ailsa Doyle	Sinead Whyte	Paula Kirk
		Signature			
Issue	30 Apr 2019	Filename	SEA Screening_Sligo Climate Change Adaptation Strategy_ISSUE.docx		
		Description	Issue		
			Prepared by	Checked by	Approved by
		Name	Ailsa Doyle	Sinead Whyte	Paula Kirk
		Signature			
Draft 1	14 May 2019	Filename	SEA Screening_Sligo_Climate Change Adaptation Strategy_Draft_1.docx		
		Description	Draft for issue		
			Prepared by	Checked by	Approved by
		Name	Ailsa Doyle	Sinead Whyte	Paula Kirk
		Signature			
		Filename			
		Description			
			Prepared by	Checked by	Approved by
		Name			
		Signature			
<p align="center">Issue Document verification with document</p> <div style="text-align: right;"> <input checked="" type="checkbox"/> </div>					

Contents

	Page
1 Introduction	1
2 Strategic Environmental Assessment	2
3 Guidance and Legislation	3
3.1 Legislative Overview	3
3.2 Guidance Documents	4
4 The Draft Adaptation Strategy	5
4.1 Overview	5
5 SEA Screening Methodology	6
5.1 Overview	6
5.2 Task 1.1 SEA -Pre-Screening Checkø	6
5.3 Task 1.2 SEA Screening	7
6 SEA Screening	10
6.1 Task 1.1 SEA -Pre-Screening Checkø	10
6.2 Task 1.2 Significance Criteria Assessment	14
7 Conclusion	20

Appendices

Appendix A

Task 1.2 Assessment of Adaptation Actions

1 Introduction

Under the requirements of the *Climate Action and Low Carbon Development Act 2015* Sligo County Council have prepared *Climate Ready Sligo* - the Draft Climate Change Adaptation Strategy for County Sligo, for the period 2019-2024 (hereafter referred to as the Draft Adaptation Strategy) which sets out strategic priorities, measures and responses for adaptation in County Sligo over the next five years.

Arup has been commissioned by Sligo County Council to prepare a report for the purposes of Strategic Environmental Assessment (SEA) Screening of the Draft Adaptation Strategy.

SEA screening is defined as *“the process for deciding whether a particular plan, other than those for which SEA is mandatory, would be likely to have significant environmental effects, and would thus warrant SEA.”*

The purpose of this document is to carry out a screening exercise to determine, in respect of the Draft Adaptation Strategy, if SEA is required to be carried out in accordance with the European Directive 2001/42/EC on the assessment of the effects of certain plans and programmes on the environment (‘SEA Directive’) as transposed by the European Communities (Environmental Assessment of Certain Plans and Programmes) Regulations 2004 (S.I. 435 of 2004), as amended.

This Draft SEA Screening Report provides the findings of the SEA screening process for the Draft Adaptation Strategy.

2 Strategic Environmental Assessment

Strategic Environmental Assessment (SEA) is *the formal, systematic evaluation of the likely significant environmental effects of implementing a plan or programme before a decision is made to adopt that plan or programme* (Department of the Environment, Community and Local Government, 2004).

The SEA process is comprised of the following steps:

- Screening: Decision on whether or not SEA of a Plan or Programme is required. This is the current stage of the SEA process to which this report relates.
- Scoping: Consultation with the defined statutory bodies on the scope and level of detail to be considered in the assessment.
- Environmental Assessment: An assessment of the likely significant impacts on the environment as a result of the Plan or Programme.
- Preparation of an Environmental Report.
- Consultation on the Plan or Programme and associated Environmental Report.
- Evaluation of the submissions and observations made on the Plan or Programme and Environmental Report; and
- Issuance of a SEA Statement identifying how environmental considerations and consultation have been integrated into the Final Plan or Programme.

SEA is intended to provide the framework for influencing decision-making at an earlier stage when plans and programmes - which give rise to individual projects - are being developed. SEA should result in more sustainable development through the systematic appraisal of policy options.

3 Guidance and Legislation

3.1 Legislative Overview

3.1.1 SEA Legislation

The SEA Directive - *Directive 2001/42/EC on the assessment of the effects of certain plans and programmes on the environment* - requires that an environmental assessment is carried out of certain plans and programmes which are likely to have significant effects on the environment.

The objective of the SEA Directive is *to provide for a high level of protection of the environment and to contribute to the integration of environmental considerations into the preparation and adoption of plans...with a view to promoting sustainable development*' (Article 1 SEA Directive 2001).

SEA is a systematic, on-going process for evaluation, at the earliest possible stage, of the environmental quality and consequences of implementing certain plans and programmes on the environment.

In Ireland, the SEA Directive has been transposed into national legislation through the following regulations:

- S.I. No. 435 of 2004 (European Communities (Environmental Assessment of Certain Plans and Programmes) Regulations 2004, as amended by S.I. No. 200 of 2011 (European Communities (Environmental Assessment of Certain Plans and Programmes) (Amendment) Regulations 2011).
- S.I. No. 436 of 2004 (Planning and Development (Strategic Environmental Assessment) Regulations 2004, as amended by S.I. No. 201 of 2011 (Planning and Development (Strategic Environmental Assessment) (Amendment) Regulations 2011).

3.1.2 Relevant Climate Legislation

The following policy and legislation were also reviewed in the preparation of this SEA Screening Report.

- An EU Strategy on Adaptation to Climate Change (European Commission, 2013).
- Paris Agreement (United Nations, 2015).
- Climate Action and Low Carbon Development Act 2015 (Government of Ireland, 2015).
- National Mitigation Plan (Government of Ireland, 2017).
- National Climate Change Adaptation Plan (Department of Communications, Climate Action and the Environment, 2018).

- Project Ireland 2040: National Planning Framework (Government of Ireland, 2018).

3.2 Guidance Documents

A number of national guidance documents on SEA were reviewed in the preparation of this SEA Screening Report, including:

- *Development of Strategic Environmental Assessment (SEA) Methodologies for Plans and Programmes in Ireland* (EPA, 2013).
- *Implementation of SEA Directive (2001/42/EC): Assessment of the Effects of Certain Plans and Programmes on the Environment- Guidelines for Regional Authorities and Planning Authorities* (Department of the Environment, Community and Local Government, 2004).
- *Local Authority Adaptation Strategy Development Guidelines December 2018* (Department of Communications, Climate Action and the Environment, 2018).

4 The Draft Adaptation Strategy

4.1 Overview

The Draft Adaptation Strategy sets out the strategic priorities, measures and responses of Sligo County Council for adaptation in County Sligo over the next five years, as required by the Climate Action and Low Carbon Development Act 2015.

While the Draft Adaptation Strategy recognises and builds on adaptation action already underway, it also lays the groundwork for a new, integrated approach to adaptation under the National Adaptation Framework. Further, it requires climate change principles and objectives to be considered in all of Sligo County Council's policies and programs.

The aim of the Draft Adaptation Strategy is to identify the risks, challenges and opportunities that need to be considered, and to take a coherent coordinated action in response. The Council's Vision of a Climate Ready Sligo is to achieve:

“A Climate Ready Sligo is a County that plans for the impacts of climate change, increases resilience through appropriate adaptation measures and embraces opportunities for sustainable development.”

In order to achieve this vision, Sligo County Council has established three strategic Goals, and a range of Objectives which provide an overarching framework for climate adaptation planning in Sligo:

Goal 1- Ensure adequate relevant information on Climate Change & Sustainability is made available for anyone who has concerns about related issues

Goal 2- Increase the resilience of the Built and Natural Environment to Climate Change by planning and implementing appropriate adaptation measures

Goal 3- To ensure that Sligo County Council is adequately prepared for the projected impacts of Climate Change in the future.

As a next step, the Draft Adaptation Strategy identifies a number of Objectives which define strategies or implementation steps to attain the identified Goals. The Objectives identified are common to each of the strategic Goals and constitute one or more of the following: engage, plan or adapt:

Engage- Improve education, awareness raising and capacity on climate change, adaptation (and mitigation), impact reduction and early warning across the Local Authority departments, businesses, communities and individuals.

Plan- Integrate climate change measures into policies, strategies and planning, as well as the identification of areas at risk to inform planning and decision - making.

Adapt- Strengthen resilience and adaptive capacity and develop and implement co-ordinated responses to climate risk where needed.

Further to the identification of the strategic Goals and Objectives, SCC has established a range of specific Actions. These 'Adaptation Actions' will be developed and implemented by SCC, with priority awarded to actions where severe weather has impacted the safety of citizens and critical infrastructure. The proposed Adaptation Actions are included in **Appendix A**.

Figure 4.1 illustrates the steps that makes up the Draft Adaptation Strategy



Figure 4.1 The Draft Adaptation Strategy

5 SEA Screening Methodology

5.1 Overview

This SEA screening assessment was carried out having due regard to the legislation and guidance outlined in Section 3 of this report.

The EPA Synthesis Report 'Development of Strategic Environmental Assessment (SEA) Methodologies for Plans and Programmes in Ireland' sets out a series of procedural tasks to consider when carrying out SEA Screening of plans and programmes.

The report states that the overall characteristics of the plan or programme should first be considered, by means of a 'pre-screening check' to see if it falls within the requirements of the SEA Directive (Task 1.1). Should this 'pre-screening check' determine that the plan or programme is of a type that falls within the requirements of the SEA Directive, the potential environmental significance of implementing the proposed plan or programme should then be considered, against the significance criteria outlined in Annex II (2) of the SEA Directive (Task 1.2).

5.2 Task 1.1 SEA 'Pre-Screening Check'

The EPA Synthesis Report 'Development of Strategic Environmental Assessment (SEA) Methodologies for Plans and Programmes in Ireland' provides a

decision-tree or flowchart, which simplifies the complex wording of the SEA Directive into a systematic and logical series of questions.

This flowchart allows for rapid screening-out of those plans and programmes that are not likely to have any environmental impact and screening-in of those that definitely do require SEA. This task ultimately determines the requirement for SEA, under the SEA Directive.

The EPA flowchart is illustrated in **Figure 5.1** and makes up Task 1.1 of the SEA Screening methodology.

5.3 Task 1.2 SEA Screening

Task 1.2 of the SEA Screening methodology constitutes environmental significance screening, which may be undertaken to assess whether a plan or programme is likely to result in significant environmental effects and should therefore, be taken forward for SEA. Annex II of the SEA Directive sets out the statutory criteria that should be addressed when undertaking Task 1.2.

Annex II of the SEA Directive is transposed into national legislation as Schedule 1 *‘Criteria for determining whether a Plan or Programme (or Modification thereto) is likely to have significant effects on the Environment’* of the European Communities (Environmental Assessment of Certain Plans and Programmes) Regulations 2004, as amended.

Thus, Task 1.2 of the SEA Screening methodology involves an assessment of the plan or programme against the significance criteria set out in Annex II of the SEA Directive and Schedule 1 of the European Communities (Environmental Assessment of Certain Plans and Programmes) Regulations 2004, as amended in order to determine if the plan or programme should be subject to full SEA.

The Significance Criteria and sub-criteria are outlined below, each of which constitutes a heading under which the Draft Adaptation Strategy is assessed and discussed in Section 6.2 of this Screening Report. *“Criteria for determining whether a Plan or Programme (or Modification thereto) is likely to have significant effects on the Environment.*

1. *The characteristics of the plan or programme, or modification to a plan or programme, having regard, in particular, to*
 - *the degree to which the plan or programme, or modification to a plan or programme, sets a framework for projects and other activities, either with regard to the location, nature, size and operating conditions or by allocating resources;*
 - *the degree to which the plan or programme, or modification to a plan or programme, influences other plans including those in a hierarchy;*
 - *the relevance of the plan or programme, or modification to a plan or programme, for the integration of environmental considerations in particular with a view to promoting sustainable development;*

- *environmental problems relevant to the plan or programme, or modification to a plan or programme;*
 - *the relevance of the plan or programme, or modification to a plan or programme, for the implementation of European Union legislation on the environment (e.g. plans and programmes linked to waste management or water protection).*
2. *Characteristics of the effects and of the area likely to be affected, having regard, in particular, to*
- *the probability, duration, frequency and reversibility of the effects;*
 - *the cumulative nature of the effects;*
 - *the transboundary nature of the effects;*
 - *the risks to human health or the environment (e.g. due to accidents);*
 - *the magnitude and spatial extent of the effects (geographical area and size of the population likely to be affected);*
 - *the value and vulnerability of the area likely to be affected due to:*
 - a) special natural characteristics or cultural heritage;*
 - b) exceeded environmental quality standards or limit values;*
 - c) intensive land-use.*
 - *the effects on areas or landscapes which have a recognised national, European Union or international protection status.”*

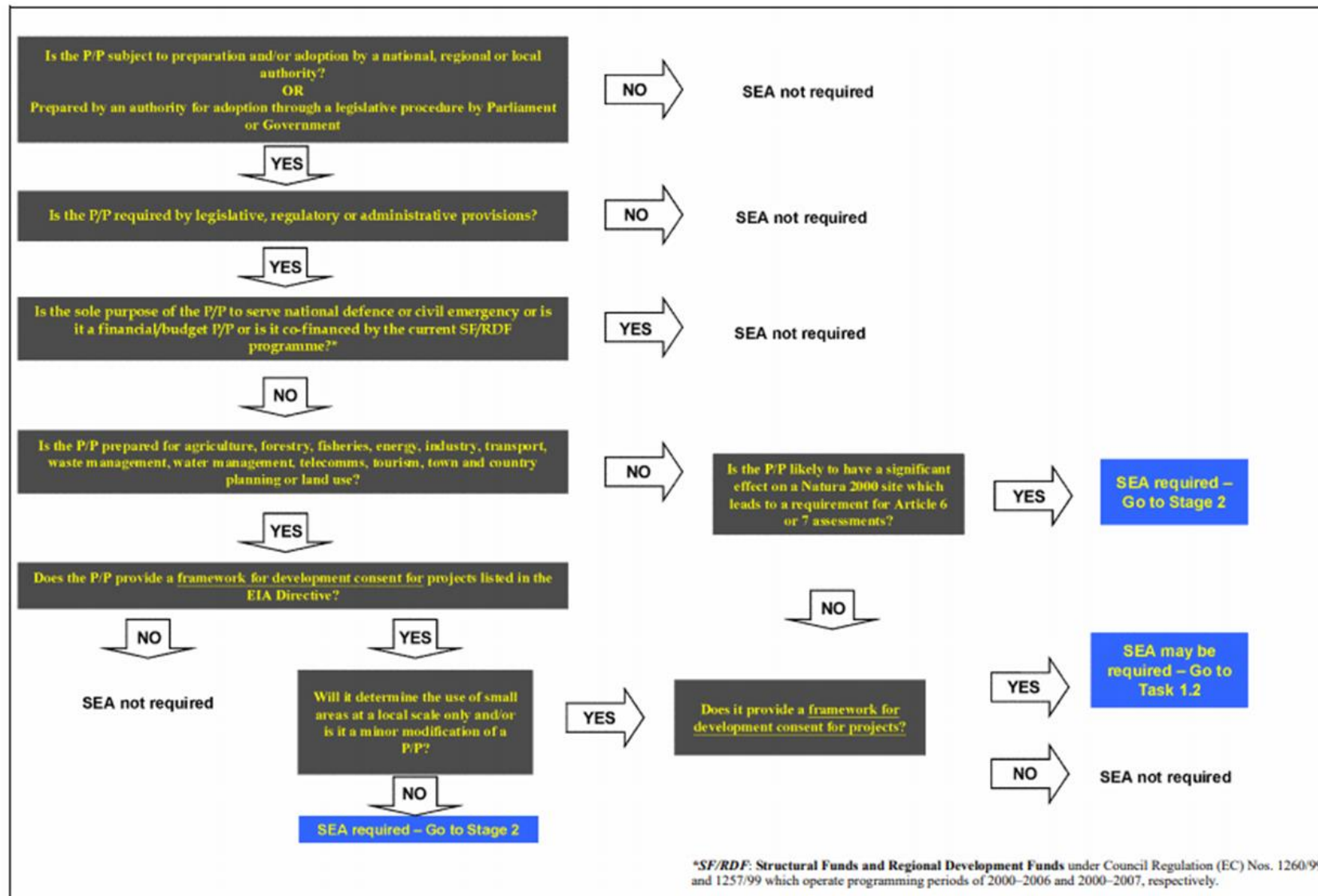


Figure 5.1 Stage 1 Pre-Screening 'Check'- Flowchart (EPA, 2013)

6 SEA Screening

6.1 Task 1.1 SEA ‘Pre-Screening Check’

6.1.1 Application of the EPA ‘Pre-Screening Flowchart’

As outlined in Section 5.2, Task 1.1 of the SEA Screening methodology constitutes the use of the ‘decision-tree’ or flowchart provided in the EPA Synthesis Report ‘Development of Strategic Environmental Assessment (SEA) Methodologies for Plans and Programmes in Ireland’.

The Draft Adaptation Strategy was assessed using this ‘pre-screening’ flowchart, the application and outcome of which is illustrated in the replicated flowchart in **Figure 6.1** and discussed in Section 6.1.2.

6.1.2 Outcome of ‘Pre-Screening Check’- Requirement for SEA

As previously described, the Draft Adaptation Strategy was assessed using the EPA ‘decision-tree’ or flowchart in order to ascertain the requirement for SEA. The outcome of the EPA flowchart is described hereafter and illustrated in the replicated flowchart in **Figure 6.1**.

Article 2(3) of S.I No. 435, transposing Article 2(a) of the SEA Directive, defines plans and programmes as those:

“(a) which are subject to preparation and/or adoption by an authority at national, regional or local level or which are prepared by an authority for adoption, through a legislative procedure by Parliament or Government, and

(b) which are required by legislative, regulatory or administrative provisions.”

Sligo County Council are currently preparing the Draft Adaptation Strategy under the requirements of the *Climate Action and Low Carbon Development Act 2015*. The Draft Adaptation Strategy is therefore considered to constitute *a plan*, as defined by S.I No 435, and the SEA Directive.

Article 9(1) of S.I No. 435, transposing Article 3(2)(a) of the SEA Directive, sets out the requirement to carry out environmental assessment for all plans or programmes:

“(a) which are prepared for agriculture, forestry, fisheries, energy, industry, transport, waste management, water management, telecommunications and tourism, and which set the framework for future development consent of projects listed in Annexes I and II to the Environmental Impact Assessment Directive, or

(b) which are not directly connected with or necessary to the management of a European site but, either individually or in combination with other plans, are likely to have a significant effect on any such site.”

The Draft Adaptation Strategy is not considered to constitute a plan or programme referred to in sub-article (1) in that it is not being specifically prepared for any of the sectors referred and is not considered to be directly connected with or necessary to the management of a European site.

Article 9(3) and 9(4) of S.I No. 435, transposing Article 3(4) and 3(5) of the SEA Directive goes on to state that;

“(3) A competent authority shall determine whether plans and programmes other than those referred to in sub-article (1), which set the framework for future development consent of projects, are likely to have significant effects on the environment.

(4) A competent authority shall, in determining on a case by-case basis under sub-article (2) or (3) whether a plan or programme, or modification to a plan or programme, would or would not be likely to have significant effects on the environment, take account of relevant criteria set out in Schedule 1 and any submission or observation received in response to a notice under sub-article (5).”

Thus, while it is already established that the Draft Adaptation Strategy is not considered to constitute a plan or programme referred to in Article 9(1) of S.I No. 435, in that it is not being specifically prepared for any of the sectors referred, it is further required to determine whether the Draft Adaptation Strategy could be considered, in isolation, as having the potential to set framework for development consent of projects.

In considering the potential of the Draft Adaptation Strategy to set a framework for future development consent of projects, the interpretation of the term ‘framework for developmental consent’ is referred, as set out in the EPA report ‘Development of Strategic Environmental Assessment (SEA) Methodologies for Plans and Programmes in Ireland’. The EPA report states that: ‘A framework for future development consent can be interpreted to mean measures that identify circumstances under which development will be encouraged or allowed or brings forward programmes that identify certain types of development to be pursued in a particular sector e.g. wind energy within an Energy Plan/Programme.’

As outlined in the Draft Adaptation Strategy it is an objective of the Council *to integrate climate change measures into policies, strategies and planning, as well as the identification of areas at risk to inform planning and decision-making.*

Some of the measures, or *Actions* put forward in the Draft Adaptation Strategy could be considered to set a framework for development consent, in that they identify circumstances under which development will be encouraged. For example, Action No 10. of Goal 3 of the Draft Adaptation Strategy is to:

‘Encourage and promote projects/businesses that will contribute positively and grow the Circular and Bio-economy to promote sustainable rural and urban economic development as part of the overall aim of transiting to a low carbon economy.’

Thus, while the Draft Adaptation Strategy is not considered to fall under any of the sectors which would require mandatory environmental assessment under Article 9(1) of S.I No. 435, it is considered that the Draft Adaptation Strategy has

the potential, to some degree, to set a framework for the future development consent of projects, in accordance with the EPA interpretation of the same.¹

It is therefore determined that the Draft Climate Adaptation Strategy could be considered to fall within the requirements of S.I No 435 and the SEA Directive and should therefore be subject to Task 1.2 of the SEA screening process; consideration of the Draft Adaptation Strategy against statutory significant criteria.

The findings of this pre-screening check are summarised in **Figure 6.1**, using the EPA decision-tree or flowchart.

Draft

¹ As set out in the EPA report 'Development of Strategic Environmental Assessment (SEA) Methodologies for Plans and Programmes in Ireland'.

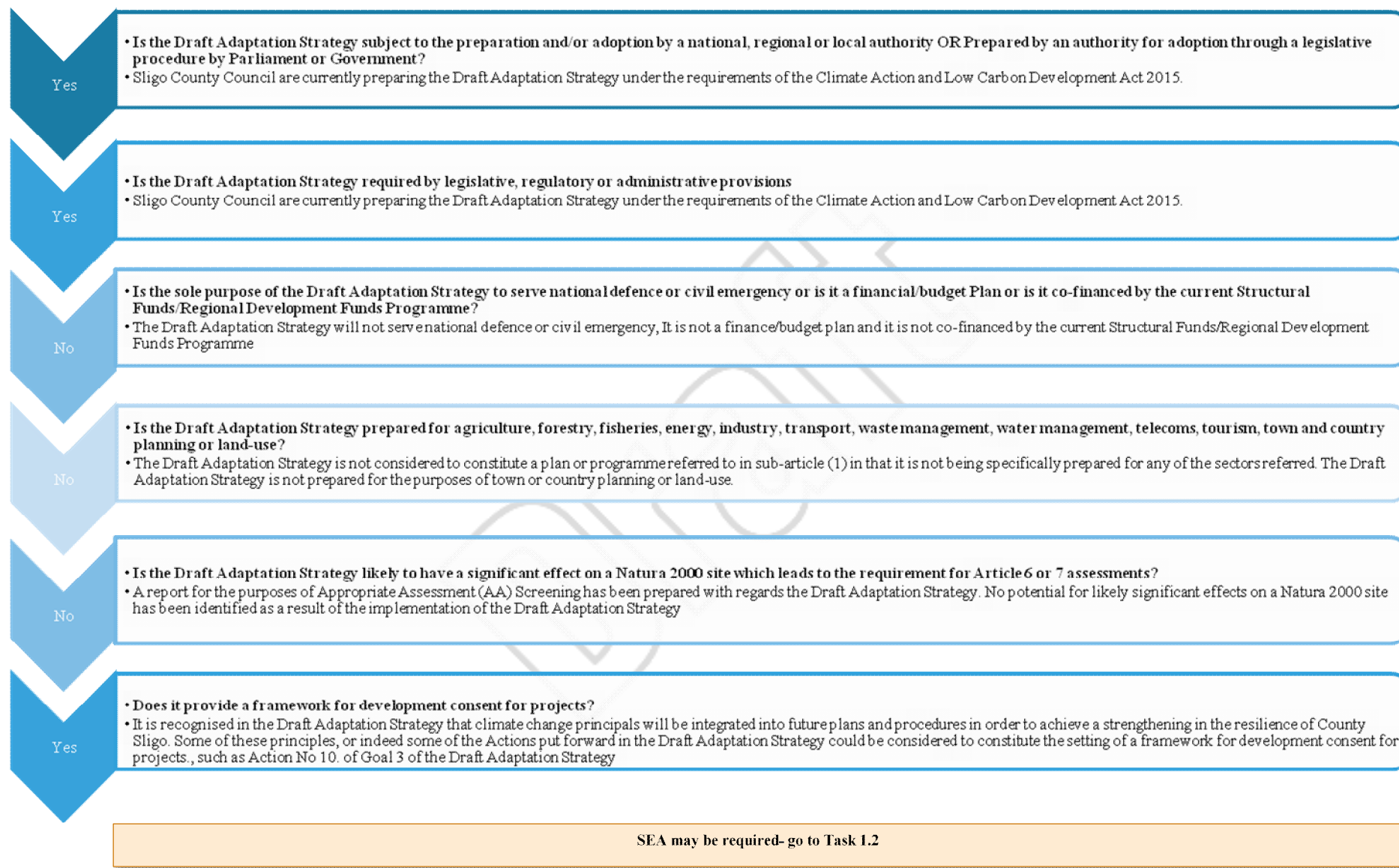


Figure 6.1 Application of EPA ‘Decision -Tree’

6.2 Task 1.2 Significance Criteria Assessment

As outlined in Section 5.3, Task 1.2 of the SEA Screening methodology involves an assessment of the plan or programme against the ‘Significance Criteria’ and sub-criteria set out in Annex II of the SEA Directive and Schedule 1 of the European Communities (Environmental Assessment of Certain Plans and Programmes) Regulations 2004, as amended, in order to determine if the plan or programme should be subject to full SEA.

The assessment headings and sub-headings below are representative of each of these Significance Criteria and sub-criteria. In order to adequately assess and describe the ‘characteristics of the effects and of the area likely to be affected’ relevant to the Draft Adaptation Strategy, each of the proposed Adaptation Actions were reviewed against the sub-headings of this Significance Criteria. This detailed assessment of the Adaptation Actions is included in **Appendix A**.

This section provides an overview of the assessment of the Draft Adaptation Strategy, and the Adaptation Actions contained therein.

1. The characteristics of the plan or programme, or modification to a plan or programme, having regard, in particular, to

— the degree to which the Draft Adaptation Strategy sets a framework for projects and other activities, either with regard to the location, nature, size and operating conditions or by allocating resources,

In considering the potential of the Draft Adaptation Strategy to set a framework for projects and other activities, the interpretation of the term ‘framework for developmental consent’ is referred, as set out in the EPA report ‘Development of Strategic Environmental Assessment (SEA) Methodologies for Plans and Programmes in Ireland’. The EPA report states that: ‘A framework for future development consent can be interpreted to mean measures that identify circumstances under which development will be encouraged or allowed or brings forward programmes that identify certain types of development to be pursued in a particular sector e.g. wind energy within an Energy Plan/Programme.’

As outlined in the Draft Adaptation Strategy it is an objective of the Council ‘to integrate climate change measures into policies, strategies and planning, as well as the identification of areas at risk to inform planning and decision-making.’

Some of the measures, or *Actions* put forward in the Draft Adaptation Strategy could be considered to set a framework for projects and other activities, in accordance with the EPA interpretation, in that they identify circumstances under which development will be encouraged. For example, Action No 10. of Goal 3 of the Draft Adaptation Strategy is to:

‘Encourage and promote projects/businesses that will contribute positively and grow the Circular and Bio-economy to promote sustainable rural and urban economic development as part of the overall aim of transiting to a low carbon economy.’

While it is therefore recognised that the Draft Adaptation Strategy has the potential to set a framework for projects and other activities, it should also be considered in the context of the Irish strategic planning hierarchy.

The Sligo County Development Plan is defined as *“a spatial planning framework designed to support the economic and social development of the County.”*

The objectives and actions of the Draft Adaptation Strategy will be adopted and implemented under the Sligo County Development Plan, and any subsequent Local Areas Plans, as relevant. This is affirmed by Action No 1. of Goal 2 of the Draft Adaptation Strategy, which set out the intention of the Council to *“Ensure that prominence of Climate Change is maintained within the CDP and ensure all CC related actions in CDP are followed through and achieved”*

Thus, while it is recognised that the Draft Adaptation Strategy has the potential to set a framework for projects and other activities, the degree to which it does so, in isolation, is not considered to be significant, when reviewed in the context of the hierarchy of national, regional and local plans in which it sits, and the relevant policy which underpins the Irish planning process.

— the degree to which the Draft Adaptation Strategy influences other plans including those in a hierarchy,

As previously discussed, the objectives and actions of the Draft Adaptation Strategy will be adopted and implemented under the Sligo County Development Plan, and any subsequent Local Areas Plans, as relevant. This is affirmed by Action No 1. of Goal 2 of the Draft Adaptation Strategy, which set out the intention of the Council to *“Ensure that prominence of Climate Change is maintained within the CDP and ensure all CC related actions in CDP are followed through and achieved.”*

It is therefore considered that the Draft Adaptation Strategy does have the potential to influence other plans and programmes, specifically those in the strategic planning hierarchy.

However, in the identification of the influencing potential of the Draft Adaptation Strategy, it is important to note the purpose of the Strategy, which is ultimately to reduce the risk of the effects of climate change in County Sligo.

Thus, while the Draft Adaptation Strategy will, to some degree, influence other plans and programmes in a hierarchy, the influencing potential of the Draft Adaptation Strategy is likely to result in an overall positive effect on the environment.

It could also be considered that the Draft Adaptation Strategy will influence, and be influenced by, the twelve sectoral adaptation plans which are being prepared under the National Adaptation Framework, which have been further grouped into four key thematic areas:

- Critical Infrastructure and Buildings;
- Natural and Cultural Capital;
- Water Resources and Flood Risk Management;

- Public Health.

The Draft Adaptation Strategy has adopted the thematic areas of the sectoral adaptation plans to facilitate potential synergies and efficiencies that can be achieved in bringing forward coherence between sectoral adaptation policies and measures.

— **the relevance of the Draft Adaptation Strategy for the integration of environmental considerations in particular with a view to promoting sustainable development,**

As outlined in the Draft Adaptation Strategy, climate change presents the single biggest threat to sustainable development. Urgent action to halt climate change and deal with its impacts is integral to the successful implementation of the United Nations (UN) Sustainable Development Goals (SDGs). Goal 13 of the SDGs relates to climate change mitigation and adaptation:

Goal 13: Take urgent action to combat climate change and its impacts, focuses on the integration of climate change measures into national policies, the improvement of education, awareness-raising and institutional capacity on climate change mitigation, adaptation, impact reduction and early warnings.

It is considered that the Draft Adaptation Plan aligns with Goal 13 of the UNs SDGs by setting out strategic priorities, measures and responses for climate adaptation in County Sligo over the period 2019-2024.

The Draft Adaptation Plan also requires climate change principles and objectives to be considered in all of Sligo County Councils policies and programs. In doing so, the plan will provide an opportunity to not only enhance the adaptive capacity and resiliency of Sligo, but also reduce the long term costs and impacts associated with climate change.

The Draft Adaptation Strategy is therefore considered to significantly promote sustainable development in County Sligo.

— **environmental problems relevant to the Draft Adaptation Strategy,**

The environmental problem of relevance to the Draft Adaptation Strategy is that of climate change.

The purpose of the Draft Adaptation Strategy is to assist Sligo County Council in preparing for the environmental problem of climate change through climate adaptation; developing a comprehensive understanding of how a changing climate will affect the County and its communities; and actively working to reduce exposure to new and increased risks.

By taking proactive action to adjust and prepare for anticipated changes, Sligo County Council will work to achieve a “reduction in losses, improved environmental health, and provision of a host of community benefits.” Ultimately, the Draft Adaptation Plan will likely reduce the risk to County Sligo from climate change and its associated impacts.

— **the relevance of the Draft Adaptation Strategy for the implementation of European Union legislation on the environment (e.g. plans and programmes linked to waste management or water protection).**

A key driver for the development of the Draft Adaptation Strategy is the need to respond to international, European, and national climate change action through a wide range of agreements, directives, legislation and regulations.

The Draft Adaptation Strategy is being prepared by Sligo County Council under the requirements of the *Climate Action and Low Carbon Development Act 2015*. It is consistent with the implementation of European Union legislation on climate change including the EU Strategy on Adaptation to Climate Change (EC, 2013).

2. Characteristics of the effects and of the area likely to be affected, having regard, in particular, to

— **the probability, duration, frequency and reversibility of the effects,**

The purpose of the Draft Adaptation Strategy is to assist Sligo County Council in preparing for climate change through climate adaptation; developing a comprehensive understanding of how a changing climate will affect the County and its communities; and actively working to reduce exposure to new and increased risks.

By taking proactive action to adjust and prepare for anticipated changes, Sligo County Council will work to achieve a reduction in losses, improved environmental health, and provision of a host of community benefits.

Ultimately, the Draft Adaptation Plan will work to reduce the risk to County Sligo of the effects of climate change. An overall likely positive, long-term effect on the environment is therefore identified.

— **the cumulative nature of the effects,**

In accordance with the National Adaptation Strategy, each Local Authority (LA) is required to make and adopt Local Adaptation Strategies. Further, seven Government Departments/Agencies have been identified with responsibility for twelve priority sectors which are required to prepare sectoral adaptation plans.

Where enhanced resilience to climate change is achieved in each of these LA areas or Sectors, a potential cumulative effect is identified with regards climate adaptation at a national level. The nature of this potential cumulative effect is predicted to be long-term and positive.

— **the transboundary nature of the effects,**

Sligo County Council's Climate Change Adaptation Strategy 2019-2024 sets out the strategic priorities, measures and responses for adaptation in County Sligo over the next five years, as required by the *Climate Action and Low Carbon Development Act 2015*.

As the Draft Adaptation Strategy is focused on climate adaptation within Country Sligo, the effects of the implementation of the same are predicted to arise mainly within the County.

However, as indicated in the detailed assessment of the proposed Adaptation Actions in **Appendix A**, the Draft Adaptation Strategy could be considered to give rise to some potential (positive) transboundary effects. This is particularly relevant where actions are proposed with regards to natural features or infrastructure networks that may be common to one or more county, or administrative area. This includes actions relevant to the flood risk management of surface water bodies, protection and conservation of water resources, and biodiversity management, including species spatial responses and restoration of natural systems. It is further recognised that actions relating to knowledge sharing also have the potential to result in (positive) transboundary effects, where other administrative areas might benefit from the information gained, or lessons learned arising from the implementation of the Draft Adaptation Strategy and its Adaptation Actions.

— **the risks to human health or the environment (e.g. due to accidents),**

Successful implementation of the Draft Adaptation Strategy is likely to result in an overall reduced risk to human health and the environment from the effects of climate change.

As outlined in the Draft Strategy, by taking proactive action to adjust and prepare for anticipated changes, Sligo County Council will work to achieve a reduction in losses, improved environmental health, and provision of a host of community benefits.

— **the magnitude and spatial extent of the effects (geographical area and size of the population likely to be affected),**

Sligo County Council's Climate Change Adaptation Strategy 2019 – 2024 sets out the strategic priorities, measures and responses for adaptation in County Sligo over the next five years, as required by the *Climate Action and Low Carbon Development Act 2015*.

As the Draft Adaptation Strategy is focused on climate adaptation within Country Sligo, the effects of the implementation of the same are likely to be restricted within the County, with limited potential for positive transboundary effects.

— **the value and vulnerability of the area likely to be affected due to:**

(a) special natural characteristics or cultural heritage,

No potential for significant negative effects on the natural or cultural heritage of County Sligo are predicted to result from the implementation of the Draft Adaptation Strategy.

Proposed development will be subject to EIA and AA at project level, as required.

(b) exceeded environmental quality standards or limit values,

No potential for exceedance of environmental quality standards or limit values are predicted to result from the implementation of the Draft Adaptation Strategy.

Proposed development will be subject to EIA and AA at project level, as required.

(c) intensive land-use,

The Draft Adaptation Strategy does not make provisions for or determine strategic land-use in Country Sligo.

— the effects on areas or landscapes which have a recognised national, European Union or international protection status.

A Report for the purposes of Appropriate Assessment (AA) Screening has been prepared with regards the Draft Adaptation Strategy. No potential for significant effects on any site of recognised national, community or international protection status has been identified.

Draft

7 Conclusion

The Draft Adaptation Strategy was assessed using the pre-screening flowchart, as provided in the EPA Synthesis Report *Development of Strategic Environmental Assessment (SEA) Methodologies for Plans and Programmes in Ireland*.

Following this assessment, it was concluded that the Draft Adaptation Strategy falls within the requirements of the SEA Directive in that it may set a framework for projects and other activities.

The Adaptation Actions proposed under the Draft Adaptation Strategy were subsequently screened against the significance criteria outlined in Annex II of the SEA Directive, to determine if the Strategy would give rise to likely significant environmental effects.

While the SEA Screening assessment recognises that the Draft Adaptation Strategy may set a framework for projects and other activities, the degree to which it does so is not considered to be significant, when considered in the context of the hierarchy of national, regional and local plans in which it sits, and the relevant policy which underpins the Irish planning process.

The Draft Adaptation Strategy was identified as having the potential, to some degree, to influence other plans and programmes, specifically those in the strategic planning hierarchy. However, in considering the purpose of the Draft Adaptation Strategy, which is ultimately to reduce the risk to County Sligo of the effects of climate change, the influencing potential of the Draft Adaptation Strategy is likely to result in an overall positive effect on the environment.

The successful implementation of the Draft Adaptation Strategy will likely significantly contribute to the promotion of sustainable development in County Sligo. It will also result in a likely reduction in risks to human health and the environment from climate change and its associated impacts.

The Draft Adaptation Strategy is being prepared by Sligo County Council under the requirements of the *Climate Action and Low Carbon Development Act 2015*. It is consistent with the implementation of European Union legislation on climate change including the EU Strategy on Adaptation to Climate Change (EC, 2013).

No likely significant negative effects on the value and vulnerability of County Sligo is predicted to result from the successful implementation of the Draft Adaptation Strategy. Further, no likely significant negative effects on any areas or landscapes which have a recognised national, Community or international protection status have been identified.

No requirement for SEA is therefore identified as a result of this SEA Screening assessment.

Appendix A

Task 1.2 Assessment of Adaptation Actions

Draft

	Characteristics of Potential Effects and Subject Area								
	Potential for significant effects: probability, duration, frequency and reversibility	Potential cumulative effects	Potential transboundary effects	Potential risks to human health or the environment	Magnitude and spatial extent of the effects	Potential effects on natural or cultural heritage of subject area	Potential for exceeded environmental quality standards or limit values of subject area	Potential for intensive land-use of subject area	Potential effects on protected areas
Goal 1: Develop in-house expertise & understanding about the impacts of Climate Change locally and to make sure that this information is made available									
Actively seek engagement during public consultation process and ensure that any relevant observations or amendments are included in final draft.	<p>This Action will successfully contribute to climate adaptation in County Sligo by increasing awareness of climate change and its associated impacts among the community and ensuring relevant observations/ are included in the final strategy.</p> <p>A potential positive effect on the population of Sligo is predicted as a result of enhanced climate adaptation.</p> <p>All County or Local Area Plans, and their relevant policies and objectives will be subject to SEA</p>	<p>In accordance with the National Adaptation Strategy, each LA is required to make and adopt local adaptation strategies. Further, seven Government Departments/ Agencies have been identified with responsibility for twelve priority sectors which are required to prepare sectoral adaptation plans.</p> <p>Where enhanced resilience to climate change is achieved in each of these LA areas or Sectors, a potential cumulative (positive) effect is identified with regards climate</p>	<p>No transboundary effects are predicted to result from the implementation of this Action.</p>	<p>Successful implementation of the Draft Adaptation Strategy is likely to result in an overall reduced risk to human health and the environment from the effects of climate change.</p> <p>All County or Local Area Plans, and their relevant policies and objectives will be subject to SEA and AA prior to adoption, as required.</p>	<p>This Action will affect the subject area of County Sligo, with potential for cumulative effects at a national level.</p>	<p>No potential effects on the natural or cultural heritage of County Sligo are predicted to result from the implementation of this Action.</p> <p>County or Local Area Plans, and their relevant policies and objectives will be subject to SEA and AA prior to adoption, as required.</p>	<p>No potential exceedance in environmental quality standards or limit values in County Sligo are predicted to result from the implementation of this Action.</p> <p>All County or Local Area Plans, and their relevant policies and objectives will be subject to SEA and AA prior to adoption.</p>	<p>No. This Action does not make provisions for or determine land-use within the subject area of County Sligo.</p> <p>All County or Local Area Plans, and their relevant policies and objectives will be subject to SEA and AA prior to adoption.</p>	<p>No potential effects on protected areas are predicted to result from the implementation of this Action- Refer to findings of Report for the Purposes of AA Screening.</p> <p>All County or Local Area Plans, and their relevant policies and objectives will be subject to SEA and AA prior to adoption.</p>

	Characteristics of Potential Effects and Subject Area								
	Potential for significant effects: probability, duration, frequency and reversibility	Potential cumulative effects	Potential transboundary effects	Potential risks to human health or the environment	Magnitude and spatial extent of the effects	Potential effects on natural or cultural heritage of subject area	Potential for exceeded environmental quality standards or limit values of subject area	Potential for intensive land-use of subject area	Potential effects on protected areas
	and AA prior to adoption. No significant negative environmental effects are predicted to result from the implementation of this Action.	adaptation at a national level.							
Engage with relevant agencies or groups to identify areas/communities potentially at risk from Climate Change	This Action will successfully contribute to climate adaptation in County Sligo by identifying those areas most at risk to climate change and ensuring contingency and adaptation planning is focused in these areas. A potential positive effect on the population of Sligo is predicted as a result of enhanced climate adaptation. No significant negative environmental effects are predicted to result from the implementation of	In accordance with the National Adaptation Strategy, each LA is required to make and adopt local adaptation strategies. Further, seven Government Departments/ Agencies have been identified with responsibility for twelve priority sectors which are required to prepare sectoral adaptation plans. Where enhanced resilience to climate change is achieved in each of these LA areas or Sectors, a potential cumulative (positive) effect is identified with	No transboundary effects are predicted to result from the implementation of this Action.	Successful implementation of the Draft Adaptation Strategy is likely to result in an overall reduced risk to human health and the environment from the effects of climate change.	This Action will affect the subject area of County Sligo, with potential for cumulative effects at a national level.	No potential effects on the natural or cultural heritage of County Sligo are predicted to result from the implementation of this Action.	No potential exceedance in environmental quality standards or limit values in County Sligo are predicted to result from the implementation of this Action.	No. This Action does not make provisions for or determine land-use within the subject area of County Sligo.	No potential effects on protected areas are predicted to result from the implementation of this Action- Refer to findings of Report for the Purposes of AA Screening.

	Characteristics of Potential Effects and Subject Area								
	Potential for significant effects: probability, duration, frequency and reversibility	Potential cumulative effects	Potential transboundary effects	Potential risks to human health or the environment	Magnitude and spatial extent of the effects	Potential effects on natural or cultural heritage of subject area	Potential for exceeded environmental quality standards or limit values of subject area	Potential for intensive land-use of subject area	Potential effects on protected areas
	this Action.	regards climate adaptation at a national level.							
Build and strengthen partnerships and promote cross-sectoral communication and cooperation in the implementation of Local Authority and Sectoral Adaptation Plans	<p>This Action will successfully contribute to climate adaptation in County Sligo by ensuring that the Adaptation Actions proposed under the Draft Adaptation Strategy are complementary and mutually reinforcing with those of other Local Authority Adaptation Plans and Sectoral Adaptation plans, thus avoiding conflicting outcomes.</p> <p>A potential positive effect on the population of Sligo is predicted as a result of enhanced climate adaptation.</p> <p>No significant negative environmental effects are predicted to result from the implementation of this Action.</p>	<p>In accordance with the National Adaptation Strategy, each LA is required to make and adopt local adaptation strategies. Further, seven Government Departments/ Agencies have been identified with responsibility for twelve priority sectors which are required to prepare sectoral adaptation plans.</p> <p>Where enhanced resilience to climate change is achieved in each of these LA areas or Sectors, a potential cumulative (positive) effect is identified with regards climate adaptation at a national level.</p>	A potential (positive) transboundary effect is predicted to result from the implementation of this Action through the Councils commitment to cross-sectional communication and cooperation with Government Departments/ Agencies in the delivery of Sectoral Adaptation Plans.	Successful implementation of the Draft Adaptation Strategy is likely to result in an overall reduced risk to human health and the environment from the effects of climate change.	This Action will affect the subject area of County Sligo, with potential for cumulative, transboundary effects at a national level.	No potential effects on the natural or cultural heritage of County Sligo are predicted to result from the implementation of this Action.	No potential exceedance in environmental quality standards or limit values in County Sligo are predicted to result from the implementation of this Action.	No. This Action does not make provisions for or determine land-use within the subject area of County Sligo.	No potential effects on protected areas are predicted to result from the implementation of this Action- Refer to findings of Report for the Purposes of AA Screening.

	Characteristics of Potential Effects and Subject Area								
	Potential for significant effects: probability, duration, frequency and reversibility	Potential cumulative effects	Potential transboundary effects	Potential risks to human health or the environment	Magnitude and spatial extent of the effects	Potential effects on natural or cultural heritage of subject area	Potential for exceeded environmental quality standards or limit values of subject area	Potential for intensive land-use of subject area	Potential effects on protected areas
Provide web-based resource to maintain the provision of up to date and relevant information on climate related issues	<p>This Action will successfully contribute to climate adaptation in County Sligo through increased community awareness of the risk and range of changes and their impacts.</p> <p>A potential positive effect on the population of Sligo is predicted as a result of enhanced climate adaptation</p> <p>No significant negative environmental effects are predicted to result from the implementation of this Action.</p>	<p>In accordance with the National Adaptation Strategy, each LA is required to make and adopt local adaptation strategies. Further, seven Government Departments/ Agencies have been identified with responsibility for twelve priority sectors which are required to prepare sectoral adaptation plans.</p> <p>Where enhanced resilience to climate change is achieved in each of these LA areas or Sectors, a potential cumulative (positive) effect is identified with regards climate adaptation at a national level.</p>	A potential (positive) transboundary effect is identified where information gained, or lessons learned are shared with other administrative areas.	Successful implementation of the Draft Adaptation Strategy is likely to result in an overall reduced risk to human health and the environment from the effects of climate change.	This Action will affect the subject area of County Sligo, with potential for cumulative and transboundary effects at a national level.	No potential effects on the natural or cultural heritage of County Sligo are predicted to result from the implementation of this Action.	No potential exceedance in environmental quality standards or limit values in County Sligo are predicted to result from the implementation of this Action.	No. This Action does not make provisions for or determine land-use within the subject area of County Sligo.	No potential effects on protected areas are predicted to result from the implementation of this Action- Refer to findings of Report for the Purposes of AA Screening.
Develop formal links with Sligo IT in relation to Climate Change (including energy & sustainability) matters. Utilise the academic resources available locally to maintain & update information resources that are made available to the public.	This Action will successfully contribute to climate adaptation in County Sligo through increased community awareness of the risk and range of	In accordance with the National Adaptation Strategy, each LA is required to make and adopt local adaptation strategies. Further, seven Government Departments/	A potential (positive) transboundary effect is identified where information gained, or lessons learned are shared with other administrative areas.	Successful implementation of the Draft Adaptation Strategy is likely to result in an overall reduced risk to human health and the environment from the effects of	This Action will affect the subject area of County Sligo, with potential for cumulative and transboundary effects at a national level.	No potential effects on the natural or cultural heritage of County Sligo are predicted to result from the implementation of this Action.	No potential exceedance in environmental quality standards or limit values in County Sligo are predicted to result from the implementation of	No. This Action does not make provisions for or determine land-use within the subject area of County Sligo.	No potential effects on protected areas are predicted to result from the implementation of this Action- Refer to findings of Report for the Purposes of AA Screening.

	Characteristics of Potential Effects and Subject Area								
	Potential for significant effects: probability, duration, frequency and reversibility	Potential cumulative effects	Potential transboundary effects	Potential risks to human health or the environment	Magnitude and spatial extent of the effects	Potential effects on natural or cultural heritage of subject area	Potential for exceeded environmental quality standards or limit values of subject area	Potential for intensive land-use of subject area	Potential effects on protected areas
	<p>changes and their impacts, availability of academic resources to aid climate change research and provision of information to the public.</p> <p>A potential positive effect on the population of Sligo is predicted as a result of enhanced climate adaptation</p> <p>No significant negative environmental effects are predicted to result from the implementation of this Action.</p>	<p>Agencies have been identified with responsibility for twelve priority sectors which are required to prepare sectoral adaptation plans.</p> <p>Where enhanced resilience to climate change is achieved in each of these LA areas or Sectors, a potential cumulative (positive) effect is identified with regards climate adaptation at a national level.</p>		climate change.			this Action.		
Liaise with Marine Institute/Dept of Marine about the installation/ maintenance of a sea level monitor in Sligo Bay.	<p>This Action will successfully contribute to climate adaptation in County Sligo by facilitating the identification of sea-level rise and the adoption of responsive actions or mitigation measures.</p> <p>A potential positive effect on land and</p>	<p>In accordance with the National Adaptation Strategy, each LA is required to make and adopt local adaptation strategies. Further, seven Government Departments/ Agencies have been identified with responsibility for twelve priority sectors which are</p>	<p>A potential (positive) transboundary effect is identified where increased knowledge and awareness of sea-level rise is achieved relevant to those other Counties along the Atlantic Seaboard.</p>	<p>Successful implementation of the Draft Adaptation Strategy is likely to result in an overall reduced risk to human health and the environment from the effects of climate change.</p>	<p>This Action will affect the subject area of County Sligo, with potential for cumulative effects at a national level.</p>	<p>No potential effects on the natural or cultural heritage of County Sligo are predicted to result from the implementation of this Action.</p>	<p>No potential exceedance in environmental quality standards or limit values in County Sligo are predicted to result from the implementation of this Action.</p>	<p>No. This Action does not make provisions for or determine land-use within the subject area of County Sligo.</p>	<p>No potential effects on protected areas are predicted to result from the implementation of this Action- Refer to findings of Report for the Purposes of AA Screening.</p>

	Characteristics of Potential Effects and Subject Area								
	Potential for significant effects: probability, duration, frequency and reversibility	Potential cumulative effects	Potential transboundary effects	Potential risks to human health or the environment	Magnitude and spatial extent of the effects	Potential effects on natural or cultural heritage of subject area	Potential for exceeded environmental quality standards or limit values of subject area	Potential for intensive land-use of subject area	Potential effects on protected areas
	<p>soil, biodiversity, population and human health and material assets is therefore identified.</p> <p>No significant negative environmental effects are predicted to result from the implementation of this Action.</p>	<p>required to prepare sectoral adaptation plans.</p> <p>Where enhanced resilience to climate change is achieved in each of these LA areas or Sectors, a potential cumulative (positive) effect is identified with regards climate adaptation at a national level.</p>							
Goal 2: Increase the resilience of the Built and Natural Environment to Climate Change by planning and implementing appropriate adaptation measures									
Ensure that prominence of Climate Change is maintained within the CDP and ensure all CC related actions in CDP are followed through and achieved (See CDP CC related policies in Appendix 1.2)	<p>This Action will successfully contribute to climate adaptation in County Sligo by ensuring that the Adaptation Actions are implemented at local level, through the Irish Planning system.</p> <p>A potential positive effect on the population of Sligo is predicted as a result of enhanced climate adaptation.</p> <p>All County or Local Area Plans, and their relevant policies and</p>	<p>In accordance with the National Adaptation Strategy, each LA is required to make and adopt local adaptation strategies. Further, seven Government Departments/ Agencies have been identified with responsibility for twelve priority sectors which are required to prepare sectoral adaptation plans.</p> <p>Where enhanced resilience to climate change is achieved in each of these LA</p>	No transboundary effects are predicted to result from the implementation of this Action.	<p>Successful implementation of the Draft Adaptation Strategy is likely to result in an overall reduced risk to human health and the environment from the effects of climate change.</p> <p>All County or Local Area Plans, and their relevant policies and objectives will be subject to SEA and AA prior to adoption, as required.</p>	This Action will affect the subject area of County Sligo, with potential for cumulative effects at a national level.	<p>No potential effects on the natural or cultural heritage of County Sligo are predicted to result from the implementation of this Action.</p> <p>County or Local Area Plans, and their relevant policies and objectives will be subject to SEA and AA prior to adoption, as required.</p>	<p>No potential exceedance in environmental quality standards or limit values in County Sligo are predicted to result from the implementation of this Action.</p> <p>All County or Local Area Plans, and their relevant policies and objectives will be subject to SEA and AA prior to adoption.</p>	<p>No. This Action does not make provisions for or determine land-use within the subject area of County Sligo.</p> <p>All County or Local Area Plans, and their relevant policies and objectives will be subject to SEA and AA prior to adoption.</p>	<p>No potential effects on protected areas are predicted to result from the implementation of this Action- Refer to findings of Report for the Purposes of AA Screening.</p> <p>All County or Local Area Plans, and their relevant policies and objectives will be subject to SEA and AA prior to adoption.</p>

	Characteristics of Potential Effects and Subject Area								
	Potential for significant effects: probability, duration, frequency and reversibility	Potential cumulative effects	Potential transboundary effects	Potential risks to human health or the environment	Magnitude and spatial extent of the effects	Potential effects on natural or cultural heritage of subject area	Potential for exceeded environmental quality standards or limit values of subject area	Potential for intensive land-use of subject area	Potential effects on protected areas
	objectives will be subject to SEA and AA prior to adoption. No significant negative environmental effects are predicted to result from the implementation of this Action.	areas or Sectors, a potential cumulative (positive) effect is identified with regards climate adaptation at a national level.							
Monitor climate related events & create/update risk register. (Register of weather warnings provided etc.)	This Action will successfully contribute to climate adaptation in County Sligo by acquiring a database of knowledge on climate related events and identifying key risks. A potential positive effect on the population of Sligo is predicted as a result of enhanced climate adaptation No significant negative environmental effects are predicted to result from the implementation of this Action.	In accordance with the National Adaptation Strategy, each LA is required to make and adopt local adaptation strategies. Further, seven Government Departments/ Agencies have been identified with responsibility for twelve priority sectors which are required to prepare sectoral adaptation plans. Where enhanced resilience to climate change is achieved in each of these LA areas or Sectors, a potential cumulative (positive) effect is identified with	A potential (positive) transboundary effect is identified where information gained, or key risks are shared with other administrative areas.	Successful implementation of the Draft Adaptation Strategy is likely to result in an overall reduced risk to human health and the environment from the effects of climate change.	This Action will affect the subject area of County Sligo, with potential for cumulative and transboundary effects at a national level.	No potential effects on the natural or cultural heritage of County Sligo are predicted to result from the implementation of this Action.	No potential exceedance in environmental quality standards or limit values in County Sligo are predicted to result from the implementation of this Action.	No. This Action does not make provisions for or determine land-use within the subject area of County Sligo.	No potential effects on protected areas are predicted to result from the implementation of this Action- Refer to findings of Report for the Purposes of AA Screening.

	Characteristics of Potential Effects and Subject Area								
	Potential for significant effects: probability, duration, frequency and reversibility	Potential cumulative effects	Potential transboundary effects	Potential risks to human health or the environment	Magnitude and spatial extent of the effects	Potential effects on natural or cultural heritage of subject area	Potential for exceeded environmental quality standards or limit values of subject area	Potential for intensive land-use of subject area	Potential effects on protected areas
		regards climate adaptation at a national level.							
Compile relevant local Climate Impact maps	<p>This Action will successfully contribute to climate adaptation in County Sligo by identifying those areas most at risk to climate change and ensuring contingency and adaptation planning is focused in these areas.</p> <p>No significant negative environmental effects are predicted to result from the implementation of this Action.</p>	<p>In accordance with the National Adaptation Strategy, each LA is required to make and adopt local adaptation strategies. Further, seven Government Departments/ Agencies have been identified with responsibility for twelve priority sectors which are required to prepare sectoral adaptation plans.</p> <p>Where enhanced resilience to climate change is achieved in each of these LA areas or Sectors, a potential cumulative (positive) effect is identified with regards climate adaptation at a national level.</p>	A potential (positive) transboundary effect is identified where maps are shared with other administrative areas.	Successful implementation of the Draft Adaptation Strategy is likely to result in an overall reduced risk to human health and the environment from the effects of climate change.	This Action will affect the subject area of County Sligo, with potential for cumulative and transboundary effects at a national level.	No potential effects on the natural or cultural heritage of County Sligo are predicted to result from the implementation of this Action.	No potential exceedance in environmental quality standards or limit values in County Sligo are predicted to result from the implementation of this Action.	No. This Action does not make provisions for or determine land-use within the subject area of County Sligo.	No potential effects on protected areas are predicted to result from the implementation of this Action- Refer to findings of Report for the Purposes of AA Screening.
Develop a Sustainable Transport Plan for Co. Sligo (which should include provision for staff welfare facilities and bicycle maintenance program)	This Action will successfully contribute to climate adaptation in County Sligo through the promotion of, and	In accordance with the National Adaptation Strategy, each LA is required to make and adopt local adaptation	No transboundary effects are predicted to result from the implementation of this Action.	Successful implementation of the Draft Adaptation Strategy is likely to result in an overall reduced risk to	This Action will affect the subject area of County Sligo, with potential for cumulative effects at a national	No potential effects on the natural or cultural heritage of County Sligo are predicted to result from the	No potential exceedance in environmental quality standards or limit values in County Sligo are	No. This Action does not make provisions for or determine land-use within the subject area of County	No potential effects on protected areas are predicted to result from the implementation of this Action- Refer to

	Characteristics of Potential Effects and Subject Area								
	Potential for significant effects: probability, duration, frequency and reversibility	Potential cumulative effects	Potential transboundary effects	Potential risks to human health or the environment	Magnitude and spatial extent of the effects	Potential effects on natural or cultural heritage of subject area	Potential for exceeded environmental quality standards or limit values of subject area	Potential for intensive land-use of subject area	Potential effects on protected areas
	<p>planning for, sustainable transport use in the county.</p> <p>A potential positive effect on the population of Sligo is predicted as a result of enhanced climate adaptation plans.</p> <p>No significant negative environmental effects are predicted to result from the implementation of this Action.</p>	<p>strategies. Further, seven Government Departments/ Agencies have been identified with responsibility for twelve priority sectors which are required to prepare sectoral adaptation plans.</p> <p>Where enhanced resilience to climate change is achieved in each of these LA areas or Sectors, a potential cumulative (positive) effect is identified with regards climate adaptation at a national level.</p>		human health and the environment from the effects of climate change.	level.	implementation of this Action.	predicted to result from the implementation of this Action.	Sligo.	findings of Report for the Purposes of AA Screening.
Identify LA owned properties that may be suitable for 'greening' activities, such as community gardens or allotments, Pollinator sites, tree planting or other activities which would support Climate Awareness initiatives.	<p>This Action will successfully contribute to climate adaptation in County Sligo through the provision of increased biodiversity and enhanced ecosystem adaptation.</p> <p>A likely positive effect on biodiversity is therefore identified.</p>	<p>In accordance with the National Adaptation Strategy, each LA is required to make and adopt local adaptation strategies. Further, seven Government Departments/ Agencies have been identified with responsibility for twelve priority sectors which are required to prepare</p>	<p>A potential (positive) transboundary effect is predicted to result from the implementation of this Action through the strengthening of habitat networks, reduced habitat fragmentation and provision of opportunities for species to migrate.</p>	<p>Successful implementation of the Draft Adaptation Strategy is likely to result in an overall reduced risk to human health and the environment from the effects of climate change.</p>	<p>This Action will affect the subject area of County Sligo, with potential for cumulative, transboundary effects at a national level.</p>	<p>No potential effects on the natural or cultural heritage of County Sligo are predicted to result from the implementation of this Action.</p> <p>A potential positive effect on areas of natural heritage is identified as a result of increased biodiversity and</p>	<p>No potential exceedance in environmental quality standards or limit values in County Sligo are predicted to result from the implementation of this Action.</p>	<p>No. This Action does not make provisions for or determine land-use within the subject area of County Sligo.</p>	<p>No potential effects on protected areas are predicted to result from the implementation of this Action- Refer to findings of Report for the Purposes of AA Screening.</p>

	Characteristics of Potential Effects and Subject Area								
	Potential for significant effects: probability, duration, frequency and reversibility	Potential cumulative effects	Potential transboundary effects	Potential risks to human health or the environment	Magnitude and spatial extent of the effects	Potential effects on natural or cultural heritage of subject area	Potential for exceeded environmental quality standards or limit values of subject area	Potential for intensive land-use of subject area	Potential effects on protected areas
	<p>A potential positive effect on the population of Sligo is predicted as a result of enhanced climate adaptation</p> <p>No significant negative environmental effects are predicted to result from the implementation of this Action.</p>	<p>sectoral adaptation plans.</p> <p>Where enhanced resilience to climate change is achieved in each of these LA areas or Sectors, a potential cumulative (positive) effect is identified with regards climate adaptation at a national level.</p>				enhanced ecosystem adaptation.			
Install 3 X water bottle refilling stations in strategic locations as an initial phase of developing a program to re-introduce taps for public use throughout the County.	<p>This Action will successfully contribute to climate adaptation in County Sligo through the promotion of a reduction in single-use plastic and reduced waste generation.</p> <p>A potential positive effect on biodiversity, land and soil, water and population and human health is likely to result from the implementation of this Action.</p> <p>No significant negative</p>	<p>In accordance with the National Adaptation Strategy, each LA is required to make and adopt local adaptation strategies. Further, seven Government Departments/ Agencies have been identified with responsibility for twelve priority sectors which are required to prepare sectoral adaptation plans.</p> <p>Where enhanced resilience to climate change is achieved in each of these LA areas or Sectors, a</p>	A potential (positive) transboundary effect is predicted as a result of reduced dependence on bottled water (as sourced elsewhere), and due to a decrease in waste generation.	Successful implementation of the Draft Adaptation Strategy is likely to result in an overall reduced risk to human health and the environment from the effects of climate change.	This Action will affect the subject area of County Sligo, with potential for cumulative and transboundary effects at a national level.	No potential effects on the natural or cultural heritage of County Sligo are predicted to result from the implementation of this Action.	No potential exceedance in environmental quality standards or limit values in County Sligo are predicted to result from the implementation of this Action.	No. This Action does not make provisions for or determine land-use within the subject area of County Sligo.	No potential effects on protected areas are predicted to result from the implementation of this Action- Refer to findings of Report for the Purposes of AA Screening.

	Characteristics of Potential Effects and Subject Area								
	Potential for significant effects: probability, duration, frequency and reversibility	Potential cumulative effects	Potential transboundary effects	Potential risks to human health or the environment	Magnitude and spatial extent of the effects	Potential effects on natural or cultural heritage of subject area	Potential for exceeded environmental quality standards or limit values of subject area	Potential for intensive land-use of subject area	Potential effects on protected areas
	environmental effects are predicted to result from the implementation of this Action.	potential cumulative (positive) effect is identified with regards climate adaptation at a national level.							
Install an Air Quality Monitoring station in Sligo Town, and use data obtained to improve awareness about air quality.	<p>This Action will successfully contribute to climate adaptation in County Sligo through increased community awareness of the risk of poor air quality.</p> <p>A potential positive effect on air quality, and population and human health is predicted as a result of enhanced climate adaptation</p> <p>No significant negative environmental effects are predicted to result from the implementation of this Action.</p>	<p>In accordance with the National Adaptation Strategy, each LA is required to make and adopt local adaptation strategies. Further, seven Government Departments/ Agencies have been identified with responsibility for twelve priority sectors which are required to prepare sectoral adaptation plans.</p> <p>Where enhanced resilience to climate change is achieved in each of these LA areas or Sectors, a potential cumulative (positive) effect is identified with regards climate adaptation at a national level.</p>	A potential (positive) transboundary effect is identified where information gained, or lessons learned, are shared with other administrative areas.	Successful implementation of the Draft Adaptation Strategy is likely to result in an overall reduced risk to human health and the environment from the effects of climate change.	This Action will affect the subject area of County Sligo, with potential for cumulative and transboundary effects at a national level.	No potential effects on the natural or cultural heritage of County Sligo are predicted to result from the implementation of this Action.	No potential exceedance in environmental quality standards or limit values in County Sligo are predicted to result from the implementation of this Action.	No. This Action does not make provisions for or determine land-use within the subject area of County Sligo.	No potential effects on protected areas are predicted to result from the implementation of this Action- Refer to findings of Report for the Purposes of AA Screening.
Update the tenants handbook and the online communication and social media plan to provide the necessary climate	This Action will successfully contribute to climate	In accordance with the National Adaptation Strategy,	No transboundary effects are predicted to result from the	Successful implementation of the Draft Adaptation	This Action will affect the subject area of County	No potential effects on the natural or cultural heritage of	No potential exceedance in environmental	No. This Action does not make provisions for or	No potential effects on protected areas are predicted to

	Characteristics of Potential Effects and Subject Area								
	Potential for significant effects: probability, duration, frequency and reversibility	Potential cumulative effects	Potential transboundary effects	Potential risks to human health or the environment	Magnitude and spatial extent of the effects	Potential effects on natural or cultural heritage of subject area	Potential for exceeded environmental quality standards or limit values of subject area	Potential for intensive land-use of subject area	Potential effects on protected areas
change resilience information.	<p>adaptation in County Sligo by identifying key risks to infrastructure and the built environment and introducing measures to ensure that the upmost resilience to these risks is achieved.</p> <p>A potential positive effect on population and human health, as well as features of cultural heritage is predicted as a result of the identification of critical risks to infrastructure, and the subsequent development of relevant mitigation measures and contingency plans to reduce or remedy these risks.</p> <p>No significant negative environmental effects are predicted to result from the implementation of this Action.</p>	<p>each LA is required to make and adopt local adaptation strategies. Further, seven Government Departments/ Agencies have been identified with responsibility for twelve priority sectors which are required to prepare sectoral adaptation plans.</p> <p>Where enhanced resilience to climate change is achieved in each of these LA areas or Sectors, a potential cumulative (positive) effect is identified with regards climate adaptation at a national level.</p>	implementation of this Action.	Strategy is likely to result in an overall reduced risk to human health and the environment from the effects of climate change.	Sligo, with potential for cumulative effects at a national level.	County Sligo are predicted to result from the implementation of this Action.	quality standards or limit values in County Sligo are predicted to result from the implementation of this Action.	determine land-use within the subject area of County Sligo.	result from the implementation of this Action- Refer to findings of Report for the Purposes of AA Screening.
Identify old and derelict buildings that may cause a risk to public safety during	This Action will successfully	In accordance with the National	No transboundary effects are predicted	Successful implementation of	This Action will affect the subject	No potential effects on the natural or	No potential exceedance in	No. This Action does not make	No potential effects on protected areas

	Characteristics of Potential Effects and Subject Area								
	Potential for significant effects: probability, duration, frequency and reversibility	Potential cumulative effects	Potential transboundary effects	Potential risks to human health or the environment	Magnitude and spatial extent of the effects	Potential effects on natural or cultural heritage of subject area	Potential for exceeded environmental quality standards or limit values of subject area	Potential for intensive land-use of subject area	Potential effects on protected areas
extreme weather events, and take appropriate action	<p>contribute to climate adaptation in County Sligo by identifying key risks to infrastructure and the built environment and introducing measures to ensure that the upmost resilience to these risks is achieved.</p> <p>A potential positive effect on population and human health, as well as features of cultural heritage is predicted as a result of the identification of critical risks to infrastructure, and the subsequent development of relevant mitigation measures and contingency plans to reduce or remedy these risks.</p> <p>Demolition or development will be subject to EIA and AA, as required.</p> <p>No significant negative environmental</p>	<p>Adaptation Strategy, each LA is required to make and adopt local adaptation strategies. Further, seven Government Departments/ Agencies have been identified with responsibility for twelve priority sectors which are required to prepare sectoral adaptation plans.</p> <p>Where enhanced resilience to climate change is achieved in each of these LA areas or Sectors, a potential cumulative (positive) effect is identified with regards climate adaptation at a national level.</p>	to result from the implementation of this Action.	<p>the Draft Adaptation Strategy is likely to result in an overall reduced risk to human health and the environment from the effects of climate change.</p> <p>Demolition or development will be subject to EIA and AA, as required.</p>	area of County Sligo, with potential for cumulative effects at a national level.	<p>cultural heritage of County Sligo are predicted to result from the implementation of this Action.</p> <p>A potential positive effect on features of cultural heritage is predicted as a result of the identification of critical risks from climate change, and the subsequent development of relevant mitigation measures and contingency plans to reduce or remedy these risks.</p> <p>Demolition or development will be subject to EIA and AA, as required.</p>	environmental quality standards or limit values in County Sligo are predicted to result from the implementation of this Action.	provisions for or determine land-use within the subject area of County Sligo.	<p>are predicted to result from the implementation of this Action- Refer to findings of Report for the Purposes of AA Screening.</p> <p>Demolition or development will be subject to EIA and AA, as required.</p>

	Characteristics of Potential Effects and Subject Area								
	Potential for significant effects: probability, duration, frequency and reversibility	Potential cumulative effects	Potential transboundary effects	Potential risks to human health or the environment	Magnitude and spatial extent of the effects	Potential effects on natural or cultural heritage of subject area	Potential for exceeded environmental quality standards or limit values of subject area	Potential for intensive land-use of subject area	Potential effects on protected areas
	effects are predicted to result from the implementation of this Action.								
Where possible, work with Sligo SEC to identify funding opportunities for retrofit programs for LA housing.	<p>This Action will successfully contribute to climate adaptation in County Sligo by assisting the Council in identifying the most vulnerable housing stock and to enable the retrofitting of the same to enhance resilience to climate change.</p> <p>A potential positive effect on the population and human health in Sligo is predicted as a result of the implementation of this Action.</p> <p>No significant negative environmental effects are predicted to result from the implementation of this Action.</p>	<p>In accordance with the National Adaptation Strategy, each LA is required to make and adopt local adaptation strategies. Further, seven Government Departments/ Agencies have been identified with responsibility for twelve priority sectors which are required to prepare sectoral adaptation plans.</p> <p>Where enhanced resilience to climate change is achieved in each of these LA areas or Sectors, a potential cumulative (positive) effect is identified with regards climate adaptation at a national level.</p>	No transboundary effects are predicted to result from the implementation of this Action.	Successful implementation of the Draft Adaptation Strategy is likely to result in an overall reduced risk to human health and the environment from the effects of climate change.	This Action will affect the subject area of County Sligo, with potential for cumulative effects at a national level.	No potential effects on the natural or cultural heritage of County Sligo are predicted to result from the implementation of this Action.	No potential exceedance in environmental quality standards or limit values in County Sligo are predicted to result from the implementation of this Action.	No. This Action does not make provisions for or determine land-use within the subject area of County Sligo.	No potential effects on protected areas are predicted to result from the implementation of this Action- Refer to findings of Report for the Purposes of AA Screening.
Complete existing pilot project concerning retrofitting an older house to modern energy standards	This Action will successfully contribute to climate adaptation in County	In accordance with the National Adaptation Strategy, each LA is required	No transboundary effects are predicted to result from the implementation of	Successful implementation of the Draft Adaptation Strategy is likely to	This Action will affect the subject area of County Sligo, with potential	No potential effects on the natural or cultural heritage of County Sligo are	No potential exceedance in environmental quality standards or	No. This Action does not make provisions for or determine land-use	No potential effects on protected areas are predicted to result from the

	Characteristics of Potential Effects and Subject Area								
	Potential for significant effects: probability, duration, frequency and reversibility	Potential cumulative effects	Potential transboundary effects	Potential risks to human health or the environment	Magnitude and spatial extent of the effects	Potential effects on natural or cultural heritage of subject area	Potential for exceeded environmental quality standards or limit values of subject area	Potential for intensive land-use of subject area	Potential effects on protected areas
	<p>Sligo by assisting the Council in identifying the most vulnerable housing stock and to enable the retrofitting of the same to enhance resilience to climate change.</p> <p>A potential positive effect on the population and human health in Sligo is predicted as a result of the implementation of this Action.</p> <p>No significant negative environmental effects are predicted to result from the implementation of this Action.</p>	<p>to make and adopt local adaptation strategies. Further, seven Government Departments/ Agencies have been identified with responsibility for twelve priority sectors which are required to prepare sectoral adaptation plans.</p> <p>Where enhanced resilience to climate change is achieved in each of these LA areas or Sectors, a potential cumulative (positive) effect is identified with regards climate adaptation at a national level.</p>	this Action.	result in an overall reduced risk to human health and the environment from the effects of climate change.	for cumulative effects at a national level.	predicted to result from the implementation of this Action.	limit values in County Sligo are predicted to result from the implementation of this Action.	within the subject area of County Sligo.	implementation of this Action- Refer to findings of Report for the Purposes of AA Screening.
Work with and support Irish Water in identifying vulnerable public drinking water supplies or waste water treatment infrastructure and develop contingency plans in order to maintain access to water and waste water services.	<p>This Action will successfully contribute to climate adaptation in County Sligo by protecting the public water supply from the effects of climate change.</p> <p>A potential positive effect on the</p>	<p>In accordance with the National Adaptation Strategy, each LA is required to make and adopt local adaptation strategies. Further, seven Government Departments/ Agencies have been identified with responsibility</p>	A potential (positive) transboundary effect is predicted to result from the implementation of this Action, where the subject infrastructure is common to one or more county or administrative area	Successful implementation of the Draft Adaptation Strategy is likely to result in an overall reduced risk to human health and the environment from the effects of climate change.	This Action will affect the subject area of County Sligo, with potential for cumulative and transboundary effects at a national level.	No potential effects on the natural or cultural heritage of County Sligo are predicted to result from the implementation of this Action.	No potential exceedance in environmental quality standards or limit values in County Sligo are predicted to result from the implementation of this Action.	No. This Action does not make provisions for or determine land-use within the subject area of County Sligo.	No potential effects on protected areas are predicted to result from the implementation of this Action- Refer to findings of Report for the Purposes of AA Screening.

	Characteristics of Potential Effects and Subject Area								
	Potential for significant effects: probability, duration, frequency and reversibility	Potential cumulative effects	Potential transboundary effects	Potential risks to human health or the environment	Magnitude and spatial extent of the effects	Potential effects on natural or cultural heritage of subject area	Potential for exceeded environmental quality standards or limit values of subject area	Potential for intensive land-use of subject area	Potential effects on protected areas
	<p>population of Sligo is predicted as a result of enhanced climate adaptation.</p> <p>No significant negative environmental effects are predicted to result from the implementation of this Action.</p>	<p>for twelve priority sectors which are required to prepare sectoral adaptation plans.</p> <p>Where enhanced resilience to climate change is achieved in each of these LA areas or Sectors, a potential cumulative (positive) effect is identified with regards climate adaptation at a national level.</p>							
Develop a register of critical equipment, systems and assets at risk from existing and project climate events	<p>This Action will successfully contribute to climate adaptation in County Sligo by identifying key risks to infrastructure and the built environment.</p> <p>A potential positive effect on the population of Sligo is predicted as a result of enhanced climate adaptation.</p> <p>No significant negative environmental effects are predicted</p>	<p>In accordance with the National Adaptation Strategy, each LA is required to make and adopt local adaptation strategies. Further, seven Government Departments/ Agencies have been identified with responsibility for twelve priority sectors which are required to prepare sectoral adaptation plans.</p> <p>Where enhanced resilience to climate change is achieved</p>	A potential (positive) transboundary effect is predicted to result from the implementation of this Action, where the subject infrastructure is common to one or more county or administrative area.	Successful implementation of the Draft Adaptation Strategy is likely to result in an overall reduced risk to human health and the environment from the effects of climate change.	This Action will affect the subject area of County Sligo, with potential for cumulative and transboundary effects at a national level.	No potential effects on the natural or cultural heritage of County Sligo are predicted to result from the implementation of this Action.	No potential exceedance in environmental quality standards or limit values in County Sligo are predicted to result from the implementation of this Action.	No. This Action does not make provisions for or determine land-use within the subject area of County Sligo.	No potential effects on protected areas are predicted to result from the implementation of this Action- Refer to findings of Report for the Purposes of AA Screening.

	Characteristics of Potential Effects and Subject Area								
	Potential for significant effects: probability, duration, frequency and reversibility	Potential cumulative effects	Potential transboundary effects	Potential risks to human health or the environment	Magnitude and spatial extent of the effects	Potential effects on natural or cultural heritage of subject area	Potential for exceeded environmental quality standards or limit values of subject area	Potential for intensive land-use of subject area	Potential effects on protected areas
	to result from the implementation of this Action.	in each of these LA areas or Sectors, a potential cumulative (positive) effect is identified with regards climate adaptation at a national level.							
Ensure that impact of Climate related events on natural & cultural heritage is considered when reviewing the Heritage Plan.	<p>This Action will successfully contribute to climate adaptation in County Sligo by making provisions for the protection of heritage against climate impacts.</p> <p>A likely positive effect on archaeology and cultural heritage is therefore identified.</p> <p>A potential positive effect on the population of Sligo is predicted as a result of enhanced climate adaptation.</p> <p>No significant negative environmental effects are predicted to result from the implementation of this Action.</p>	<p>In accordance with the National Adaptation Strategy, each LA is required to make and adopt local adaptation strategies. Further, seven Government Departments/ Agencies have been identified with responsibility for twelve priority sectors which are required to prepare sectoral adaptation plans.</p> <p>Where enhanced resilience to climate change is achieved in each of these LA areas or Sectors, a potential cumulative (positive) effect is identified with regards climate adaptation at a national level.</p>	A potential (positive) transboundary effect is predicted to result from the implementation of heritage management and conservation measures where heritage features are common to one or more county or administrative area.	Successful implementation of the Draft Adaptation Strategy is likely to result in an overall reduced risk to human health and the environment from the effects of climate change.	This Action will affect the subject area of County Sligo, with potential for cumulative and transboundary effects at a national level.	<p>No potential effects on the natural or cultural heritage of County Sligo are predicted to result from the implementation of this Action.</p> <p>A likely positive effect on areas or features of cultural heritage is likely to result from the implementation of this Action through the protection of heritage against climate impacts.</p>	No potential exceedance in environmental quality standards or limit values in County Sligo are predicted to result from the implementation of this Action.	No. This Action does not make provisions for or determine land-use within the subject area of County Sligo.	No potential effects on protected areas are predicted to result from the implementation of this Action- Refer to findings of Report for the Purposes of AA Screening.

	Characteristics of Potential Effects and Subject Area								
	Potential for significant effects: probability, duration, frequency and reversibility	Potential cumulative effects	Potential transboundary effects	Potential risks to human health or the environment	Magnitude and spatial extent of the effects	Potential effects on natural or cultural heritage of subject area	Potential for exceeded environmental quality standards or limit values of subject area	Potential for intensive land-use of subject area	Potential effects on protected areas
Review & adopt Invasive Alien Species policy and consider the possibility of expanding this to a Biodiversity Policy.	<p>This Action will successfully contribute to climate adaptation in County Sligo by ensuring that projected climate change is taken into consideration in Invasive Species and biodiversity policy.</p> <p>A potential positive effect on biodiversity is therefore identified.</p> <p>A potential positive effect on the population of Sligo is predicted as a result of enhanced climate adaptation.</p> <p>No significant negative environmental effects are predicted to result from the implementation of this Action.</p>	<p>In accordance with the National Adaptation Strategy, each LA is required to make and adopt local adaptation strategies. Further, seven Government Departments/ Agencies have been identified with responsibility for twelve priority sectors which are required to prepare sectoral adaptation plans.</p> <p>Where enhanced resilience to climate change is achieved in each of these LA areas or Sectors, a potential cumulative (positive) effect is identified with regards climate adaptation at a national level.</p>	A potential (positive) transboundary effect is predicted to result from the implementation of biodiversity management and conservation measures where natural areas are common to one or more county or administrative area, through the control of invasive species.	Successful implementation of the Draft Adaptation Strategy is likely to result in an overall reduced risk to human health and the environment from the effects of climate change.	This Action will affect the subject area of County Sligo, with potential for cumulative and transboundary effects at a national level.	<p>No potential effects on the natural or cultural heritage of County Sligo are predicted to result from the implementation of this Action.</p> <p>A potential positive effect on areas of natural heritage is identified.</p>	No potential exceedance in environmental quality standards or limit values in County Sligo are predicted to result from the implementation of this Action.	No. This Action does not make provisions for or determine land-use within the subject area of County Sligo.	No potential effects on protected areas are predicted to result from the implementation of this Action- Refer to findings of Report for the Purposes of AA Screening.
Ensure that the Flood Risk Management Policies outlined in the CDP, as well as the Strategic Flood Risk Assessment, are implemented in full (See Appendix 1.2). To include: Flood Protection; Flood Management;	This Action will successfully contribute to climate adaptation in County Sligo by reducing the risk of flooding and the impacts of	In accordance with the National Adaptation Strategy, each LA is required to make and adopt local adaptation strategies. Further,	A potential (positive) transboundary effect is predicted to result from the implementation of this Action, where	Successful implementation of the Draft Adaptation Strategy is likely to result in an overall reduced risk to human health and	This Action will affect the subject area of County Sligo, with potential for cumulative effects at a national level.	No potential effects on the natural or cultural heritage of County Sligo are predicted to result from the implementation of	No potential exceedance in environmental quality standards or limit values in County Sligo are predicted to result	No. This Action does not make provisions for or determine land-use within the subject area of County Sligo.	No potential effects on protected areas are predicted to result from the implementation of this Action- Refer to findings of Report

	Characteristics of Potential Effects and Subject Area								
	Potential for significant effects: probability, duration, frequency and reversibility	Potential cumulative effects	Potential transboundary effects	Potential risks to human health or the environment	Magnitude and spatial extent of the effects	Potential effects on natural or cultural heritage of subject area	Potential for exceeded environmental quality standards or limit values of subject area	Potential for intensive land-use of subject area	Potential effects on protected areas
Flood Mapping; Register of Hard & Soft Flood Infrastructure	<p>the climate change on watercourses and coastlines.</p> <p>A potential positive effect on the population of Sligo is predicted as a result of enhanced climate adaptation</p> <p>A potential positive effect on biodiversity and land and soil is also identified as a result of reduced risk of the effects of extreme flood events.</p> <p>No significant negative environmental effects are predicted to result from the implementation of this Action.</p>	<p>seven Government Departments/ Agencies have been identified with responsibility for twelve priority sectors which are required to prepare sectoral adaptation plans.</p> <p>Where enhanced resilience to climate change is achieved in each of these LA areas or Sectors, a potential cumulative (positive) effect is identified with regards climate adaptation at a national level.</p>	the subject water bodies are common to one or more county or administrative area.	the environment from the effects of climate change.		this Action.	from the implementation of this Action.		for the Purposes of AA Screening.
Identify contractors and/or individuals who can grit roads that Council Staff are unable to reach.	This Action will successfully contribute to climate adaptation in County Sligo by ensuring measures are in place to prevent accidents and maintain access during periods of	In accordance with the National Adaptation Strategy, each LA is required to make and adopt local adaptation strategies. Further, seven Government Departments/ Agencies have been	A potential (positive) transboundary effect is predicted to result from the implementation of this Action, where the subject roads are common to one or more county or	Successful implementation of the Draft Adaptation Strategy is likely to result in an overall reduced risk to human health and the environment from the effects of climate change.	This Action will affect the subject area of County Sligo, with potential for cumulative and transboundary effects at a national level.	No potential effects on the natural or cultural heritage of County Sligo are predicted to result from the implementation of this Action.	No potential exceedance in environmental quality standards or limit values in County Sligo are predicted to result from the implementation of this Action.	No. This Action does not make provisions for or determine land-use within the subject area of County Sligo.	No potential effects on protected areas are predicted to result from the implementation of this Action- Refer to findings of Report for the Purposes of AA Screening.

	Characteristics of Potential Effects and Subject Area								
	Potential for significant effects: probability, duration, frequency and reversibility	Potential cumulative effects	Potential transboundary effects	Potential risks to human health or the environment	Magnitude and spatial extent of the effects	Potential effects on natural or cultural heritage of subject area	Potential for exceeded environmental quality standards or limit values of subject area	Potential for intensive land-use of subject area	Potential effects on protected areas
	<p>extreme cold weather.</p> <p>A potential positive effect on the population of Sligo is predicted as a result of enhanced climate adaptation</p> <p>No significant negative environmental effects are predicted to result from the implementation of this Action.</p>	<p>identified with responsibility for twelve priority sectors which are required to prepare sectoral adaptation plans.</p> <p>Where enhanced resilience to climate change is achieved in each of these LA areas or Sectors, a potential cumulative (positive) effect is identified with regards climate adaptation at a national level.</p>	administrative area.						
Increase use of 'hotmix' for improved quality roads (Lessens the impact of extended hot or cold periods on road surfaces)	<p>This Action will successfully contribute to climate adaptation in County Sligo by ensuring measures are in place to prevent accidents and maintain access during periods of extreme hot or cold weather.</p> <p>A potential positive effect on the population of Sligo is predicted as a result of enhanced climate adaptation</p>	<p>In accordance with the National Adaptation Strategy, each LA is required to make and adopt local adaptation strategies. Further, seven Government Departments/ Agencies have been identified with responsibility for twelve priority sectors which are required to prepare sectoral adaptation plans.</p> <p>Where enhanced</p>	A potential (positive) transboundary effect is predicted to result from the implementation of this Action, where the subject roads are common to one or more county or administrative area.	Successful implementation of the Draft Adaptation Strategy is likely to result in an overall reduced risk to human health and the environment from the effects of climate change.	This Action will affect the subject area of County Sligo, with potential for cumulative and transboundary effects at a national level.	No potential effects on the natural or cultural heritage of County Sligo are predicted to result from the implementation of this Action.	No potential exceedance in environmental quality standards or limit values in County Sligo are predicted to result from the implementation of this Action.	No. This Action does not make provisions for or determine land-use within the subject area of County Sligo.	No potential effects on protected areas are predicted to result from the implementation of this Action- Refer to findings of Report for the Purposes of AA Screening.

	Characteristics of Potential Effects and Subject Area								
	Potential for significant effects: probability, duration, frequency and reversibility	Potential cumulative effects	Potential transboundary effects	Potential risks to human health or the environment	Magnitude and spatial extent of the effects	Potential effects on natural or cultural heritage of subject area	Potential for exceeded environmental quality standards or limit values of subject area	Potential for intensive land-use of subject area	Potential effects on protected areas
	No significant negative environmental effects are predicted to result from the implementation of this Action.	resilience to climate change is achieved in each of these LA areas or Sectors, a potential cumulative (positive) effect is identified with regards climate adaptation at a national level.							
Provide grit/salt storage facilities in strategic local areas where the Local Authority may not be able to reach.	<p>This Action will successfully contribute to climate adaptation in County Sligo by ensuring measures are in place to prevent accidents and maintain access during periods of extreme cold weather.</p> <p>A potential positive effect on the population of Sligo is predicted as a result of enhanced climate adaptation</p> <p>No significant negative environmental effects are predicted to result from the implementation of this Action.</p>	<p>In accordance with the National Adaptation Strategy, each LA is required to make and adopt local adaptation strategies. Further, seven Government Departments/ Agencies have been identified with responsibility for twelve priority sectors which are required to prepare sectoral adaptation plans.</p> <p>Where enhanced resilience to climate change is achieved in each of these LA areas or Sectors, a potential cumulative (positive) effect is identified with regards climate adaptation at a</p>	A potential (positive) transboundary effect is predicted to result from the implementation of this Action, where the subject roads are common to one or more county or administrative area.	Successful implementation of the Draft Adaptation Strategy is likely to result in an overall reduced risk to human health and the environment from the effects of climate change.	This Action will affect the subject area of County Sligo, with potential for cumulative and transboundary effects at a national level.	No potential effects on the natural or cultural heritage of County Sligo are predicted to result from the implementation of this Action.	No potential exceedance in environmental quality standards or limit values in County Sligo are predicted to result from the implementation of this Action.	No. This Action does not make provisions for or determine land-use within the subject area of County Sligo.	No potential effects on protected areas are predicted to result from the implementation of this Action- Refer to findings of Report for the Purposes of AA Screening.

	Characteristics of Potential Effects and Subject Area								
	Potential for significant effects: probability, duration, frequency and reversibility	Potential cumulative effects	Potential transboundary effects	Potential risks to human health or the environment	Magnitude and spatial extent of the effects	Potential effects on natural or cultural heritage of subject area	Potential for exceeded environmental quality standards or limit values of subject area	Potential for intensive land-use of subject area	Potential effects on protected areas
		national level.							
Extend the Winter Service Plan to include additional roads.	<p>This Action will successfully contribute to climate adaptation in County Sligo by ensuring measures are in place to prevent accidents and maintain access during periods of extreme cold weather.</p> <p>A potential positive effect on the population of Sligo is predicted as a result of enhanced climate adaptation</p> <p>No significant negative environmental effects are predicted to result from the implementation of this Action.</p>	<p>In accordance with the National Adaptation Strategy, each LA is required to make and adopt local adaptation strategies. Further, seven Government Departments/ Agencies have been identified with responsibility for twelve priority sectors which are required to prepare sectoral adaptation plans.</p> <p>Where enhanced resilience to climate change is achieved in each of these LA areas or Sectors, a potential cumulative (positive) effect is identified with regards climate adaptation at a national level.</p>	A potential (positive) transboundary effect is predicted to result from the implementation of this Action, where the subject roads are common to one or more county or administrative area.	Successful implementation of the Draft Adaptation Strategy is likely to result in an overall reduced risk to human health and the environment from the effects of climate change.	This Action will affect the subject area of County Sligo, with potential for cumulative and transboundary effects at a national level.	No potential effects on the natural or cultural heritage of County Sligo are predicted to result from the implementation of this Action.	No potential exceedance in environmental quality standards or limit values in County Sligo are predicted to result from the implementation of this Action.	No. This Action does not make provisions for or determine land-use within the subject area of County Sligo.	No potential effects on protected areas are predicted to result from the implementation of this Action- Refer to findings of Report for the Purposes of AA Screening.
Provide adequate lifeguard & beach warden cover for beaches during extended periods of warm weather.	This Action will successfully contribute to climate adaptation in County Sligo by ensuring measures are in place to prevent	In accordance with the National Adaptation Strategy, each LA is required to make and adopt local adaptation strategies. Further,	A potential (positive) transboundary effect is predicted to result from the implementation of this Action, where	Successful implementation of the Draft Adaptation Strategy is likely to result in an overall reduced risk to human health and	This Action will affect the subject area of County Sligo, with potential for cumulative and transboundary effects at a national	No potential effects on the natural or cultural heritage of County Sligo are predicted to result from the implementation of	No potential exceedance in environmental quality standards or limit values in County Sligo are predicted to result	No. This Action does not make provisions for or determine land-use within the subject area of County Sligo.	No potential effects on protected areas are predicted to result from the implementation of this Action- Refer to findings of Report

	Characteristics of Potential Effects and Subject Area								
	Potential for significant effects: probability, duration, frequency and reversibility	Potential cumulative effects	Potential transboundary effects	Potential risks to human health or the environment	Magnitude and spatial extent of the effects	Potential effects on natural or cultural heritage of subject area	Potential for exceeded environmental quality standards or limit values of subject area	Potential for intensive land-use of subject area	Potential effects on protected areas
	<p>accidents during extended periods of warm weather.</p> <p>A potential positive effect on the population of Sligo is predicted as a result of enhanced climate adaptation</p> <p>No significant negative environmental effects are predicted to result from the implementation of this Action.</p>	<p>seven Government Departments/ Agencies have been identified with responsibility for twelve priority sectors which are required to prepare sectoral adaptation plans.</p> <p>Where enhanced resilience to climate change is achieved in each of these LA areas or Sectors, a potential cumulative (positive) effect is identified with regards climate adaptation at a national level.</p>	the subject beaches are common to one or more county or administrative area.	the environment from the effects of climate change.	level.	this Action.	from the implementation of this Action.		for the Purposes of AA Screening.
Ensure that adequate staff are available to deal with extreme events.	<p>This Action will successfully contribute to climate adaptation in County Sligo by ensuring adequate staff are available to deal with extreme events.</p> <p>A potential positive effect on the population of Sligo is predicted as a result of enhanced climate adaptation</p>	<p>In accordance with the National Adaptation Strategy, each LA is required to make and adopt local adaptation strategies. Further, seven Government Departments/ Agencies have been identified with responsibility for twelve priority sectors which are required to prepare sectoral adaptation</p>	No transboundary effects are predicted to result from the implementation of this Action.	Successful implementation of the Draft Adaptation Strategy is likely to result in an overall reduced risk to human health and the environment from the effects of climate change.	This Action will affect the subject area of County Sligo, with potential for cumulative effects at a national level.	No potential effects on the natural or cultural heritage of County Sligo are predicted to result from the implementation of this Action.	No potential exceedance in environmental quality standards or limit values in County Sligo are predicted to result from the implementation of this Action.	No. This Action does not make provisions for or determine land-use within the subject area of County Sligo.	No potential effects on protected areas are predicted to result from the implementation of this Action- Refer to findings of Report for the Purposes of AA Screening.

	Characteristics of Potential Effects and Subject Area								
	Potential for significant effects: probability, duration, frequency and reversibility	Potential cumulative effects	Potential transboundary effects	Potential risks to human health or the environment	Magnitude and spatial extent of the effects	Potential effects on natural or cultural heritage of subject area	Potential for exceeded environmental quality standards or limit values of subject area	Potential for intensive land-use of subject area	Potential effects on protected areas
	No significant negative environmental effects are predicted to result from the implementation of this Action.	plans. Where enhanced resilience to climate change is achieved in each of these LA areas or Sectors, a potential cumulative (positive) effect is identified with regards climate adaptation at a national level.							
Ensure that adequate plant is available to deal with extreme events.	<p>This Action will successfully contribute to climate adaptation in County Sligo by ensuring adequate plant is available to deal with extreme events.</p> <p>A potential positive effect on the population of Sligo is predicted as a result of enhanced climate adaptation</p> <p>No significant negative environmental effects are predicted to result from the implementation of this Action.</p>	<p>In accordance with the National Adaptation Strategy, each LA is required to make and adopt local adaptation strategies. Further, seven Government Departments/ Agencies have been identified with responsibility for twelve priority sectors which are required to prepare sectoral adaptation plans.</p> <p>Where enhanced resilience to climate change is achieved in each of these LA areas or Sectors, a potential cumulative (positive) effect is</p>	No transboundary effects are predicted to result from the implementation of this Action.	Successful implementation of the Draft Adaptation Strategy is likely to result in an overall reduced risk to human health and the environment from the effects of climate change.	This Action will affect the subject area of County Sligo, with potential for cumulative effects at a national level.	No potential effects on the natural or cultural heritage of County Sligo are predicted to result from the implementation of this Action.	No potential exceedance in environmental quality standards or limit values in County Sligo are predicted to result from the implementation of this Action.	No. This Action does not make provisions for or determine land-use within the subject area of County Sligo.	No potential effects on protected areas are predicted to result from the implementation of this Action- Refer to findings of Report for the Purposes of AA Screening.

	Characteristics of Potential Effects and Subject Area								
	Potential for significant effects: probability, duration, frequency and reversibility	Potential cumulative effects	Potential transboundary effects	Potential risks to human health or the environment	Magnitude and spatial extent of the effects	Potential effects on natural or cultural heritage of subject area	Potential for exceeded environmental quality standards or limit values of subject area	Potential for intensive land-use of subject area	Potential effects on protected areas
		identified with regards climate adaptation at a national level.							
Goal 3: To ensure that Sligo County Council is adequately prepared for the projected impacts of Climate Change in the future.									
Convene a Climate Action/Energy/Sustainability Team & assign responsibility for implementation (CAEST)	<p>This Action will successfully contribute to climate adaptation in County Sligo by facilitating the successful delivery of the proposed Adaptation Actions.</p> <p>A potential positive effect on the population of Sligo is predicted as a result of enhanced climate adaptation.</p> <p>No significant negative environmental effects are predicted to result from the implementation of this Action.</p>	<p>In accordance with the National Adaptation Strategy, each LA is required to make and adopt local adaptation strategies. Further, seven Government Departments/ Agencies have been identified with responsibility for twelve priority sectors which are required to prepare sectoral adaptation plans.</p> <p>Where enhanced resilience to climate change is achieved in each of these LA areas or Sectors, a potential cumulative (positive) effect is identified with regards climate adaptation at a national level.</p>	No transboundary effects are predicted to result from the implementation of this Action.	Successful implementation of the Draft Adaptation Strategy is likely to result in an overall reduced risk to human health and the environment from the effects of climate change.	This Action will affect the subject area of County Sligo, with potential for cumulative effects at a national level.	No potential effects on the natural or cultural heritage of County Sligo are predicted to result from the implementation of this Action.	No potential exceedance in environmental quality standards or limit values in County Sligo are predicted to result from the implementation of this Action.	No. This Action does not make provisions for or determine land-use within the subject area of County Sligo.	No potential effects on protected areas are predicted to result from the implementation of this Action- Refer to findings of Report for the Purposes of AA Screening.
Ensure that adequate internal resources are identified to progress the actions identified in the adaptation strategy	This Action will successfully contribute to climate adaptation in County	In accordance with the National Adaptation Strategy, each LA is required	No transboundary effects are predicted to result from the implementation of	Successful implementation of the Draft Adaptation Strategy is likely to	This Action will affect the subject area of County Sligo, with potential	No potential effects on the natural or cultural heritage of County Sligo are	No potential exceedance in environmental quality standards or	No. This Action does not make provisions for or determine land-use	No potential effects on protected areas are predicted to result from the

	Characteristics of Potential Effects and Subject Area								
	Potential for significant effects: probability, duration, frequency and reversibility	Potential cumulative effects	Potential transboundary effects	Potential risks to human health or the environment	Magnitude and spatial extent of the effects	Potential effects on natural or cultural heritage of subject area	Potential for exceeded environmental quality standards or limit values of subject area	Potential for intensive land-use of subject area	Potential effects on protected areas
	<p>Sligo by facilitating the successful delivery of the proposed Adaptation Actions.</p> <p>A potential positive effect on the population of Sligo is predicted as a result of enhanced climate adaptation.</p> <p>No significant negative environmental effects are predicted to result from the implementation of this Action.</p>	<p>to make and adopt local adaptation strategies. Further, seven Government Departments/ Agencies have been identified with responsibility for twelve priority sectors which are required to prepare sectoral adaptation plans.</p> <p>Where enhanced resilience to climate change is achieved in each of these LA areas or Sectors, a potential cumulative (positive) effect is identified with regards climate adaptation at a national level.</p>	this Action.	result in an overall reduced risk to human health and the environment from the effects of climate change.	for cumulative effects at a national level.	predicted to result from the implementation of this Action.	limit values in County Sligo are predicted to result from the implementation of this Action.	within the subject area of County Sligo.	implementation of this Action- Refer to findings of Report for the Purposes of AA Screening.

	Characteristics of Potential Effects and Subject Area								
	Potential for significant effects: probability, duration, frequency and reversibility	Potential cumulative effects	Potential transboundary effects	Potential risks to human health or the environment	Magnitude and spatial extent of the effects	Potential effects on natural or cultural heritage of subject area	Potential for exceeded environmental quality standards or limit values of subject area	Potential for intensive land-use of subject area	Potential effects on protected areas
Include Climate Action & Sustainability on the agenda of all Section meetings	<p>This Action will successfully contribute to climate adaptation in County Sligo by ensuring climate change and sustainability is kept at the forefront of council actions and discussions.</p> <p>A potential positive effect on the population of Sligo is predicted as a result of enhanced climate adaptation</p> <p>No significant negative environmental effects are predicted to result from the implementation of this Action.</p>	<p>In accordance with the National Adaptation Strategy, each LA is required to make and adopt local adaptation strategies. Further, seven Government Departments/ Agencies have been identified with responsibility for twelve priority sectors which are required to prepare sectoral adaptation plans.</p> <p>Where enhanced resilience to climate change is achieved in each of these LA areas or Sectors, a potential cumulative (positive) effect is identified with regards climate adaptation at a national level.</p>	No transboundary effects are predicted to result from the implementation of this Action.	Successful implementation of the Draft Adaptation Strategy is likely to result in an overall reduced risk to human health and the environment from the effects of climate change.	This Action will affect the subject area of County Sligo, with potential for cumulative effects at a national level.	No potential effects on the natural or cultural heritage of County Sligo are predicted to result from the implementation of this Action.	No potential exceedance in environmental quality standards or limit values in County Sligo are predicted to result from the implementation of this Action.	No. This Action does not make provisions for or determine land-use within the subject area of County Sligo.	No potential effects on protected areas are predicted to result from the implementation of this Action- Refer to findings of Report for the Purposes of AA Screening.
Include Green Procurement when revising Corporate Procurement Policy. Include Energy reporting for all potential contractors and possible use of EPCs in future.	This Action will successfully contribute to climate adaptation in County Sligo by integrating climate change and sustainability, as well as energy reporting into the	In accordance with the National Adaptation Strategy, each LA is required to make and adopt local adaptation strategies. Further, seven Government Departments/	No transboundary effects are predicted to result from the implementation of this Action.	Successful implementation of the Draft Adaptation Strategy is likely to result in an overall reduced risk to human health and the environment from the effects of	This Action will affect the subject area of County Sligo, with potential for cumulative effects at a national level.	No potential effects on the natural or cultural heritage of County Sligo are predicted to result from the implementation of this Action.	No potential exceedance in environmental quality standards or limit values in County Sligo are predicted to result from the implementation of	No. This Action does not make provisions for or determine land-use within the subject area of County Sligo.	No potential effects on protected areas are predicted to result from the implementation of this Action- Refer to findings of Report for the Purposes of AA Screening.

	Characteristics of Potential Effects and Subject Area								
	Potential for significant effects: probability, duration, frequency and reversibility	Potential cumulative effects	Potential transboundary effects	Potential risks to human health or the environment	Magnitude and spatial extent of the effects	Potential effects on natural or cultural heritage of subject area	Potential for exceeded environmental quality standards or limit values of subject area	Potential for intensive land-use of subject area	Potential effects on protected areas
	<p>procurement policy of the Council.</p> <p>A potential positive effect on the population of Sligo is predicted as a result of enhanced climate adaptation</p> <p>No significant negative environmental effects are predicted to result from the implementation of this Action.</p>	<p>Agencies have been identified with responsibility for twelve priority sectors which are required to prepare sectoral adaptation plans.</p> <p>Where enhanced resilience to climate change is achieved in each of these LA areas or Sectors, a potential cumulative (positive) effect is identified with regards climate adaptation at a national level.</p>		climate change.			this Action.		
Include the objective of being Climate Ready as a Strategic Goal of the Corporate Plan (See Appendix 1.1 for current Climate related content)	<p>This Action will successfully contribute to climate adaptation in County Sligo by integrating climate adaptation as a Strategic Goal of the Corporate Plan. The Council are committed to delivering the strategic goals of the Corporate Plan, and their corresponding actions over the Plan period.</p> <p>A potential positive</p>	<p>In accordance with the National Adaptation Strategy, each LA is required to make and adopt local adaptation strategies. Further, seven Government Departments/ Agencies have been identified with responsibility for twelve priority sectors which are required to prepare sectoral adaptation plans.</p>	No transboundary effects are predicted to result from the implementation of this Action.	Successful implementation of the Draft Adaptation Strategy is likely to result in an overall reduced risk to human health and the environment from the effects of climate change.	This Action will affect the subject area of County Sligo, with potential for cumulative effects at a national level.	No potential effects on the natural or cultural heritage of County Sligo are predicted to result from the implementation of this Action.	No potential exceedance in environmental quality standards or limit values in County Sligo are predicted to result from the implementation of this Action.	No. This Action does not make provisions for or determine land-use within the subject area of County Sligo.	No potential effects on protected areas are predicted to result from the implementation of this Action- Refer to findings of Report for the Purposes of AA Screening.

	Characteristics of Potential Effects and Subject Area								
	Potential for significant effects: probability, duration, frequency and reversibility	Potential cumulative effects	Potential transboundary effects	Potential risks to human health or the environment	Magnitude and spatial extent of the effects	Potential effects on natural or cultural heritage of subject area	Potential for exceeded environmental quality standards or limit values of subject area	Potential for intensive land-use of subject area	Potential effects on protected areas
	<p>effect on the population of Sligo is predicted as a result of enhanced climate adaptation</p> <p>No significant negative environmental effects are predicted to result from the implementation of this Action.</p>	Where enhanced resilience to climate change is achieved in each of these LA areas or Sectors, a potential cumulative (positive) effect is identified with regards climate adaptation at a national level.							
Prepare an annual progress report draft adaptation strategy which will be submitted to the Council with the draft budget	<p>This Action will successfully contribute to climate adaptation in County Sligo by ensuring the Elected Members and public are kept up-to-date on climate change risks, impacts and adaptation and mitigation measures in the County.</p> <p>A potential positive effect on the population of Sligo is predicted as a result of enhanced climate adaptation</p> <p>No significant negative environmental effects are predicted</p>	<p>In accordance with the National Adaptation Strategy, each LA is required to make and adopt local adaptation strategies. Further, seven Government Departments/ Agencies have been identified with responsibility for twelve priority sectors which are required to prepare sectoral adaptation plans.</p> <p>Where enhanced resilience to climate change is achieved in each of these LA areas or Sectors, a potential cumulative (positive) effect is</p>	A potential (positive) transboundary effect is identified where information gained, or lessons learned are shared with other administrative areas.	Successful implementation of the Draft Adaptation Strategy is likely to result in an overall reduced risk to human health and the environment from the effects of climate change.	This Action will affect the subject area of County Sligo, with potential for cumulative and transboundary effects at a national level.	No potential effects on the natural or cultural heritage of County Sligo are predicted to result from the implementation of this Action.	No potential exceedance in environmental quality standards or limit values in County Sligo are predicted to result from the implementation of this Action.	No. This Action does not make provisions for or determine land-use within the subject area of County Sligo.	No potential effects on protected areas are predicted to result from the implementation of this Action- Refer to findings of Report for the Purposes of AA Screening.

	Characteristics of Potential Effects and Subject Area								
	Potential for significant effects: probability, duration, frequency and reversibility	Potential cumulative effects	Potential transboundary effects	Potential risks to human health or the environment	Magnitude and spatial extent of the effects	Potential effects on natural or cultural heritage of subject area	Potential for exceeded environmental quality standards or limit values of subject area	Potential for intensive land-use of subject area	Potential effects on protected areas
	to result from the implementation of this Action.	identified with regards climate adaptation at a national level.							
Develop Implementation Plans for each Adaptation Action and monitor and report on progress	<p>This Action will successfully contribute to climate adaptation in County Sligo by facilitating the successful delivery of the proposed Adaptation Actions.</p> <p>A potential positive effect on the population of Sligo is predicted as a result of enhanced climate adaptation.</p> <p>No significant negative environmental effects are predicted to result from the implementation of this Action.</p>	<p>In accordance with the National Adaptation Strategy, each LA is required to make and adopt local adaptation strategies. Further, seven Government Departments/ Agencies have been identified with responsibility for twelve priority sectors which are required to prepare sectoral adaptation plans.</p> <p>Where enhanced resilience to climate change is achieved in each of these LA areas or Sectors, a potential cumulative (positive) effect is identified with regards climate adaptation at a national level.</p>	A potential (positive) transboundary effect is identified where information gained, or lessons learned, are shared with other administrative areas.	Successful implementation of the Draft Adaptation Strategy is likely to result in an overall reduced risk to human health and the environment from the effects of climate change.	This Action will affect the subject area of County Sligo, with potential for cumulative and transboundary effects at a national level.	No potential effects on the natural or cultural heritage of County Sligo are predicted to result from the implementation of this Action.	No potential exceedance in environmental quality standards or limit values in County Sligo are predicted to result from the implementation of this Action.	No. This Action does not make provisions for or determine land-use within the subject area of County Sligo.	No potential effects on protected areas are predicted to result from the implementation of this Action- Refer to findings of Report for the Purposes of AA Screening.
Review and update the Major Emergency Plan to take account of the changing climate, frequency and severity of climatic events.	This Action will successfully contribute to climate adaptation in County Sligo by ensuring	In accordance with the National Adaptation Strategy, each LA is required to make and adopt	A potential (positive) transboundary effect is identified where potential	The preparation of a robust emergency response plan is likely to result in a reduced risk to	This Action will affect the subject area of County Sligo, with potential for cumulative	No potential effects on the natural or cultural heritage of County Sligo are predicted to result	No potential exceedance in environmental quality standards or limit values in	No. This Action does not make provisions for or determine land-use within the subject	No potential effects on protected areas are predicted to result from the implementation of

	Characteristics of Potential Effects and Subject Area								
	Potential for significant effects: probability, duration, frequency and reversibility	Potential cumulative effects	Potential transboundary effects	Potential risks to human health or the environment	Magnitude and spatial extent of the effects	Potential effects on natural or cultural heritage of subject area	Potential for exceeded environmental quality standards or limit values of subject area	Potential for intensive land-use of subject area	Potential effects on protected areas
	<p>that emergency response plans for County Sligo adequately address potential for extreme weather events and potential impacts of the same.</p> <p>A potential positive effect on the population of Sligo is predicted as a result of enhanced climate adaptation.</p> <p>No significant negative environmental effects are predicted to result from the implementation of this Action.</p>	<p>local adaptation strategies.</p> <p>Where enhanced resilience to climate change is achieved in each of these LA areas, a potential cumulative (positive) effect is identified with regards climate adaptation at a national level.</p>	<p>emergencies occur or effect one or more county or administrative area.</p>	<p>human health and the environment as a result of enhanced preparedness for, and management of extreme weather events, and other major accidents/disasters, should they occur.</p>	<p>effects at a national level.</p>	<p>from the implementation of this Action.</p>	<p>County Sligo are predicted to result from the implementation of this Action.</p>	<p>area of County Sligo.</p>	<p>this Action- Refer to findings of Report for the Purposes of AA Screening.</p>
<p>Review and update the Health & Safety Statements and Risk Assessments to take account of the changing climate, frequency and severity of climatic events.</p>	<p>This Action will successfully contribute to climate adaptation in County Sligo by ensuring that Health & Safety Statements and Risk Assessments for County Sligo adequately address potential for extreme weather events and potential impacts of the same.</p>	<p>In accordance with the National Adaptation Strategy, each LA is required to make and adopt local adaptation strategies.</p> <p>Where enhanced resilience to climate change is achieved in each of these LA areas, a potential cumulative (positive) effect is</p>	<p>No transboundary effects are predicted to result from the implementation of this Action.</p>	<p>The preparation of robust Health & Safety Statements and Risk Assessments is likely to result in a reduced risk to human health and the environment as a result of enhanced preparedness for, and management of, extreme weather events, and other major accidents/</p>	<p>This Action will affect the subject area of County Sligo, with potential for cumulative effects at a national level.</p>	<p>No potential effects on the natural or cultural heritage of County Sligo are predicted to result from the implementation of this Action.</p>	<p>No potential exceedance in environmental quality standards or limit values in County Sligo are predicted to result from the implementation of this Action.</p>	<p>No. This Action does not make provisions for or determine land-use within the subject area of County Sligo.</p>	<p>No potential effects on protected areas are predicted to result from the implementation of this Action- Refer to findings of Report for the Purposes of AA Screening.</p>

	Characteristics of Potential Effects and Subject Area								
	Potential for significant effects: probability, duration, frequency and reversibility	Potential cumulative effects	Potential transboundary effects	Potential risks to human health or the environment	Magnitude and spatial extent of the effects	Potential effects on natural or cultural heritage of subject area	Potential for exceeded environmental quality standards or limit values of subject area	Potential for intensive land-use of subject area	Potential effects on protected areas
	<p>A potential positive effect on the population of Sligo is predicted as a result of enhanced climate adaptation.</p> <p>No significant negative environmental effects are predicted to result from the implementation of this Action.</p>	identified with regards climate adaptation at a national level.		disasters, should they occur.					
Encourage and promote projects/businesses that will contribute positively and grow the Circular and Bio-economy to promote sustainable rural and urban economic development as part of the overall aim of transitioning to a low carbon economy	<p>This Action will successfully contribute to climate adaptation in County Sligo by supporting businesses or projects that will contribute to the bio-economy, support a shift to a low carbon economy and consequently promote climate change mitigation or adaptation.</p> <p>A potential positive effect on the population of Sligo is predicted as a result of enhanced climate adaptation.</p>	<p>In accordance with the National Adaptation Strategy, each LA is required to make and adopt local adaptation strategies. Further, seven Government Departments/ Agencies have been identified with responsibility for twelve priority sectors which are required to prepare sectoral adaptation plans.</p> <p>Where enhanced resilience to climate change is achieved in each of these LA areas or Sectors, a</p>	No transboundary effects are predicted to result from the implementation of this Action.	Successful implementation of the Draft Adaptation Strategy is likely to result in an overall reduced risk to human health and the environment from the effects of climate change.	This Action will affect the subject area of County Sligo, with potential for cumulative effects at a national level.	No potential effects on the natural or cultural heritage of County Sligo are predicted to result from the implementation of this Action.	No potential exceedance in environmental quality standards or limit values in County Sligo are predicted to result from the implementation of this Action.	No. This Action does not make provisions for or determine land-use within the subject area of County Sligo.	No potential effects on protected areas are predicted to result from the implementation of this Action- Refer to findings of Report for the Purposes of AA Screening.

	Characteristics of Potential Effects and Subject Area								
	Potential for significant effects: probability, duration, frequency and reversibility	Potential cumulative effects	Potential transboundary effects	Potential risks to human health or the environment	Magnitude and spatial extent of the effects	Potential effects on natural or cultural heritage of subject area	Potential for exceeded environmental quality standards or limit values of subject area	Potential for intensive land-use of subject area	Potential effects on protected areas
	No significant negative environmental effects are predicted to result from the implementation of this Action.	potential cumulative (positive) effect is identified with regards climate adaptation at a national level.							
Develop a Climate Change Awareness Programme for business and start-ups to inform them of climate action measures that can be integrated into business activities, and identify business supports and funding options to businesses seeking to become more resilient to climate change events.	<p>This Action will successfully contribute to climate adaptation in County Sligo by promoting and enabling climate preparedness and resilience at local level and respond to the impacts of climate change locally.</p> <p>A potential positive effect on the population of Sligo is predicted as a result of enhanced climate adaptation.</p> <p>No significant negative environmental effects are predicted to result from the implementation of this Action.</p>	<p>In accordance with the National Adaptation Strategy, each LA is required to make and adopt local adaptation strategies. Further, seven Government Departments/ Agencies have been identified with responsibility for twelve priority sectors which are required to prepare sectoral adaptation plans.</p> <p>Where enhanced resilience to climate change is achieved in each of these LA areas or Sectors, a potential cumulative (positive) effect is identified with regards climate adaptation at a national level.</p>	No transboundary effects are predicted to result from the implementation of this Action.	Successful implementation of the Draft Adaptation Strategy is likely to result in an overall reduced risk to human health and the environment from the effects of climate change.	This Action will affect the subject area of County Sligo, with potential for cumulative effects at a national level.	No potential effects on the natural or cultural heritage of County Sligo are predicted to result from the implementation of this Action.	No potential exceedance in environmental quality standards or limit values in County Sligo are predicted to result from the implementation of this Action.	No. This Action does not make provisions for or determine land-use within the subject area of County Sligo.	No potential effects on protected areas are predicted to result from the implementation of this Action- Refer to findings of Report for the Purposes of AA Screening.

	Characteristics of Potential Effects and Subject Area								
	Potential for significant effects: probability, duration, frequency and reversibility	Potential cumulative effects	Potential transboundary effects	Potential risks to human health or the environment	Magnitude and spatial extent of the effects	Potential effects on natural or cultural heritage of subject area	Potential for exceeded environmental quality standards or limit values of subject area	Potential for intensive land-use of subject area	Potential effects on protected areas
Consider the Installation & maintenance of simple net filters on surface water discharge points to remove any plastic waste before it enters Sligo Bay. This will help to protect biodiversity & water quality, but also enhance awareness of plastic waste management issues, and the need to reduce the amount being produced.	<p>A potential positive effect on biodiversity, water and population and human health identified as a result of reduced risk of plastic pollution in Sligo Bay.</p> <p>No significant negative environmental effects are predicted to result from the implementation of this Action.</p>	No cumulative effects are identified	A potential (positive) transboundary effect is predicted to result from the implementation of this Action, where the subject water bodies are common to one or more county or administrative area.	Successful implementation of this Adaptation Action is likely to result in an overall reduced risk to human health and the environment.	This Action will affect the subject area of County Sligo, with potential for transboundary effects.	The implementation of this action is likely to result in a positive effect on the natural heritage of Sligo.	No potential exceedance in environmental quality standards or limit values in County Sligo are predicted to result from the implementation of this Action.	No. This Action does not make provisions for or determine land-use within the subject area of County Sligo.	No potential effects on protected areas are predicted to result from the implementation of this Action- Refer to findings of Report for the Purposes of AA Screening.
During remediation works at the closed Finisklin landfill site, ensure that the most climate friendly approach is taken, and consider innovative solutions such as bio-filters. Use the remediation works as an opportunity for promoting awareness about waste management and its impact on climate.	<p>This Action will successfully contribute to climate adaptation in County Sligo by promoting proper waste management and ensuring that the Finisklin landfill adopts climate friendly remediation.</p> <p>A potential positive effect on the population of Sligo is predicted as a result of enhanced climate adaptation.</p> <p>No significant</p>	<p>In accordance with the National Adaptation Strategy, each LA is required to make and adopt local adaptation strategies. Further, seven Government Departments/ Agencies have been identified with responsibility for twelve priority sectors which are required to prepare sectoral adaptation plans.</p> <p>Where enhanced resilience to climate change is achieved</p>	No transboundary effects are predicted to result from the implementation of this Action.	Successful implementation of the Draft Adaptation Strategy is likely to result in an overall reduced risk to human health and the environment from the effects of climate change.	This Action will affect the subject area of County Sligo, with potential for cumulative effects at a national level.	No potential effects on the natural or cultural heritage of County Sligo are predicted to result from the implementation of this Action.	No potential exceedance in environmental quality standards or limit values in County Sligo are predicted to result from the implementation of this Action.	No. This Action does not make provisions for or determine land-use within the subject area of County Sligo.	No potential effects on protected areas are predicted to result from the implementation of this Action- Refer to findings of Report for the Purposes of AA Screening.

	Characteristics of Potential Effects and Subject Area								
	Potential for significant effects: probability, duration, frequency and reversibility	Potential cumulative effects	Potential transboundary effects	Potential risks to human health or the environment	Magnitude and spatial extent of the effects	Potential effects on natural or cultural heritage of subject area	Potential for exceeded environmental quality standards or limit values of subject area	Potential for intensive land-use of subject area	Potential effects on protected areas
	negative environmental effects are predicted to result from the implementation of this Action.	in each of these LA areas or Sectors, a potential cumulative (positive) effect is identified with regards climate adaptation at a national level.							