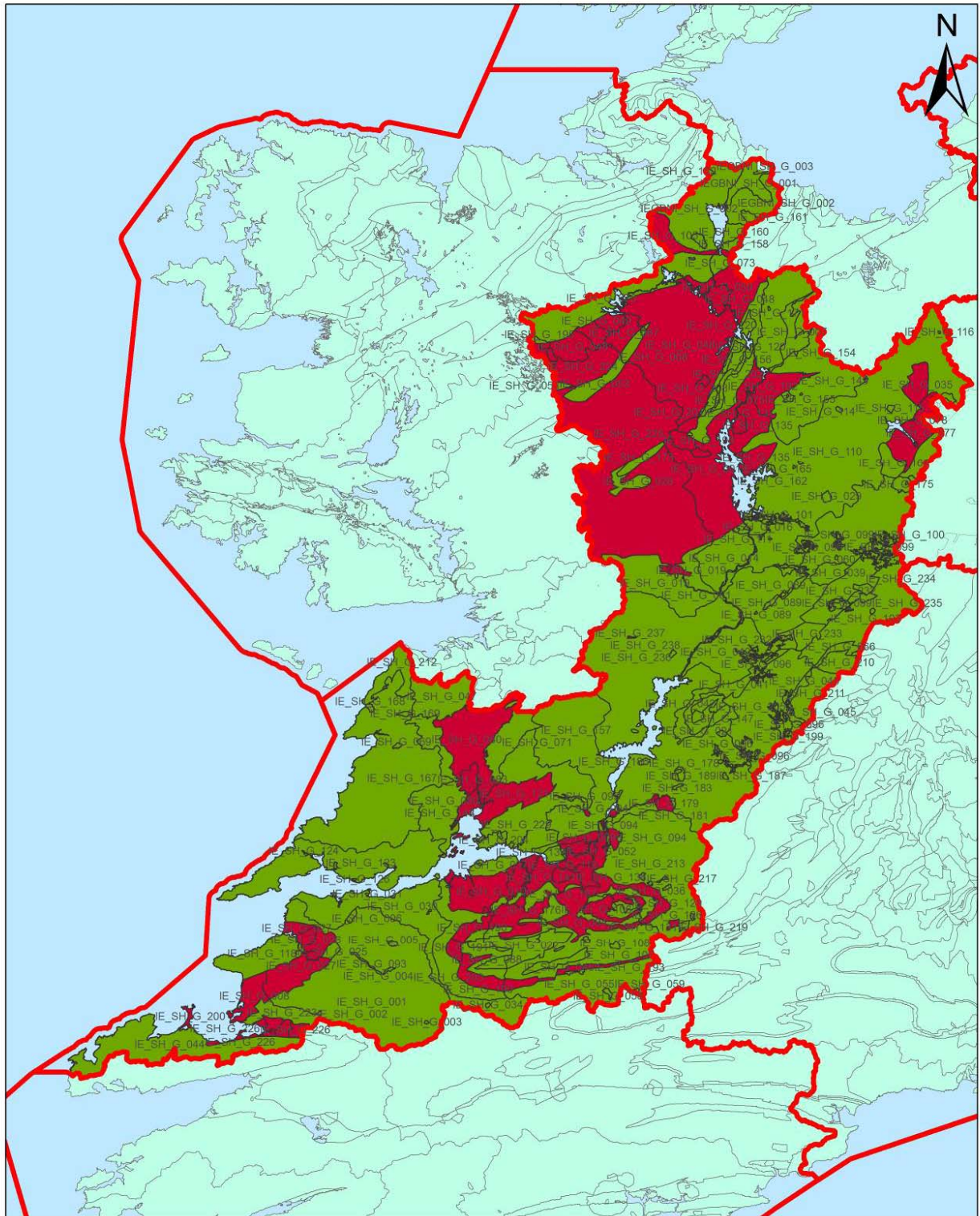
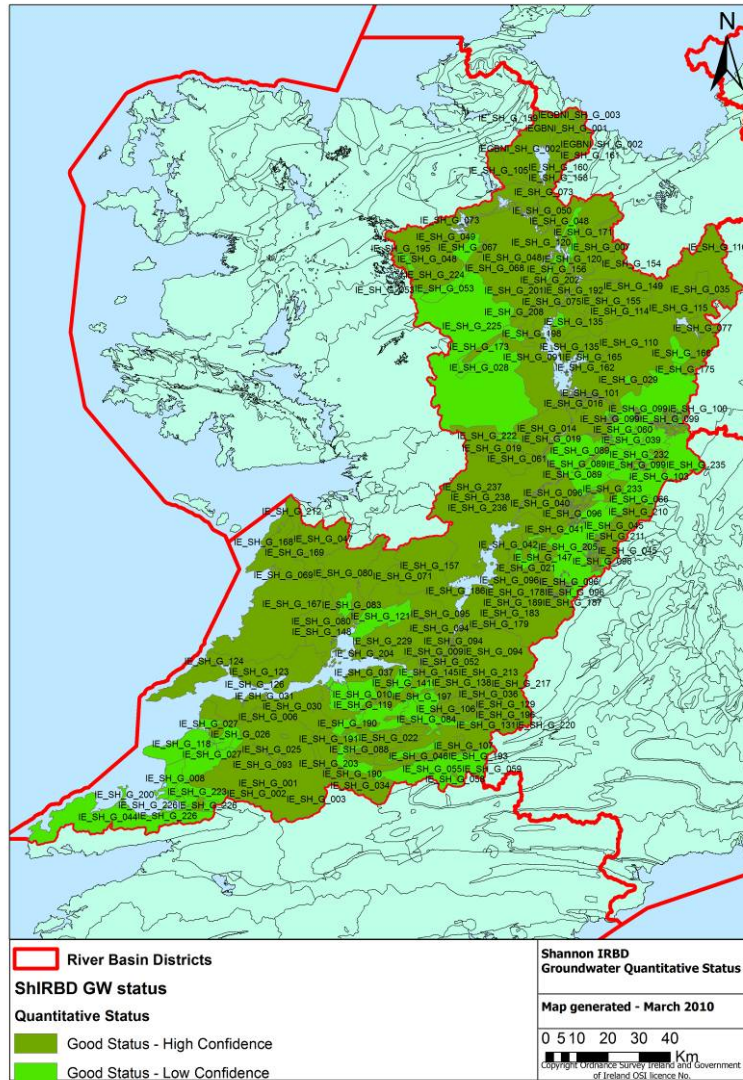


Shannon IRBD Groundwater Action Plan

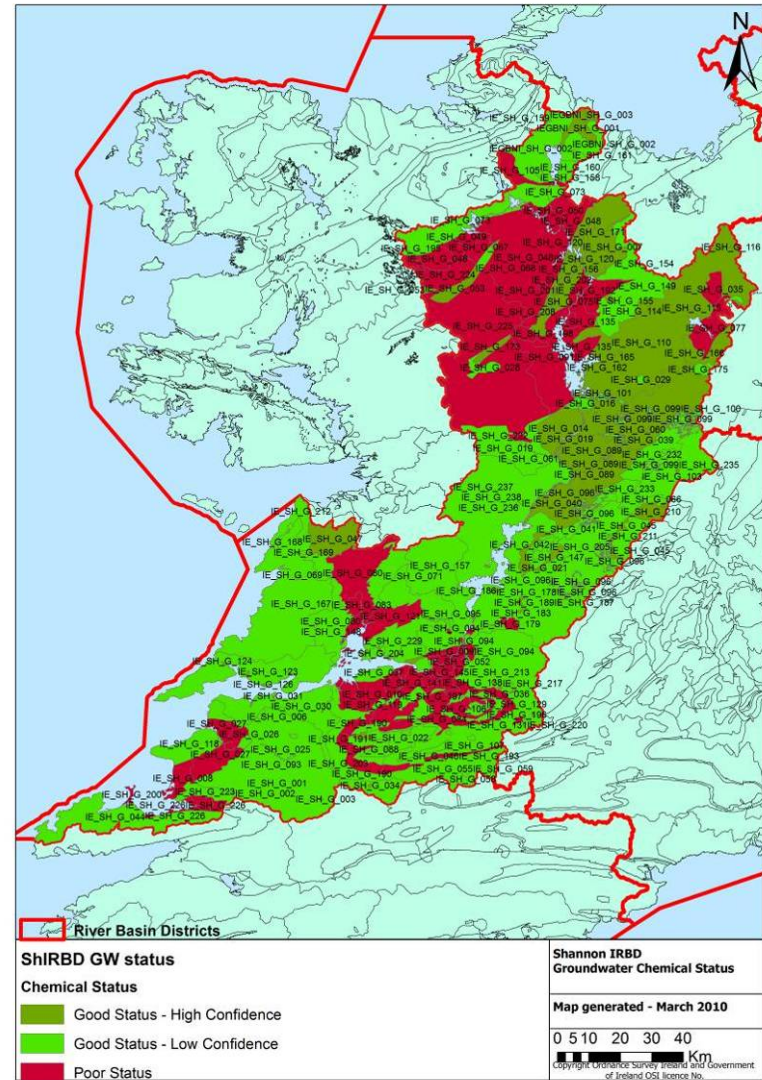


	River Basin Districts	<p>Shannon IRBD Groundwater WMU Water Mangement Unit</p> <p>Map generated - December 2009</p> <p>0 5 10 20 30 40 Km</p> <p><small>Copyright Ordnance Survey Ireland and Government of Ireland OSI licence No.</small></p>
<p>Status Classification</p> <p> Good</p> <p> Poor</p>		

Shannon IRBD Groundwater Quantitative Status



Shannon IRBD Groundwater Chemical Status



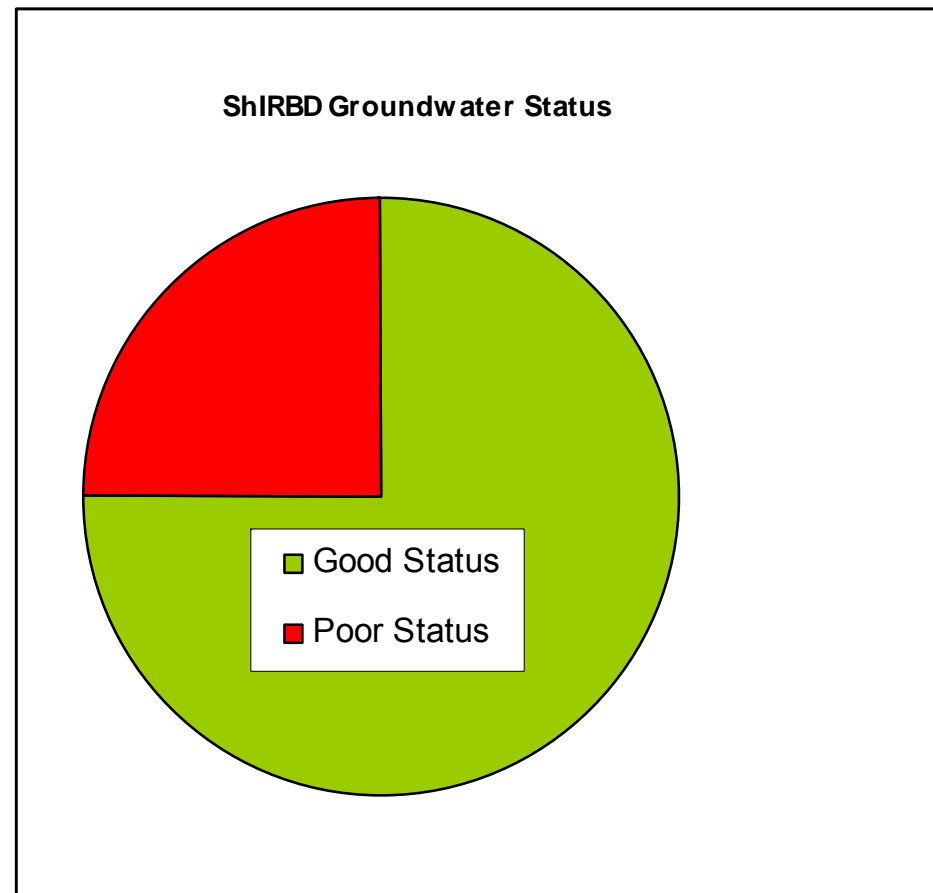
Shannon IRBD Groundwater Action Plan		
Area of Groundwater	17,607 km ²	
No of Groundwater Bodies	242	
Groundwater Protected Areas	All 242 Groundwater Bodies are classed as Drinking Water Protected Areas	
	17 Groundwater Dependent Terrestrial Ecosystems (GWDTE):	
	GWDTE	GWB Name
	Askeaton Fen Complex SAC - 2279	Askeaton, Askeaton_1,2&3
	Ballymore Fen SAC - 2313	Inny_8
	Bellanagare Bog SAC - 592	Castlerea Bellanagare_1
	Clara Bog SAC - 572	Clara_6
	Clonsalee Eskers & Derry Bog SAC - 859	Clonaslee West
	Clonsalee Eskers & Derry Bog SAC - 859 & Charleville Wood SAC - 571	Geashill
	Cloonshanville Bog SAC - 614	Carrick on Shannon_4
	Errit Lough - 607	Carrick on Shannon_5
	Fin Lough (Offaly) SAC -571	Clara
	Lisduff Fen SAC - 2147	Shinrone
	Lough Gash Turlough SAC -51	Kilkishen
	Lough Owel SAC - 688	Derravarragh_2
	Lough Ree SAC - 440	Inny_9,10,11,12
	Slieve Bloom Mountains SAC - 412	Clonaslee West_1
Tory Hill SAC - 439	Fedamore_4	
Tralee Bay & Megharees Peninsula, West to Cloghane SAC - 2070	Ardfert, Brandon Head, Rough Point, Spa, Tralee, Traless Urban	
Urular Lakes - 1571	Carrick on Shannon_6, Curlew Mountains_2	

STATUS/IMPACTS	
Overall status	Overall Groundwater Status in the ShIRBD is good. 182 GWB (75%) at Good Status; 242 GWB (100%) at Good Quantitative Status; and 60 GWB (25%) have Poor Chemical Status.
Status elements	The following elements were assessed to determine overall Groundwater Status: 1) Groundwater Quantitative Status (Quantity) <ul style="list-style-type: none"> - Abstraction i.e. Water Balance - Saline Intrusion - Dependant Surface Waters - Dependant Ecosystems 2) Groundwater Chemical Status (Quality) <ul style="list-style-type: none"> - Diffuse - Point Source - Dependant Surface Waters - Dependant Ecosystems
Possible Impacts	Point Sources <ul style="list-style-type: none"> - Closed Mine Sites (Silvermines & Tynagh) Diffuse Sources from Agriculture <ul style="list-style-type: none"> - Drinking Water (Ardfert GWB) - MRP Loading to Surface water via Groundwater Flow (55 GWB)
PRESSURES/RISKS	
<i>POINTSOURCE PRESSURES</i>	Pressure Based Risk Assessment results (2009) identify the following groundwater bodies as at risk from land based point source pressures: <u>Landfills:</u> 79 GWB at risk due to Landfills, Old Dump Site or Illegal Landfill Site identified. None at Poor Status <u>Mines:</u> 10 GWB at risk due to Old or Closed Mine Sites 3 GWB at Poor Status (2 at Silvermines and 1 at Tynagh) <u>Quarries:</u> 0 at Risk and 0 at Poor Status <u>Urban Wastewater Treatment Discharges to Groundwater</u> 1 At Risk (Miltown Malbay) 0 in Poor Status

	<p><u>Contaminated Land</u> 7 At Risk 1 in Poor Status (SlievePleim_6)</p> <p><u>Abstraction:</u> 1 GWB (Derravarragh_2) at Risk due to Abstraction None at Poor Status</p>
<i>DIFFUSE SOURCES</i>	
Agriculture	<p><u>Dependant Surface Water (Rivers):</u> 73 GWB At Risk due to contribution of Nutrient Loading (MRP) from Groundwater to Rivers at less than good ecological status. 56 of the 73 GWB in Poor Status due to contribution of Nutrient Loading (MRP) from Groundwater to Rivers at less than good ecological status.</p> <p><u>Dependant Surface Water (TRAC):</u> 13 GWB At Risk due to contribution of Nutrient Loading (Nitrogen) from Groundwater to Surface Waters (TRAC) at less than good ecological status. 0 GWB in Poor Status due to contribution of Nutrient Loading (Nitrogen) from Groundwater to Surface Waters (TRAC) at less than good ecological status.</p> <p><u>Drinking Water Quality:</u> 16 GWB At Risk due to Concentration of Contaminants in Groundwater 1 GWB (Ardfert) in Poor Status</p>
Urban	20 GWB At Risk due to Urban Pressures of Athlone, Ennis, Limerick, Mullingar, Tralee, Tullamore. 0 in Poor Status
Intrusion	1 GWB At Risk due to Saline Intrusion (Ardfert) 0 in Poor Status
Septic Tanks	High density of Septic Tanks in areas of high or extreme groundwater vulnerable or systems located in unsuitable sites can be a risk to ground water.
<i>DEPENDANT ECOSYSTEMS</i>	
	<p><u>Groundwater Dependant Terrestrial Ecosystems:</u> 28 At Risk due to Abstraction Pressures (due to Arterial Drainage) or due to Poor Groundwater Quality 0 in Poor Status</p>

SELECTED ACTION PROGRAMME	
Nitrates Action Plan	Implementation of The Nitrates Action Plan and Code of Good Agricultural Practice will reduce the level of pressure from diffuse nutrients in groundwater.
IPPC Licensing	Remediation of Contaminated Land at IPPC licensed sites will be undertaken under the direction of the specified license conditions placed on the IPPC licence by the EPA.
Septic Tanks	Implement EPA CODE OF PRACTICE Wastewater Treatment and Disposal Systems Serving Single Houses (p.e. ≤ 10

OBJECTIVES	
Year	2015 Protect 182 of GWB, Restore 2 of GWB
Alternative Objectives	58 GWB (24%) have extended deadlines <ul style="list-style-type: none"> - 53 to 2021 (due to MRP loading to rivers from GW) - 5 to 2027 (3 due to mines, 1 due to Contaminated Land & 1 due to failing drinking water protected status)



GROUNDWATER STATUS RESULTS

GWB Details		Water Balance		Diffuse Pressures				Point Source Pressures				GW Quality		Dependent Surface Waters						Dependent Ecosystems		GWB Overall Status and Objectives							
GWB Code	GWB Name	Water Balance Status	Intrusion Status	Drinking Water Status	Diffuse Status	Urban Status	Urban Risk	Laminar Risk	Quarry Risk	UWWT Risk	Contaminated Land Status	Mine Status	GW Quality Status	GW Quality Risk	MSP SW Test Status	MRA SW Test Risk	Traffic Test Status	Traffic Test Risk	SW Overall Status	SW Overall Risk	SW Quantity Status	SW Quantity Risk	GWOTE Status	GWOTE Risk	GWOTE Name	Quantitative Status	Chemical Status	Fish Status	Objective
IE SH G 001	Abbeyleale	GS-HC	GS-HC	GS-HC	GS-HC	GS-HC	NAR-HC	NAR-HC	NAR-HC	NAR-HC	GS-HC	GS-HC	GS-HC	NAR-HC	GS-LC	NAR-LC	GS-LC	NAR-LC	GS-LC	NAR-LC	GS-HC	NAR-HC	GS-HC	NAR-HC		GS-HC	GS-LC	Good	Protect
IE SH G 002	Abbeyleale 1	GS-HC	GS-HC	GS-HC	GS-HC	GS-HC	NAR-HC	AR-LC	NAR-HC	NAR-HC	GS-HC	GS-HC	GS-HC	AR-LC	GS-HC	NAR-HC	GS-LC	NAR-LC	GS-LC	NAR-LC	GS-HC	NAR-HC	GS-HC	NAR-HC		GS-HC	GS-LC	Good	Protect
IE SH G 003	Abbeyleale 2	GS-HC	GS-HC	GS-HC	GS-HC	GS-HC	NAR-HC	AR-LC	NAR-HC	NAR-HC	GS-HC	GS-HC	GS-HC	AR-LC	GS-HC	NAR-HC	GS-LC	NAR-LC	GS-LC	NAR-LC	GS-HC	NAR-HC	GS-HC	NAR-HC		GS-HC	GS-LC	Good	Protect
IE SH G 004	Abbeyleale 3	GS-HC	GS-HC	GS-HC	GS-HC	GS-HC	NAR-HC	AR-LC	NAR-HC	NAR-HC	GS-HC	GS-HC	GS-HC	AR-LC	GS-HC	NAR-HC	GS-LC	NAR-LC	GS-LC	NAR-LC	GS-HC	NAR-HC	GS-HC	NAR-HC		GS-HC	GS-LC	Good	Protect
IE SH G 005	Abbeyleale 4	GS-HC	GS-HC	GS-HC	GS-HC	GS-HC	NAR-HC	AR-LC	NAR-HC	NAR-HC	GS-HC	GS-HC	GS-HC	AR-LC	GS-LC	NAR-LC	GS-LC	NAR-LC	GS-LC	NAR-LC	GS-HC	NAR-HC	GS-HC	NAR-HC		GS-HC	GS-LC	Good	Protect
IE SH G 006	Abbeyleale 5	GS-HC	GS-HC	GS-HC	GS-HC	GS-HC	NAR-HC	AR-LC	NAR-HC	NAR-HC	GS-HC	GS-HC	GS-HC	AR-LC	GS-LC	NAR-LC	GS-LC	NAR-LC	GS-LC	NAR-LC	GS-HC	NAR-HC	GS-HC	NAR-HC		GS-HC	GS-LC	Good	Protect
IE SH G 007	Annaghmore	GS-HC	GS-HC	GS-HC	GS-HC	GS-HC	NAR-HC	NAR-HC	NAR-HC	NAR-HC	GS-HC	GS-HC	GS-HC	NAR-HC	GS-HC	NAR-HC	GS-HC	NAR-HC	GS-HC	NAR-HC	GS-HC	NAR-HC	GS-HC	NAR-HC		GS-HC	GS-HC	Good	Protect
IE SH G 008	Ardfert	GS-HC	GS-LC	Poor	GS-HC	GS-HC	NAR-HC	NAR-HC	NAR-HC	NAR-HC	GS-HC	GS-HC	GS-HC	NAR-LC	Poor	AR-HC	GS-HC	NAR-HC	Poor	AR-HC	GS-HC	NAR-HC	GS-LC	AR-LC	SAC - 2070	GS-LC	Poor	Poor	Restore 2027
IE SH G 009	Ardnacrusha	GS-HC	GS-HC	GS-HC	GS-HC	GS-HC	NAR-HC	NAR-HC	NAR-HC	NAR-HC	GS-HC	GS-HC	GS-HC	NAR-LC	Poor	AR-HC	GS-HC	NAR-HC	Poor	AR-HC	GS-HC	NAR-HC	GS-LC	AR-LC		GS-HC	GS-LC	Good	Protect
IE SH G 010	Askeaton	GS-HC	GS-HC	GS-LC	GS-HC	GS-HC	NAR-HC	NAR-HC	NAR-LC	NAR-HC	GS-LC	GS-HC	GS-LC	AR-HC	Poor	AR-HC	GS-LC	NAR-LC	Poor	AR-HC	GS-HC	NAR-HC	GS-LC	AR-LC	SAC - 2279	GS-LC	Poor	Poor	Restore 2021
IE SH G 011	Askeaton 1	GS-HC	GS-HC	GS-HC	GS-HC	GS-HC	NAR-HC	AR-LC	NAR-HC	NAR-HC	GS-HC	GS-HC	GS-HC	AR-LC	Poor	AR-HC	GS-LC	NAR-LC	Poor	AR-HC	GS-HC	NAR-HC	GS-LC	AR-LC	SAC - 2279	GS-LC	Poor	Poor	Restore 2021
IE SH G 012	Askeaton 2	GS-HC	GS-HC	GS-HC	GS-HC	GS-HC	NAR-HC	AR-LC	NAR-HC	NAR-HC	GS-HC	GS-HC	GS-HC	AR-LC	Poor	AR-HC	GS-LC	NAR-LC	Poor	AR-HC	GS-HC	NAR-HC	GS-LC	AR-LC	SAC - 2279	GS-LC	Poor	Poor	Restore 2021
IE SH G 013	Askeaton 3	GS-HC	GS-HC	GS-HC	GS-HC	GS-HC	NAR-HC	AR-LC	NAR-HC	NAR-HC	GS-HC	GS-HC	GS-HC	AR-LC	Poor	AR-HC	GS-LC	NAR-LC	Poor	AR-HC	GS-HC	NAR-HC	GS-LC	AR-LC	SAC - 2279	GS-LC	Poor	Poor	Restore 2021
IE SH G 014	Athlone West	GS-HC	GS-HC	GS-HC	GS-HC	GS-HC	NAR-HC	NAR-HC	NAR-HC	NAR-HC	GS-HC	GS-HC	GS-HC	NAR-LC	Poor	AR-HC	GS-HC	NAR-HC	Poor	AR-HC	GS-HC	NAR-HC	GS-LC	AR-LC		GS-HC	GS-HC	Good	Protect
IE SH G 015	AthloneWest 2	GS-HC	GS-HC	GS-HC	GS-HC	GS-LC	AR-LC	NAR-HC	NAR-HC	NAR-HC	GS-HC	GS-HC	GS-LC	AR-LC	GS-HC	NAR-HC	GS-HC	NAR-HC	GS-HC	NAR-HC	GS-HC	NAR-HC	GS-HC	NAR-HC		GS-HC	GS-LC	Good	Protect
IE SH G 016	Athloneurban e	GS-HC	GS-HC	GS-HC	GS-HC	GS-LC	AR-LC	NAR-HC	NAR-HC	NAR-HC	GS-HC	GS-HC	GS-LC	AR-LC	GS-HC	NAR-HC	GS-HC	NAR-HC	GS-HC	NAR-HC	GS-HC	NAR-HC	GS-HC	NAR-HC		GS-HC	GS-LC	Good	Protect
IE SH G 017	Athloneurban w	GS-HC	GS-HC	GS-HC	GS-HC	GS-LC	AR-LC	NAR-HC	NAR-HC	NAR-HC	GS-HC	GS-HC	GS-LC	AR-LC	GS-HC	NAR-HC	GS-HC	NAR-HC	GS-HC	NAR-HC	GS-HC	NAR-HC	GS-HC	NAR-HC		GS-HC	GS-LC	Good	Protect
IE SH G 018	Athlonewest 1	GS-HC	GS-HC	GS-HC	GS-HC	GS-LC	AR-LC	NAR-HC	NAR-HC	NAR-HC	GS-LC	GS-HC	GS-LC	AR-HC	GS-HC	NAR-HC	GS-HC	NAR-HC	GS-HC	NAR-HC	GS-HC	NAR-HC	GS-HC	NAR-HC		GS-HC	GS-LC	Good	Protect
IE SH G 019	Aughrim	GS-HC	GS-HC	GS-HC	GS-HC	GS-HC	NAR-HC	NAR-HC	NAR-HC	NAR-HC	GS-HC	GS-HC	GS-HC	NAR-HC	GS-HC	NAR-HC	GS-LC	NAR-LC	GS-HC	NAR-HC	GS-LC	NAR-LC	GS-HC	NAR-HC		GS-HC	GS-LC	Good	Protect
IE SH G 020	Aughrim 1	GS-HC	GS-HC	GS-HC	GS-HC	GS-HC	NAR-HC	AR-LC	NAR-HC	NAR-HC	GS-HC	GS-HC	GS-HC	AR-LC	GS-LC	NAR-LC	GS-HC	NAR-HC	GS-LC	NAR-LC	GS-HC	NAR-HC	GS-HC	NAR-HC		GS-HC	GS-LC	Good	Protect
IE SH G 021	Ballinderry	GS-LC	GS-HC	GS-LC	GS-HC	GS-HC	NAR-HC	NAR-HC	NAR-HC	NAR-HC	GS-HC	GS-HC	GS-HC	NAR-LC	GS-HC	NAR-HC	GS-HC	NAR-HC	GS-HC	NAR-HC	GS-HC	NAR-HC	GS-HC	NAR-HC		GS-LC	GS-LC	Good	Protect
IE SH G 022	Ballingarry	GS-HC	GS-HC	GS-LC	GS-HC	GS-HC	NAR-HC	NAR-HC	NAR-HC	NAR-HC	GS-HC	GS-LC	GS-LC	AR-LC	GS-LC	AR-HC	GS-LC	AR-HC	GS-LC	AR-HC	GS-HC	NAR-HC	GS-HC	NAR-HC		GS-HC	GS-LC	Good	Protect
IE SH G 023	Ballingarry 1	GS-HC	GS-HC	GS-HC	GS-HC	GS-HC	NAR-HC	AR-LC	NAR-HC	NAR-HC	GS-HC	GS-HC	GS-HC	AR-LC	GS-HC	NAR-HC	GS-LC	AR-HC	GS-LC	AR-HC	GS-HC	NAR-HC	GS-HC	NAR-HC		GS-HC	GS-LC	Good	Protect
IE SH G 024	Ballyallinan	GS-HC	GS-HC	GS-HC	GS-HC	GS-HC	NAR-HC	NAR-HC	NAR-HC	NAR-HC	GS-HC	GS-HC	GS-HC	NAR-LC	GS-LC	NAR-LC	GS-HC	NAR-HC	GS-LC	NAR-LC	GS-HC	NAR-HC	GS-HC	NAR-HC		GS-HC	GS-LC	Good	Protect
IE SH G 025	Ballybunion 1	GS-LC	GS-HC	GS-HC	GS-HC	GS-HC	NAR-HC	AR-LC	NAR-HC	NAR-HC	GS-LC	GS-HC	GS-LC	AR-LC	GS-HC	NAR-HC	GS-LC	NAR-LC	GS-LC	NAR-LC	GS-HC	NAR-HC	GS-HC	NAR-HC		GS-LC	GS-LC	Good	Protect
IE SH G 026	Ballybunion 2	GS-HC	GS-HC	GS-HC	GS-HC	GS-HC	NAR-HC	AR-LC	NAR-HC	NAR-HC	GS-HC	GS-HC	GS-HC	AR-LC	Poor	AR-HC	GS-LC	NAR-LC	Poor	AR-HC	GS-HC	NAR-HC	GS-HC	NAR-HC		GS-HC	Poor	Poor	Restore 2021
IE SH G 027	Ballybunion 3	GS-HC	GS-LC	GS-LC	GS-HC	GS-HC	NAR-HC	NAR-HC	NAR-HC	NAR-HC	GS-HC	GS-HC	GS-HC	NAR-LC	Poor	AR-HC	GS-LC	NAR-LC	Poor	AR-HC	GS-HC	NAR-HC	GS-HC	NAR-HC		GS-LC	Poor	Poor	Restore 2021
IE SH G 028	Ballygar	GS-LC	GS-HC	GS-HC	GS-HC	GS-HC	NAR-HC	NAR-HC	NAR-HC	NAR-HC	GS-HC	GS-HC	GS-HC	NAR-HC	GS-LC	NAR-LC	GS-HC	NAR-HC	GS-LC	NAR-LC	GS-HC	NAR-HC	GS-HC	NAR-HC		GS-LC	GS-LC	Good	Protect
IE SH G 029	Inny 8	GS-HC	GS-HC	GS-HC	GS-HC	GS-HC	NAR-HC	NAR-HC	NAR-HC	NAR-HC	GS-HC	GS-HC	GS-HC	NAR-LC	GS-LC	AR-LC	GS-HC	NAR-HC	GS-HC	NAR-HC	GS-HC	NAR-HC	GS-LC	AR-LC	SAC - 2313	GS-LC	GS-LC	Good	Protect
IE SH G 030	Ballylongford	GS-HC	GS-HC	GS-LC	GS-HC	GS-HC	NAR-HC	NAR-HC	NAR-HC	NAR-HC	GS-HC	GS-HC	GS-HC	NAR-HC	GS-LC	NAR-LC	GS-HC	NAR-HC	GS-LC	NAR-LC	GS-HC	NAR-HC	GS-HC	NAR-HC		GS-HC	GS-LC	Good	Protect
IE SH G 031	Ballylongford 1	GS-HC	GS-HC	GS-HC	GS-HC	GS-HC	NAR-HC	NAR-HC	NAR-HC	NAR-HC	GS-HC	GS-HC	GS-HC	NAR-HC	GS-LC	NAR-LC	GS-HC	NAR-HC	GS-LC	NAR-LC	GS-HC	NAR-HC	GS-HC	NAR-HC		GS-HC	GS-HC	Good	Protect
IE SH G 032	Ballylongford 2	GS-HC	GS-HC	GS-HC	GS-HC	GS-HC	NAR-HC	AR-LC	NAR-HC	NAR-HC	GS-HC	GS-HC	GS-HC	AR-LC	GS-LC	NAR-LC	GS-HC	NAR-HC	GS-LC	NAR-LC	GS-HC	NAR-HC	GS-HC	NAR-HC		GS-HC	GS-LC	Good	Protect
IE SH G 033	Ballylongford 3	GS-HC	GS-HC	GS-HC	GS-HC	GS-HC	NAR-HC	AR-LC	NAR-HC	NAR-HC	GS-HC	GS-HC	GS-HC	AR-LC	GS-HC	NAR-HC	GS-HC	NAR-HC	GS-HC	NAR-HC	GS-HC	NAR-HC	GS-HC	NAR-HC		GS-HC	GS-HC	Good	Protect
IE SH G 034	Ballylongford 4	GS-HC	GS-HC	GS-HC	GS-HC	GS-HC	NAR-HC	AR-LC	NAR-HC	NAR-HC	GS-HC	GS-HC	GS-HC	AR-LC	GS-HC	NAR-HC	GS-HC	NAR-HC	GS-HC	NAR-HC	GS-HC	NAR-HC	GS-HC	NAR-HC		GS-HC	GS-HC	Good	Protect
IE SH G 035	Ballymanus	GS-HC	GS-HC	GS-HC	GS-HC	GS-HC	NAR-HC	NAR-HC	NAR-HC	NAR-HC	GS-HC	GS-HC	GS-HC	NAR-LC	Poor	AR-HC	GS-HC	NAR-HC	Poor	AR-HC	GS-HC	NAR-HC	GS-HC	NAR-HC		GS-HC	Poor	Poor	Restore 2021
IE SH G 036	Ballyneety	GS-HC	GS-HC	GS-LC	GS-HC	GS-HC	NAR-HC	NAR-HC	NAR-HC	NAR-HC	GS-HC	GS-HC	GS-HC	NAR-LC	Poor	AR-HC	GS-HC	NAR-HC	Poor	AR-HC	GS-HC	NAR-HC	GS-HC	NAR-HC		GS-HC	Poor	Poor	Restore 2021
IE SH G 037	Ballysteen	GS-HC	GS-HC	GS-HC	GS-HC	GS-HC	NAR-HC	NAR-HC	NAR-HC	NAR-HC	GS-HC	GS-HC	GS-HC	NAR-LC	GS-LC	NAR-LC	GS-HC	NAR-HC	GS-LC	NAR-LC	GS-HC	NAR-HC	GS-HC	NAR-HC		GS-HC	GS-LC	Good	Protect
IE SH G 038	Ballysteen 1	GS-HC	GS-HC	GS-HC	GS-HC	GS-HC	NAR-HC	AR-LC	NAR-HC	NAR-HC	GS-HC	GS-HC	GS-HC	AR-LC	GS-HC	NAR-HC	GS-HC	NAR-HC	GS-HC	NAR-HC	GS-HC	NAR-HC	GS-HC	NAR-HC		GS-HC	GS-HC	Good	Protect
IE SH G 039	Clara 6	GS-HC	GS-HC	GS-HC	GS-HC	GS-HC	NAR-HC	NAR-HC	NAR-HC	NAR-HC	GS-HC	GS-HC	GS-HC	NAR-LC	GS-HC	NAR-HC	GS-HC	NAR-HC	GS-HC	NAR-HC	GS-HC	NAR-HC	GS-LC	AR-LC	SAC - 572	GS-LC	GS-HC	Good	Protect

GROUNDWATER STATUS RESULTS CONTINUED.

GWB Code	GWB Details		Water Balance		Diffuse Pressures			Point Source Pressures				GW Quality		Dependent Surface Waters						Dependent Ecosystems			GWB Overall Status and Objectives							
	GWB Name		Water Balance Status	Intrusion Status	Drinking Water Status	Diffuse Status	Urban Status	Urban Risk	Landfill Risk	Quarry Risk	UWWT Risk	Contaminated Land Status	Mine Status	GW Quality Status	GW Quality Risk	MSP SW Test Status	MPS SW Test Risk	Trac Test Status	Trac Test Risk	SW Overall Status	SW Overall Risk	SW Quantity Status	SW Quantity Risk	GWQTE Status	GWQTE Risk	GWQTE Name	Quantitative Status	Chemical Status	Fungal Status	Objective
IE SH G 039	Clara 6		GS-HC	GS-HC	GS-HC	GS-HC	GS-HC	NAR-HC	NAR-HC	NAR-HC	NAR-HC	GS-HC	GS-HC	GS-HC	NAR-LC	GS-HC	NAR-HC	GS-HC	NAR-HC	GS-HC	NAR-HC	GS-HC	NAR-HC	GS-LC	AR-LC	SAC - 572	GS-LC	GS-HC	Good	Protect
IE SH G 040	Banagher		GS-HC	GS-HC	GS-HC	GS-HC	GS-HC	NAR-HC	NAR-HC	NAR-HC	NAR-HC	GS-HC	GS-HC	GS-HC	NAR-LC	GS-HC	NAR-HC	GS-HC	NAR-HC	GS-HC	NAR-HC	GS-HC	NAR-HC	GS-HC	NAR-HC		GS-HC	GS-HC	Good	Protect
IE SH G 041	Birr		GS-HC	GS-HC	GS-HC	GS-LC	GS-HC	NAR-HC	NAR-HC	NAR-HC	NAR-HC	GS-HC	GS-HC	GS-LC	AR-HC	GS-LC	AR-LC	GS-HC	NAR-HC	GS-LC	AR-LC	GS-HC	NAR-HC	GS-HC	NAR-HC		GS-HC	GS-LC	Good	Protect
IE SH G 042	Borrisokane		GS-HC	GS-HC	GS-HC	GS-LC	GS-HC	NAR-HC	NAR-HC	NAR-HC	NAR-HC	GS-HC	GS-HC	GS-LC	AR-HC	GS-LC	AR-LC	GS-HC	NAR-HC	GS-LC	AR-LC	GS-HC	NAR-HC	GS-HC	NAR-HC		GS-HC	GS-LC	Good	Protect
IE SH G 043	Borrisokane 1		GS-HC	GS-HC	GS-HC	GS-LC	GS-HC	NAR-HC	AR-LC	NAR-HC	NAR-HC	GS-HC	GS-HC	GS-LC	AR-HC	GS-LC	AR-LC	GS-HC	NAR-HC	GS-LC	AR-LC	GS-HC	NAR-HC	GS-HC	NAR-HC		GS-HC	GS-LC	Good	Protect
IE SH G 044	Brandon Head		GS-HC	GS-LC	GS-HC	GS-HC	GS-HC	NAR-HC	AR-LC	NAR-HC	NAR-HC	GS-HC	GS-HC	NAR-LC	NAR-LC	NAR-LC	GS-HC	NAR-HC	GS-HC	NAR-HC	GS-LC	AR-LC	GS-HC	NAR-HC	GS-LC	SAC - 2070	GS-LC	GS-LC	Good	Protect
IE SH G 045	Bredagh		GS-HC	GS-HC	GS-HC	GS-HC	GS-HC	NAR-HC	NAR-HC	NAR-HC	NAR-HC	GS-HC	GS-HC	GS-HC	NAR-LC	GS-HC	NAR-HC	GS-HC	NAR-HC	GS-HC	NAR-HC	GS-HC	NAR-HC	GS-HC	NAR-HC		GS-HC	GS-HC	Good	Protect
IE SH G 046	Bruree		GS-HC	GS-LC	GS-HC	GS-HC	GS-HC	NAR-HC	NAR-HC	NAR-HC	NAR-HC	GS-HC	GS-HC	GS-HC	NAR-LC	GS-HC	NAR-HC	GS-LC	AR-HC	GS-LC	AR-HC	GS-HC	NAR-HC	GS-HC	NAR-HC		GS-LC	GS-LC	Good	Protect
IE SH G 047	Burren		GS-HC	GS-HC	GS-HC	GS-HC	GS-HC	NAR-HC	NAR-HC	NAR-HC	NAR-HC	GS-HC	GS-HC	GS-HC	NAR-HC	GS-HC	NAR-HC	GS-HC	NAR-HC	GS-HC	NAR-HC	GS-HC	NAR-HC	GS-HC	NAR-HC		GS-HC	GS-HC	Good	Protect
IE SH G 048	Carrick on Shannon		GS-HC	GS-HC	GS-LC	GS-HC	GS-HC	NAR-HC	NAR-HC	NAR-HC	NAR-HC	GS-HC	GS-HC	GS-HC	NAR-LC	Poor	AR-HC	GS-HC	NAR-HC	Poor	AR-HC	GS-HC	NAR-HC	GS-HC	NAR-HC		GS-HC	Poor	Poor	Restore 2021
IE SH G 049	CarrickonShannon 1		GS-HC	GS-HC	GS-HC	GS-HC	GS-HC	NAR-HC	AR-LC	NAR-HC	NAR-HC	GS-HC	GS-HC	GS-HC	AR-LC	Poor	AR-HC	GS-HC	NAR-HC	Poor	AR-HC	GS-HC	NAR-HC	GS-HC	NAR-HC		GS-HC	Poor	Poor	Restore 2021
IE SH G 050	CarrickonShannon 2		GS-HC	GS-HC	GS-HC	GS-HC	GS-HC	NAR-HC	AR-LC	NAR-HC	NAR-HC	GS-HC	GS-HC	GS-HC	AR-LC	Poor	AR-HC	GS-HC	NAR-HC	Poor	AR-HC	GS-HC	NAR-HC	GS-HC	NAR-HC		GS-HC	Poor	Poor	Restore 2021
IE SH G 051	CarrickonShannon 3		GS-HC	GS-HC	GS-HC	GS-HC	GS-HC	NAR-HC	AR-LC	NAR-HC	NAR-HC	GS-HC	GS-HC	GS-HC	AR-LC	Poor	AR-HC	GS-HC	NAR-HC	Poor	AR-HC	GS-HC	NAR-HC	GS-HC	NAR-HC		GS-HC	Poor	Poor	Restore 2021
IE SH G 052	Castleconnell		GS-HC	GS-HC	GS-HC	GS-HC	GS-HC	NAR-HC	NAR-HC	NAR-HC	NAR-HC	GS-HC	GS-HC	GS-HC	NAR-LC	Poor	AR-HC	GS-HC	NAR-HC	Poor	AR-HC	GS-HC	NAR-HC	GS-HC	NAR-HC		GS-HC	Poor	Poor	Restore 2021
IE SH G 053	Castlere		GS-LC	GS-HC	GS-HC	GS-HC	GS-HC	NAR-HC	AR-LC	NAR-HC	NAR-HC	GS-HC	GS-HC	GS-HC	NAR-HC	GS-HC	NAR-HC	GS-HC	NAR-HC	GS-HC	NAR-HC	GS-HC	NAR-HC	GS-HC	NAR-HC		GS-LC	GS-HC	Good	Protect
IE SH G 054	Castlere Bellanagare		GS-HC	GS-HC	GS-HC	GS-HC	GS-HC	NAR-HC	NAR-HC	NAR-HC	NAR-HC	GS-HC	GS-HC	GS-HC	NAR-HC	GS-HC	NAR-HC	GS-HC	NAR-HC	GS-HC	NAR-HC	GS-HC	NAR-HC	GS-HC	NAR-HC		GS-HC	GS-HC	Good	Protect
IE SH G 055	Charleville		GS-LC	GS-HC	GS-HC	GS-HC	GS-HC	NAR-HC	NAR-HC	NAR-HC	NAR-HC	GS-HC	GS-HC	GS-HC	NAR-LC	GS-LC	NAR-LC	GS-LC	NAR-LC	GS-LC	NAR-LC	GS-HC	NAR-HC	GS-HC	NAR-HC		GS-LC	GS-LC	Good	Protect
IE SH G 056	Charleville 1		GS-HC	GS-HC	GS-HC	GS-HC	GS-HC	NAR-HC	AR-LC	NAR-HC	NAR-HC	GS-HC	GS-HC	GS-HC	AR-LC	GS-HC	NAR-HC	GS-LC	NAR-LC	GS-LC	NAR-LC	GS-HC	NAR-HC	GS-HC	NAR-HC		GS-HC	GS-LC	Good	Protect
IE SH G 057	Charleville 2		GS-HC	GS-HC	GS-HC	GS-HC	GS-HC	NAR-HC	AR-LC	NAR-HC	NAR-HC	GS-HC	GS-HC	GS-HC	AR-LC	GS-HC	NAR-HC	GS-LC	NAR-LC	GS-LC	NAR-LC	GS-HC	NAR-HC	GS-HC	NAR-HC		GS-HC	GS-LC	Good	Protect
IE SH G 058	Charleville 3		GS-HC	GS-HC	GS-HC	GS-HC	GS-HC	NAR-HC	NAR-HC	NAR-HC	NAR-HC	GS-HC	GS-HC	GS-HC	NAR-LC	GS-HC	NAR-HC	GS-LC	NAR-LC	GS-LC	NAR-LC	GS-HC	NAR-HC	GS-HC	NAR-HC		GS-HC	GS-LC	Good	Protect
IE SH G 059	Charleville 4		GS-HC	GS-HC	GS-HC	GS-HC	GS-HC	NAR-HC	AR-LC	NAR-HC	NAR-HC	GS-HC	GS-HC	GS-HC	AR-LC	GS-HC	NAR-HC	GS-LC	NAR-LC	GS-LC	NAR-LC	GS-HC	NAR-HC	GS-HC	NAR-HC		GS-HC	GS-LC	Good	Protect
IE SH G 060	Clara		GS-HC	GS-HC	GS-HC	GS-HC	GS-HC	NAR-HC	NAR-HC	NAR-HC	NAR-HC	GS-HC	GS-HC	GS-HC	NAR-LC	GS-HC	NAR-HC	GS-HC	NAR-HC	GS-HC	NAR-HC	GS-HC	NAR-HC	GS-LC	AR-LC	SAC -571	GS-LC	GS-HC	Good	Protect
IE SH G 061	Clara 1		GS-HC	GS-HC	GS-HC	GS-HC	GS-HC	NAR-HC	NAR-HC	NAR-HC	NAR-HC	GS-HC	GS-HC	GS-HC	NAR-LC	GS-HC	NAR-HC	GS-HC	NAR-HC	GS-HC	NAR-HC	GS-HC	NAR-HC	GS-HC	NAR-HC		GS-HC	GS-HC	Good	Protect
IE SH G 062	Clara 2		GS-HC	GS-HC	GS-HC	GS-HC	GS-HC	NAR-HC	AR-LC	NAR-HC	NAR-HC	GS-HC	GS-HC	GS-HC	AR-LC	GS-HC	NAR-HC	GS-HC	NAR-HC	GS-HC	NAR-HC	GS-HC	NAR-HC	GS-HC	NAR-HC		GS-HC	GS-HC	Good	Protect
IE SH G 063	Clara 3		GS-HC	GS-HC	GS-HC	GS-HC	GS-HC	NAR-HC	AR-LC	NAR-HC	NAR-HC	GS-HC	GS-HC	GS-HC	AR-LC	GS-HC	NAR-HC	GS-HC	NAR-HC	GS-HC	NAR-HC	GS-HC	NAR-HC	GS-HC	NAR-HC		GS-HC	GS-HC	Good	Protect
IE SH G 064	Clara 4		GS-HC	GS-HC	GS-HC	GS-HC	GS-LC	AR-LC	NAR-HC	NAR-HC	NAR-HC	GS-HC	GS-HC	GS-LC	AR-LC	GS-HC	NAR-HC	GS-HC	NAR-HC	GS-HC	NAR-HC	GS-HC	NAR-HC	GS-HC	NAR-HC		GS-HC	GS-LC	Good	Protect
IE SH G 065	Clara 5		GS-HC	GS-HC	GS-HC	GS-HC	GS-HC	NAR-HC	AR-LC	NAR-HC	NAR-HC	GS-HC	GS-HC	GS-HC	AR-LC	GS-HC	NAR-HC	GS-HC	NAR-HC	GS-HC	NAR-HC	GS-HC	NAR-HC	GS-HC	NAR-HC		GS-HC	GS-HC	Good	Protect
IE SH G 066	Clonasslee West		GS-HC	GS-HC	GS-LC	GS-HC	GS-HC	NAR-HC	NAR-HC	NAR-HC	NAR-HC	GS-HC	GS-HC	GS-HC	NAR-LC	GS-HC	NAR-HC	GS-HC	NAR-HC	GS-HC	NAR-HC	GS-HC	NAR-HC	GS-LC	AR-LC	SAC - 859	GS-LC	GS-LC	Good	Protect
IE SH G 067	Carrick on Shannon 4		GS-HC	GS-HC	GS-HC	GS-HC	GS-HC	NAR-HC	NAR-HC	NAR-HC	NAR-HC	GS-HC	GS-HC	GS-HC	NAR-LC	Poor	AR-HC	GS-HC	NAR-HC	Poor	AR-HC	GS-HC	NAR-HC	GS-LC	AR-LC	SAC - 614	GS-LC	Poor	Poor	Restore 2021
IE SH G 068	Castlere Bellanagare 1		GS-HC	GS-HC	GS-HC	GS-HC	GS-HC	NAR-HC	NAR-HC	NAR-HC	NAR-HC	GS-HC	GS-HC	GS-HC	NAR-HC	GS-LC	NAR-LC	GS-HC	NAR-HC	GS-LC	NAR-LC	GS-HC	NAR-HC	GS-HC	NAR-LC	SAC - 592	GS-HC	GS-LC	Good	Protect
IE SH G 069	Craggaunboy		GS-HC	GS-HC	GS-HC	GS-HC	GS-HC	NAR-HC	NAR-HC	NAR-HC	NAR-HC	GS-HC	GS-HC	GS-HC	NAR-HC	GS-LC	NAR-LC	GS-HC	NAR-HC	GS-LC	NAR-LC	GS-HC	NAR-HC	GS-HC	NAR-HC		GS-HC	GS-LC	Good	Protect
IE SH G 070	Cratloe		GS-HC	GS-HC	GS-HC	GS-HC	GS-HC	NAR-HC	NAR-HC	NAR-HC	NAR-HC	GS-HC	GS-HC	GS-HC	NAR-LC	GS-HC	NAR-HC	GS-HC	NAR-HC	GS-HC	NAR-HC	GS-HC	NAR-HC	GS-HC	NAR-HC		GS-HC	GS-HC	Good	Protect
IE SH G 071	Crusheen		GS-HC	GS-HC	GS-HC	GS-HC	GS-HC	NAR-HC	NAR-HC	NAR-HC	NAR-HC	GS-HC	GS-HC	GS-HC	NAR-LC	GS-LC	NAR-LC	GS-HC	NAR-HC	GS-LC	NAR-LC	GS-HC	NAR-HC	GS-HC	NAR-HC		GS-HC	GS-LC	Good	Protect
IE SH G 072	Carrick on Shannon 5		GS-HC	GS-HC	GS-HC	GS-HC	GS-HC	NAR-HC	NAR-HC	NAR-HC	NAR-HC	GS-HC	GS-HC	GS-HC	NAR-LC	Poor	AR-HC	GS-HC	NAR-HC	Poor	AR-HC	GS-HC	NAR-HC	GS-LC	AR-LC	SAC - 607	GS-LC	Poor	Poor	Restore 2015
IE SH G 073	Curlew Mountains		GS-HC	GS-HC	GS-HC	GS-HC	GS-HC	NAR-HC	NAR-HC	NAR-HC	NAR-HC	GS-HC	GS-HC	GS-HC	NAR-HC	GS-LC	NAR-LC	GS-HC	NAR-HC	GS-LC	NAR-LC	GS-HC	NAR-HC	GS-HC	NAR-HC		GS-HC	GS-LC	Good	Protect
IE SH G 074	Curlew 1		GS-HC	GS-HC	GS-HC	GS-HC	GS-HC	NAR-HC	NAR-HC	NAR-HC	NAR-HC	GS-HC	GS-HC	GS-HC	NAR-HC	GS-HC	NAR-HC	GS-HC	NAR-HC	GS-HC	NAR-HC	GS-HC	NAR-HC	GS-HC	NAR-HC		GS-HC	GS-HC	Good	Protect
IE SH G 075	Curraghroe		GS-HC	GS-HC	GS-HC	GS-HC	GS-HC	NAR-HC	NAR-HC	NAR-HC	NAR-HC	GS-HC	GS-HC	GS-HC	NAR-LC	GS-HC	NAR-HC	GS-HC	NAR-HC	GS-HC	NAR-HC	GS-HC	NAR-HC	GS-HC	NAR-HC		GS-HC	GS-HC	Good	Protect
IE SH G 076	Curraghroe 1		GS-HC	GS-HC	GS-HC	GS-HC	GS-HC	NAR-HC	AR-LC	NAR-HC	NAR-HC	GS-HC	GS-HC	GS-HC	AR-LC	GS-HC	NAR-HC	GS-HC	NAR-HC	GS-LC	NAR-LC	GS-HC	NAR-HC	GS-HC	NAR-HC		GS-HC	GS-HC	Good	Protect
IE SH G 077	Derravarragh		GS-HC	GS-HC	GS-HC	GS-HC	GS-HC	NAR-HC	NAR-HC	NAR-HC	NAR-HC	GS-HC	GS-HC	GS-HC	NAR-LC	Poor	AR-HC	GS-HC	NAR-HC	Poor	AR-HC	GS-HC	NAR-HC	GS-HC	NAR-HC		GS-HC	Poor	Poor	Restore 2021
IE SH G 078	Derravarragh 1		GS-HC	GS-HC	GS-HC	GS-HC	GS-HC	NAR-HC	AR-LC	NAR-HC	NAR-HC	GS-HC	GS-HC	GS-HC	AR-LC	Poor	AR-HC	GS-HC	NAR-HC	Poor	AR-HC	GS-HC	NAR-HC	GS-HC	NAR-HC		GS-HC	Poor	Poor	Restore 2021

GROUNDWATER STATUS RESULTS CONTINUED.

GWB Code	GWB Name	Water Balance		Diffuse Pressures				Point Source Pressures				GW Quality		Dependent Surface Waters						Dependent Ecosystems			GWB Overall Status and Objectives						
		Water Balance Status	Intrusion Status	Drinking Water Status	Diffuse Status	Urban Status	Urban Risk	Lanefill Risk	Quarry Risk	UWWT Risk	Contaminated Land Stat	Mine Status	GW Quality Status	GW Quality Risk	MRP SW Test Status	MRP SW Test Risk	Trace Test Status	Trace Test Risk	SW Overall Status	SW Overall Risk	SW Quantity Status	SW Quantity Risk	GWOTE Status	GWOTE Risk	GWOTE Name	Quantitative Status	Chemical Status	Final Status	Objective
IE SH G 079	Duckstown	GS-HC	GS-HC	GS-HC	GS-HC	GS-HC	NAR-HC	NAR-HC	NAR-HC	GS-HC	GS-HC	GS-HC	NAR-LC	GS-LC	NAR-LC	GS-LC	NAR-LC	GS-LC	NAR-LC	GS-HC	NAR-HC	GS-HC	NAR-HC		GS-HC	GS-LC	Good	Protect	
IE SH G 080	Ennis	GS-HC	GS-HC	GS-LC	GS-HC	GS-HC	NAR-HC	NAR-HC	NAR-HC	GS-HC	GS-HC	GS-HC	NAR-HC	Poor	AR-HC	GS-HC	NAR-HC	Poor	AR-HC	GS-HC	NAR-HC	GS-HC	NAR-HC		GS-HC	Poor	Poor	Restore 2021	
IE SH G 081	Ennis 1	GS-HC	GS-HC	GS-HC	GS-HC	GS-LC	AR-LC	AR-LC	NAR-HC	NAR-HC	GS-HC	GS-HC	GS-LC	AR-LC	Poor	AR-HC	GS-HC	NAR-HC	Poor	AR-HC	GS-HC	NAR-HC	GS-HC	NAR-HC		GS-HC	Poor	Poor	Restore 2021
IE SH G 082	Ennis 2	GS-HC	GS-HC	GS-HC	GS-HC	GS-LC	AR-LC	AR-LC	NAR-HC	NAR-HC	GS-LC	GS-HC	GS-LC	AR-LC	Poor	AR-HC	GS-HC	NAR-HC	Poor	AR-HC	GS-HC	NAR-HC	GS-HC	NAR-HC		GS-HC	Poor	Poor	Restore 2021
IE SH G 083	Ennisurban	GS-LC	GS-HC	GS-LC	GS-HC	GS-LC	AR-LC	AR-LC	NAR-HC	NAR-HC	GS-HC	GS-HC	GS-LC	AR-LC	Poor	AR-HC	GS-HC	NAR-HC	Poor	AR-HC	GS-HC	NAR-HC	GS-HC	NAR-HC		GS-LC	Poor	Poor	Restore 2021
IE SH G 084	Fedamore	GS-HC	GS-LC	GS-HC	GS-HC	GS-HC	NAR-HC	NAR-HC	NAR-HC	GS-HC	GS-HC	GS-HC	NAR-LC	Poor	AR-HC	GS-LC	AR-HC	Poor	AR-HC	GS-HC	NAR-HC	GS-HC	NAR-HC		GS-LC	Poor	Poor	Restore 2021	
IE SH G 085	Fedamore 1	GS-HC	GS-HC	GS-HC	GS-HC	GS-HC	NAR-HC	NAR-HC	NAR-HC	GS-HC	GS-HC	GS-HC	NAR-LC	Poor	AR-HC	GS-LC	AR-HC	Poor	AR-HC	GS-HC	NAR-HC	GS-HC	NAR-HC		GS-HC	Poor	Poor	Restore 2021	
IE SH G 086	Fedamore 2	GS-HC	GS-HC	GS-HC	GS-HC	GS-HC	NAR-HC	AR-LC	NAR-HC	NAR-HC	GS-HC	GS-HC	GS-HC	AR-LC	Poor	AR-HC	GS-LC	AR-HC	Poor	AR-HC	GS-HC	NAR-HC	GS-HC	NAR-HC		GS-HC	Poor	Poor	Restore 2021
IE SH G 087	Fedamore 3	GS-HC	GS-HC	GS-HC	GS-HC	GS-HC	NAR-HC	AR-LC	NAR-HC	NAR-HC	GS-HC	GS-HC	GS-HC	AR-LC	GS-HC	NAR-HC	GS-LC	AR-HC	GS-LC	AR-HC	GS-HC	NAR-HC	GS-HC	NAR-HC		GS-HC	GS-LC	Good	Protect
IE SH G 088	Feenagh	GS-HC	GS-HC	GS-HC	GS-HC	GS-HC	NAR-HC	NAR-HC	NAR-HC	GS-HC	GS-HC	GS-HC	NAR-LC	GS-LC	NAR-LC	GS-HC	NAR-HC	GS-LC	NAR-LC	GS-HC	NAR-HC	GS-HC	NAR-HC		GS-HC	GS-LC	Good	Protect	
IE SH G 089	Ferbane	GS-HC	GS-HC	GS-HC	GS-HC	GS-HC	NAR-HC	NAR-HC	NAR-HC	GS-HC	GS-HC	GS-HC	NAR-LC	GS-HC	NAR-HC	GS-HC	NAR-HC	GS-HC	NAR-HC	GS-HC	NAR-HC	GS-HC	NAR-HC		GS-HC	GS-HC	Good	Protect	
IE SH G 090	Ferbane 1	GS-HC	GS-HC	GS-HC	GS-HC	GS-HC	NAR-HC	AR-LC	NAR-HC	NAR-HC	GS-HC	GS-HC	GS-HC	AR-LC	GS-HC	NAR-HC	GS-HC	NAR-HC	GS-HC	NAR-HC	GS-HC	NAR-HC	GS-HC	NAR-HC		GS-HC	GS-HC	Good	Protect
IE SH G 091	Funshinagh	GS-HC	GS-HC	GS-LC	GS-HC	GS-HC	NAR-HC	NAR-HC	NAR-HC	GS-HC	GS-HC	GS-HC	NAR-LC	Poor	AR-HC	GS-HC	NAR-HC	Poor	AR-HC	GS-HC	NAR-HC	GS-HC	NAR-HC		GS-HC	Poor	Poor	Restore 2021	
IE SH G 092	Funshinagh 1	GS-HC	GS-HC	GS-HC	GS-HC	GS-HC	NAR-HC	NAR-HC	NAR-HC	GS-HC	GS-HC	GS-HC	NAR-LC	Poor	AR-HC	GS-HC	NAR-HC	Poor	AR-HC	GS-HC	NAR-HC	GS-HC	NAR-HC		GS-HC	Poor	Poor	Restore 2021	
IE SH G 093	GL1	GS-HC	GS-HC	GS-HC	GS-LC	GS-HC	NAR-HC	NAR-HC	NAR-HC	GS-HC	GS-HC	GS-LC	AR-HC	GS-HC	NAR-HC	GS-LC	NAR-LC	GS-LC	NAR-LC	GS-HC	NAR-HC	GS-HC	NAR-HC		GS-HC	GS-LC	Good	Protect	
IE SH G 094	GL2	GS-HC	GS-HC	GS-HC	GS-LC	GS-HC	NAR-HC	NAR-HC	NAR-HC	GS-HC	GS-HC	GS-LC	AR-HC	Poor	Poor	AR-HC	GS-LC	AR-HC	GS-HC	NAR-HC	GS-LC	AR-HC	GS-HC	NAR-HC		GS-HC	Poor	Poor	Restore 2027
IE SH G 095	GL3	GS-HC	GS-HC	GS-HC	GS-LC	GS-HC	NAR-HC	NAR-HC	NAR-HC	GS-HC	GS-HC	GS-LC	AR-HC	GS-LC	GS-HC	GS-LC	AR-HC	GS-LC	AR-HC	GS-HC	NAR-HC	GS-HC	NAR-HC		GS-HC	GS-LC	Good	Protect	
IE SH G 096	GL4	GS-HC	GS-HC	GS-LC	GS-LC	GS-HC	NAR-HC	NAR-HC	NAR-HC	GS-HC	GS-HC	GS-LC	AR-HC	GS-LC	AR-HC	GS-HC	NAR-HC	GS-LC	AR-HC	GS-HC	NAR-HC	GS-HC	NAR-HC		GS-HC	GS-LC	Good	Protect	
IE SH G 097	GL4 1	GS-HC	GS-HC	GS-HC	GS-LC	GS-HC	NAR-HC	NAR-HC	NAR-HC	GS-HC	GS-HC	GS-LC	AR-HC	GS-HC	NAR-HC	GS-HC	NAR-HC	GS-HC	NAR-HC	GS-HC	NAR-HC	GS-HC	NAR-HC		GS-HC	GS-LC	Good	Protect	
IE SH G 098	GL4 2	GS-HC	GS-HC	GS-HC	GS-LC	GS-HC	NAR-HC	AR-LC	NAR-HC	NAR-HC	GS-HC	GS-HC	GS-LC	AR-HC	GS-LC	AR-HC	GS-HC	NAR-HC	GS-LC	AR-HC	GS-HC	NAR-HC	GS-HC	NAR-HC		GS-HC	GS-LC	Good	Protect
IE SH G 099	GL5	GS-HC	GS-HC	GS-HC	GS-LC	GS-HC	NAR-HC	NAR-HC	NAR-HC	GS-HC	GS-HC	GS-LC	AR-HC	GS-LC	AR-HC	GS-HC	NAR-HC	GS-LC	AR-HC	GS-HC	NAR-HC	GS-HC	NAR-HC		GS-HC	GS-LC	Good	Protect	
IE SH G 100	GL5 1	GS-HC	GS-HC	GS-HC	GS-LC	GS-HC	NAR-HC	AR-LC	NAR-HC	NAR-HC	GS-HC	GS-HC	GS-LC	AR-HC	GS-HC	NAR-HC	GS-HC	NAR-HC	GS-HC	NAR-HC	GS-HC	NAR-HC	GS-HC	NAR-HC		GS-HC	GS-LC	Good	Protect
IE SH G 101	GL6	GS-HC	GS-HC	GS-HC	GS-LC	GS-HC	NAR-HC	NAR-HC	NAR-HC	GS-HC	GS-HC	GS-LC	AR-HC	GS-LC	AR-HC	GS-HC	NAR-HC	GS-LC	AR-HC	GS-HC	NAR-HC	GS-HC	NAR-HC		GS-HC	GS-LC	Good	Protect	
IE SH G 102	GL7	GS-HC	GS-HC	GS-HC	GS-LC	GS-HC	NAR-HC	NAR-HC	NAR-HC	GS-HC	GS-HC	GS-LC	AR-HC	GS-LC	AR-HC	GS-HC	NAR-HC	GS-LC	AR-HC	GS-HC	NAR-HC	GS-HC	NAR-HC		GS-HC	GS-LC	Good	Protect	
IE SH G 103	Geashill	GS-HC	GS-HC	GS-LC	GS-HC	GS-HC	NAR-HC	NAR-HC	NAR-HC	GS-HC	GS-HC	GS-HC	NAR-LC	GS-HC	NAR-HC	GS-HC	NAR-HC	GS-HC	NAR-HC	GS-HC	NAR-HC	GS-LC	AR-LC	SAC - 859	GS-LC	GS-LC	Good	Protect	
IE SH G 104	Geashill 1	GS-HC	GS-HC	GS-HC	GS-HC	GS-HC	NAR-HC	AR-LC	NAR-HC	NAR-HC	GS-HC	GS-HC	GS-HC	AR-LC	GS-HC	NAR-HC	GS-HC	NAR-HC	GS-HC	NAR-HC	GS-HC	NAR-HC	GS-HC	NAR-HC		GS-HC	GS-HC	Good	Protect
IE SH G 105	Geevagh	GS-HC	GS-HC	GS-HC	GS-HC	GS-HC	NAR-HC	NAR-HC	NAR-HC	GS-HC	GS-HC	GS-HC	NAR-HC	Poor	AR-HC	GS-HC	NAR-HC	Poor	AR-HC	GS-HC	NAR-HC	GS-HC	NAR-HC		GS-HC	Poor	Poor	Restore 2021	
IE SH G 106	Herbertstown	GS-HC	GS-HC	GS-HC	GS-HC	GS-HC	NAR-HC	NAR-HC	NAR-HC	GS-HC	GS-HC	GS-HC	NAR-LC	Poor	AR-HC	GS-LC	AR-HC	Poor	AR-HC	GS-HC	NAR-HC	GS-HC	NAR-HC		GS-HC	Poor	Poor	Restore 2021	
IE SH G 107	Hospital	GS-HC	GS-HC	GS-HC	GS-HC	GS-HC	NAR-HC	NAR-HC	NAR-HC	GS-HC	GS-HC	GS-HC	NAR-LC	GS-LC	NAR-LC	GS-LC	NAR-LC	GS-LC	NAR-LC	GS-HC	NAR-HC	GS-HC	NAR-HC		GS-HC	GS-LC	Good	Protect	
IE SH G 108	Hospital 2	GS-HC	GS-HC	GS-HC	GS-HC	GS-HC	NAR-HC	AR-LC	NAR-HC	NAR-HC	GS-HC	GS-HC	GS-HC	AR-LC	GS-LC	NAR-LC	GS-LC	NAR-LC	GS-LC	NAR-LC	GS-HC	NAR-HC	GS-HC	NAR-HC		GS-HC	GS-LC	Good	Protect
IE SH G 109	Hospital 3	GS-HC	GS-LC	GS-HC	GS-HC	GS-HC	NAR-HC	AR-LC	NAR-HC	NAR-HC	GS-HC	GS-HC	GS-HC	AR-LC	GS-LC	NAR-LC	GS-LC	NAR-LC	GS-LC	NAR-LC	GS-HC	NAR-HC	GS-HC	NAR-HC		GS-LC	GS-LC	Good	Protect
IE SH G 110	Inny	GS-HC	GS-HC	GS-HC	GS-HC	GS-HC	NAR-HC	NAR-HC	NAR-HC	GS-HC	GS-HC	GS-HC	NAR-LC	GS-HC	NAR-HC	GS-HC	NAR-HC	GS-HC	NAR-HC	GS-HC	NAR-HC	GS-HC	NAR-HC		GS-HC	GS-HC	Good	Protect	
IE SH G 111	Inny 1	GS-HC	GS-HC	GS-HC	GS-HC	GS-HC	NAR-HC	AR-LC	NAR-HC	NAR-HC	GS-HC	GS-HC	GS-HC	AR-LC	GS-HC	NAR-HC	GS-HC	NAR-HC	GS-HC	NAR-HC	GS-HC	NAR-HC	GS-HC	NAR-HC		GS-HC	GS-HC	Good	Protect
IE SH G 112	Inny 2	GS-HC	GS-HC	GS-HC	GS-HC	GS-HC	NAR-HC	AR-LC	NAR-HC	NAR-HC	GS-HC	GS-HC	GS-HC	AR-LC	GS-HC	NAR-HC	GS-HC	NAR-HC	GS-HC	NAR-HC	GS-HC	NAR-HC	GS-HC	NAR-HC		GS-HC	GS-HC	Good	Protect
IE SH G 113	Inny 3	GS-HC	GS-HC	GS-HC	GS-HC	GS-HC	NAR-HC	AR-LC	NAR-HC	NAR-HC	GS-HC	GS-HC	GS-HC	AR-LC	GS-HC	NAR-HC	GS-HC	NAR-HC	GS-HC	NAR-HC	GS-HC	NAR-HC	GS-HC	NAR-HC		GS-HC	GS-HC	Good	Protect
IE SH G 114	Inny 4	GS-HC	GS-HC	GS-HC	GS-HC	GS-HC	NAR-HC	AR-LC	NAR-HC	NAR-HC	GS-HC	GS-HC	GS-HC	AR-LC	GS-HC	NAR-HC	GS-HC	NAR-HC	GS-HC	NAR-HC	GS-HC	NAR-HC	GS-HC	NAR-HC		GS-HC	GS-HC	Good	Protect
IE SH G 115	Inny 5	GS-HC	GS-HC	GS-HC	GS-HC	GS-HC	NAR-HC	AR-LC	NAR-HC	NAR-HC	GS-HC	GS-HC	GS-HC	AR-LC	GS-HC	NAR-HC	GS-HC	NAR-HC	GS-HC	NAR-HC	GS-HC	NAR-HC	GS-HC	NAR-HC		GS-HC	GS-HC	Good	Protect
IE SH G 116	Inny 6	GS-HC	GS-HC	GS-HC	GS-HC	GS-HC	NAR-HC	AR-LC	NAR-HC	NAR-HC	GS-HC	GS-HC	GS-HC	AR-LC	GS-HC	NAR-HC	GS-HC	NAR-HC	GS-HC	NAR-HC	GS-HC	NAR-HC	GS-HC	NAR-HC		GS-HC	GS-HC	Good	Protect
IE SH G 117	Inny 7	GS-HC	GS-HC	GS-HC	GS-HC	GS-LC	AR-LC	AR-LC	NAR-HC	NAR-HC	GS-HC	GS-HC	GS-LC	AR-LC	GS-HC	NAR-HC	GS-HC	NAR-HC	GS-HC	NAR-HC	GS-HC	NAR-HC	GS-HC	NAR-HC		GS-HC	GS-LC	Good	Protect
IE SH G 118	Kery Head	GS-LC	GS-HC	GS-LC	GS-HC	GS-HC	NAR-HC	NAR-HC	NAR-HC	GS-HC	GS-HC	GS-HC	NAR-HC	GS-LC	NAR-LC	GS-LC	NAR-LC	GS-LC	NAR-LC	GS-HC	NAR-HC	GS-HC	NAR-HC		GS-LC	GS-LC	Good	Protect	

GROUNDWATER STATUS RESULTS CONTINUED.

GWB Details		Water Balance		Diffuse Pressures			Point Source Pressures				GW Quality		Dependent Surface Waters						Dependent Ecosystems		GWB Overall Status and Objectives								
GWB Code	GWB Name	Water Balance Status	Intrusion Status	Drinking Water Status	Diffuse Status	Urban Status	Urban Risk	Landfill Risk	Quarry Risk	UWWT Risk	Contaminated Land Status	Mine Status	GW Quality Status	GW Quality Risk	MSP SW Test Status	MPS SW Test Risk	Trae Test Status	Trae Test Risk	SW Overall Status	SW Overall Risk	SW Quantity Status	SW Quantity Risk	GWOTE Status	GWOTE Risk	GWOTE Name	Quantitative Status	Chemical Status	Final Status	Objective
IE SH G 119	Kildimo	GS-HC	GS-HC	GS-HC	GS-HC	GS-HC	NAR-HC	NAR-HC	NAR-HC	NAR-HC	GS-HC	GS-HC	GS-HC	NAR-HC	Poor	AR-HC	GS-LC	NAR-LC	Poor	AR-HC	GS-HC	NAR-HC	GS-HC	NAR-HC		GS-HC	Poor	Poor	Restore 2021
IE SH G 120	Kilglass Dromod	GS-LC	GS-HC	GS-HC	GS-HC	GS-HC	NAR-HC	NAR-HC	NAR-HC	NAR-HC	GS-HC	GS-HC	GS-HC	NAR-LC	GS-HC	NAR-HC	GS-HC	NAR-HC	GS-HC	NAR-HC	GS-HC	NAR-HC	GS-HC	NAR-HC		GS-LC	GS-HC	Good	Protect
IE SH G 121	Kilkishen	GS-HC	GS-HC	GS-HC	GS-HC	GS-HC	NAR-HC	NAR-HC	NAR-HC	NAR-HC	GS-HC	GS-HC	GS-HC	NAR-HC	Poor	AR-HC	GS-HC	NAR-HC	Poor	AR-HC	GS-HC	NAR-HC	GS-LC	AR-LC	SAC -51	GS-LC	Poor	Poor	Restore 2021
IE SH G 122	Kilmeedy	GS-HC	GS-HC	GS-HC	GS-HC	GS-HC	NAR-HC	NAR-HC	NAR-HC	NAR-HC	GS-HC	GS-HC	GS-HC	NAR-LC	GS-LC	AR-HC	GS-HC	NAR-HC	GS-LC	AR-HC	GS-HC	NAR-HC	GS-HC	NAR-HC		GS-HC	GS-LC	Good	Protect
IE SH G 123	Kilrush	GS-HC	GS-HC	GS-HC	GS-HC	GS-HC	NAR-HC	NAR-HC	NAR-HC	NAR-HC	GS-LC	GS-HC	GS-LC	NAR-LC	GS-LC	NAR-LC	GS-HC	NAR-HC	GS-LC	NAR-LC	GS-HC	NAR-HC	GS-HC	NAR-HC		GS-HC	GS-HC	Good	Protect
IE SH G 124	Kilrush 1	GS-HC	GS-HC	GS-HC	GS-HC	GS-HC	NAR-HC	AR-LC	NAR-HC	NAR-HC	GS-HC	GS-HC	GS-HC	AR-LC	GS-HC	NAR-HC	GS-HC	NAR-HC	GS-HC	NAR-HC	GS-HC	NAR-HC	GS-HC	NAR-HC		GS-HC	GS-HC	Good	Protect
IE SH G 125	Kilrush 2	GS-HC	GS-HC	GS-HC	GS-HC	GS-HC	NAR-HC	AR-LC	NAR-HC	NAR-HC	GS-HC	GS-HC	GS-HC	AR-LC	GS-HC	NAR-HC	GS-HC	NAR-HC	GS-HC	NAR-HC	GS-HC	NAR-HC	GS-HC	NAR-HC		GS-HC	GS-HC	Good	Protect
IE SH G 126	Kilrush 3	GS-HC	GS-HC	GS-HC	GS-HC	GS-HC	NAR-HC	AR-LC	NAR-HC	NAR-HC	GS-HC	GS-HC	GS-HC	AR-LC	GS-HC	NAR-HC	GS-HC	NAR-HC	GS-HC	NAR-HC	GS-HC	NAR-HC	GS-HC	NAR-HC		GS-HC	GS-HC	Good	Protect
IE SH G 127	Kilrush 4	GS-HC	GS-HC	GS-HC	GS-HC	GS-HC	NAR-HC	NAR-HC	NAR-HC	NAR-HC	GS-LC	GS-HC	GS-LC	NAR-LC	GS-HC	NAR-HC	GS-HC	NAR-HC	GS-HC	NAR-HC	GS-HC	NAR-HC	GS-HC	NAR-HC		GS-HC	GS-LC	Good	Protect
IE SH G 128	Knockaderry	GS-LC	GS-HC	GS-HC	GS-HC	GS-HC	NAR-HC	NAR-HC	NAR-HC	NAR-HC	GS-HC	GS-HC	GS-HC	NAR-LC	GS-HC	NAR-HC	GS-HC	NAR-HC	GS-HC	NAR-HC	GS-HC	NAR-HC	GS-HC	NAR-HC		GS-LC	GS-HC	Good	Protect
IE SH G 129	Knockroe East	GS-HC	GS-HC	GS-HC	GS-HC	GS-HC	NAR-HC	NAR-HC	NAR-HC	NAR-HC	GS-HC	GS-HC	GS-HC	NAR-LC	GS-LC	NAR-LC	GS-HC	NAR-HC	GS-LC	NAR-LC	GS-HC	NAR-HC	GS-HC	NAR-HC		GS-HC	GS-LC	Good	Protect
IE SH G 130	Knockroe Northwest	GS-HC	GS-HC	GS-HC	GS-HC	GS-HC	NAR-HC	NAR-HC	NAR-HC	NAR-HC	GS-HC	GS-HC	GS-HC	NAR-LC	GS-HC	NAR-HC	GS-LC	NAR-LC	GS-LC	NAR-LC	GS-HC	NAR-HC	GS-HC	NAR-HC		GS-HC	GS-LC	Good	Protect
IE SH G 131	Knockroe Southwest	GS-HC	GS-HC	GS-HC	GS-HC	GS-HC	NAR-HC	NAR-HC	NAR-HC	NAR-HC	GS-HC	GS-HC	GS-HC	NAR-LC	GS-LC	NAR-LC	GS-LC	NAR-LC	GS-LC	NAR-LC	GS-HC	NAR-HC	GS-HC	NAR-HC		GS-HC	GS-LC	Good	Protect
IE SH G 132	Knockroe Southwest 1	GS-HC	GS-HC	GS-HC	GS-HC	GS-HC	NAR-HC	AR-LC	NAR-HC	NAR-HC	GS-HC	GS-HC	GS-HC	AR-LC	GS-LC	NAR-LC	GS-LC	NAR-LC	GS-LC	NAR-LC	GS-HC	NAR-HC	GS-HC	NAR-HC		GS-HC	GS-LC	Good	Protect
IE SH G 133	Knockseefin-Longstone E	GS-HC	GS-HC	GS-HC	GS-HC	GS-HC	NAR-HC	NAR-HC	NAR-HC	NAR-HC	GS-HC	GS-HC	GS-HC	NAR-LC	GS-LC	NAR-LC	GS-HC	NAR-HC	GS-LC	NAR-LC	GS-HC	NAR-HC	GS-HC	NAR-HC		GS-HC	GS-LC	Good	Protect
IE SH G 134	Knockseefin-Longstone W	GS-HC	GS-HC	GS-HC	GS-HC	GS-HC	NAR-HC	NAR-HC	NAR-HC	NAR-HC	GS-HC	GS-HC	GS-HC	NAR-LC	GS-LC	NAR-LC	GS-LC	NAR-LC	GS-LC	NAR-LC	GS-HC	NAR-HC	GS-HC	NAR-HC		GS-HC	GS-LC	Good	Protect
IE SH G 135	Lanesborough	GS-HC	GS-HC	GS-HC	GS-HC	GS-HC	NAR-HC	NAR-HC	NAR-HC	NAR-HC	GS-HC	GS-HC	GS-HC	NAR-LC	Poor	AR-HC	GS-HC	NAR-HC	Poor	AR-HC	GS-HC	NAR-HC	GS-HC	NAR-HC		GS-HC	Poor	Poor	Restore 2021
IE SH G 136	Lanesborough 1	GS-HC	GS-HC	GS-HC	GS-HC	GS-HC	NAR-HC	AR-LC	NAR-HC	NAR-HC	GS-HC	GS-HC	GS-HC	AR-LC	Poor	AR-HC	GS-HC	NAR-HC	Poor	AR-HC	GS-HC	NAR-HC	GS-HC	NAR-HC		GS-HC	Poor	Poor	Restore 2021
IE SH G 137	Lanesborough 2	GS-LC	GS-HC	GS-HC	GS-HC	GS-HC	NAR-HC	NAR-HC	NAR-HC	NAR-HC	GS-HC	GS-HC	GS-HC	NAR-LC	Poor	AR-HC	GS-HC	NAR-HC	Poor	AR-HC	GS-HC	NAR-HC	GS-HC	NAR-HC		GS-LC	Poor	Poor	Restore 2021
IE SH G 138	Limerick City East	GS-HC	GS-HC	GS-HC	GS-HC	GS-HC	NAR-HC	NAR-HC	NAR-HC	NAR-HC	GS-HC	GS-HC	GS-HC	NAR-LC	Poor	AR-HC	GS-HC	NAR-HC	Poor	AR-HC	GS-HC	NAR-HC	GS-HC	NAR-HC		GS-HC	Poor	Poor	Restore 2021
IE SH G 139	Limerick City North	GS-HC	GS-HC	GS-HC	GS-HC	GS-HC	NAR-HC	NAR-HC	NAR-HC	NAR-HC	GS-HC	GS-HC	GS-HC	NAR-LC	Poor	AR-HC	GS-HC	NAR-HC	Poor	AR-HC	GS-HC	NAR-HC	GS-HC	NAR-HC		GS-HC	Poor	Poor	Restore 2021
IE SH G 140	Limerick City Northwest	GS-HC	GS-HC	GS-HC	GS-HC	GS-LC	AR-LC	NAR-HC	NAR-HC	NAR-HC	GS-HC	GS-HC	GS-LC	AR-LC	GS-HC	NAR-HC	GS-HC	NAR-HC	GS-HC	NAR-HC	GS-HC	NAR-HC	GS-HC	NAR-HC		GS-HC	GS-LC	Good	Protect
IE SH G 141	Limerick City South West	GS-LC	GS-HC	GS-HC	GS-HC	GS-HC	NAR-HC	NAR-HC	NAR-HC	NAR-HC	GS-HC	GS-HC	GS-HC	NAR-LC	Poor	AR-HC	GS-LC	AR-HC	Poor	AR-HC	GS-HC	NAR-HC	GS-HC	NAR-HC		GS-LC	Poor	Poor	Restore 2021
IE SH G 142	LimerickCityNorth 1	GS-HC	GS-HC	GS-HC	GS-HC	GS-LC	AR-LC	AR-LC	NAR-HC	NAR-HC	GS-HC	GS-HC	GS-LC	AR-LC	GS-HC	NAR-HC	GS-HC	NAR-HC	GS-HC	NAR-HC	GS-HC	NAR-HC	GS-HC	NAR-HC		GS-HC	GS-LC	Good	Protect
IE SH G 143	Limerickurban sw 1	GS-HC	GS-HC	GS-HC	GS-HC	GS-LC	AR-LC	AR-LC	NAR-HC	NAR-HC	GS-LC	GS-HC	GS-LC	AR-LC	Poor	AR-HC	GS-HC	NAR-HC	Poor	AR-HC	GS-HC	NAR-HC	GS-HC	NAR-HC		GS-HC	Poor	Poor	Restore 2021
IE SH G 144	Limerickurban n	GS-HC	GS-HC	GS-HC	GS-HC	GS-LC	AR-LC	AR-LC	NAR-HC	NAR-HC	GS-HC	GS-HC	GS-LC	AR-LC	GS-HC	NAR-HC	GS-HC	NAR-HC	GS-HC	NAR-HC	GS-HC	NAR-HC	GS-HC	NAR-HC		GS-HC	GS-LC	Good	Protect
IE SH G 145	Limerickurban se	GS-HC	GS-HC	GS-HC	GS-HC	GS-LC	AR-LC	AR-LC	NAR-HC	NAR-HC	GS-HC	GS-HC	GS-LC	AR-LC	Poor	AR-HC	GS-HC	NAR-HC	Poor	AR-HC	GS-HC	NAR-HC	GS-HC	NAR-HC		GS-HC	Poor	Poor	Restore 2021
IE SH G 146	Limerickurban sw	GS-HC	GS-HC	GS-HC	GS-HC	GS-HC	NAR-HC	NAR-HC	NAR-HC	NAR-HC	GS-HC	GS-HC	GS-HC	NAR-LC	Poor	AR-HC	GS-LC	AR-HC	Poor	AR-HC	GS-HC	NAR-HC	GS-HC	NAR-HC		GS-HC	Poor	Poor	Restore 2021
IE SH G 147	Lismaine	GS-HC	GS-HC	GS-HC	GS-HC	GS-HC	NAR-HC	NAR-HC	NAR-HC	NAR-HC	GS-HC	GS-HC	GS-HC	NAR-LC	GS-HC	NAR-HC	GS-HC	NAR-HC	GS-HC	NAR-HC	GS-HC	NAR-HC	GS-HC	NAR-HC		GS-HC	GS-HC	Good	Protect
IE SH G 148	Lissycasey	GS-HC	GS-HC	GS-HC	GS-HC	GS-HC	NAR-HC	NAR-HC	NAR-HC	NAR-HC	GS-HC	GS-HC	GS-HC	NAR-LC	GS-LC	NAR-LC	GS-HC	NAR-HC	GS-LC	NAR-LC	GS-HC	NAR-HC	GS-HC	NAR-HC		GS-HC	GS-LC	Good	Protect
IE SH G 149	Longford Ballinalee	GS-HC	GS-HC	GS-HC	GS-HC	GS-HC	NAR-HC	NAR-HC	NAR-HC	NAR-HC	GS-HC	GS-HC	GS-HC	NAR-LC	GS-LC	NAR-LC	GS-HC	NAR-HC	GS-LC	NAR-LC	GS-HC	NAR-HC	GS-HC	NAR-HC		GS-HC	GS-LC	Good	Protect
IE SH G 150	Longford 1	GS-HC	GS-HC	GS-HC	GS-HC	GS-HC	NAR-HC	AR-LC	NAR-HC	NAR-HC	GS-HC	GS-HC	GS-HC	AR-LC	GS-HC	NAR-HC	GS-HC	NAR-HC	GS-HC	NAR-HC	GS-HC	NAR-HC	GS-HC	NAR-HC		GS-HC	GS-HC	Good	Protect
IE SH G 151	Longford 2	GS-HC	GS-HC	GS-HC	GS-HC	GS-HC	NAR-HC	AR-LC	NAR-HC	NAR-HC	GS-HC	GS-HC	GS-HC	AR-LC	GS-HC	NAR-HC	GS-HC	NAR-HC	GS-HC	NAR-HC	GS-HC	NAR-HC	GS-HC	NAR-HC		GS-HC	GS-HC	Good	Protect
IE SH G 152	Longford 3	GS-HC	GS-HC	GS-HC	GS-HC	GS-HC	NAR-HC	AR-LC	NAR-HC	NAR-HC	GS-HC	GS-HC	GS-HC	AR-LC	GS-HC	NAR-HC	GS-HC	NAR-HC	GS-HC	NAR-HC	GS-HC	NAR-HC	GS-HC	NAR-HC		GS-HC	GS-HC	Good	Protect
IE SH G 153	Longford 4	GS-HC	GS-HC	GS-HC	GS-HC	GS-HC	NAR-HC	NAR-HC	NAR-LC	NAR-HC	GS-HC	GS-HC	GS-HC	NAR-LC	GS-HC	NAR-HC	GS-HC	NAR-HC	GS-HC	NAR-HC	GS-HC	NAR-HC	GS-HC	NAR-HC		GS-HC	GS-HC	Good	Protect
IE SH G 154	Longford 5	GS-HC	GS-HC	GS-HC	GS-HC	GS-HC	NAR-HC	AR-LC	NAR-HC	NAR-HC	GS-HC	GS-HC	GS-HC	NAR-LC	GS-HC	NAR-HC	GS-HC	NAR-HC	GS-HC	NAR-HC	GS-HC	NAR-HC	GS-HC	NAR-HC		GS-HC	GS-HC	Good	Protect
IE SH G 155	Longfordurban	GS-HC	GS-HC	GS-HC	GS-HC	GS-HC	NAR-HC	NAR-HC	NAR-HC	NAR-HC	GS-HC	GS-HC	GS-HC	NAR-LC	GS-HC	NAR-HC	GS-HC	NAR-HC	GS-HC	NAR-HC	GS-HC	NAR-HC	GS-HC	NAR-HC		GS-HC	GS-HC	Good	Protect
IE SH G 156	Lough Ackrick	GS-HC	GS-HC	GS-HC	GS-HC	GS-HC	NAR-HC	NAR-HC	NAR-HC	NAR-HC	GS-HC	GS-HC	GS-HC	NAR-LC	GS-HC	NAR-HC	GS-HC	NAR-HC	GS-HC	NAR-HC	GS-HC	NAR-HC	GS-HC	NAR-HC		GS-HC	GS-HC	Good	Protect
IE SH G 157	Lough Graney	GS-HC	GS-HC	GS-HC	GS-HC	GS-HC	NAR-HC	NAR-HC	NAR-HC	NAR-HC	GS-LC	GS-HC	GS-LC	AR-LC	GS-LC	NAR-LC	GS-HC	NAR-HC	GS-LC	NAR-LC	GS-HC	NAR-HC	GS-HC	NAR-HC		GS-HC	GS-LC	Good	Protect

GROUNDWATER STATUS RESULTS CONTINUED.

GWB Details		Water Balance			Diffuse Pressures			Point Source Pressures				GW Quality		Dependent Surface Waters						Dependent Ecosystems		GWB Overall Status and Objectives							
GWB Code	GWB Name	Water Balance Status	Intrusion Status	Drinking Water Status	Diffuse Status	Urban Status	Urban Risk	Landfill Risk	Query Risk	UWWT Risk	Contaminated Land Status	Mine Status	GW Quality Status	GW Quality Risk	MHP SW Test Status	MHP SW Test Risk	Trace Test Status	Trace Test Risk	SW Overall Status	SW Overall Risk	SW Quantity Status	SW Quantity Risk	GWOTE Status	GWOTE Risk	GWOTE Name	Quantitative Status	Chemical Status	Final Status	Objective
IE SH G 158	LoughAllenUplands 1	GS-HC	GS-HC	GS-LC	GS-HC	GS-HC	NAR-HC	NAR-HC	NAR-HC	NAR-HC	GS-HC	GS-LC	GS-LC	AR-LC	GS-HC	NAR-HC	GS-HC	NAR-HC	GS-HC	NAR-HC	GS-HC	NAR-HC	GS-HC	NAR-HC		GS-HC	GS-LC	Good	Protect
IE SH G 159	LoughAllenUplands 2	GS-HC	GS-HC	GS-HC	GS-HC	GS-HC	NAR-HC	NAR-HC	NAR-HC	NAR-HC	GS-HC	GS-LC	GS-LC	NAR-LC	GS-HC	NAR-HC	GS-HC	NAR-HC	GS-HC	NAR-HC	GS-HC	NAR-HC	GS-HC	NAR-HC		GS-HC	GS-LC	Good	Protect
IE SH G 160	LoughAllenUplands 3	GS-HC	GS-HC	GS-HC	GS-HC	GS-HC	NAR-HC	NAR-HC	NAR-HC	NAR-HC	GS-HC	GS-LC	GS-LC	NAR-LC	GS-HC	NAR-HC	GS-HC	NAR-HC	GS-HC	NAR-HC	GS-HC	NAR-HC	GS-HC	NAR-HC		GS-HC	GS-LC	Good	Protect
IE SH G 161	LoughAllenUplands 4	GS-HC	GS-HC	GS-HC	GS-HC	GS-HC	NAR-HC	NAR-HC	NAR-HC	NAR-HC	GS-HC	GS-LC	GS-LC	NAR-LC	GS-HC	NAR-HC	GS-HC	NAR-HC	GS-HC	NAR-HC	GS-HC	NAR-HC	GS-HC	NAR-HC		GS-HC	GS-LC	Good	Protect
IE SH G 162	Inny 9	GS-HC	GS-HC	GS-HC	GS-HC	GS-HC	NAR-HC	NAR-HC	NAR-HC	NAR-HC	GS-HC	GS-HC	GS-HC	NAR-LC	GS-HC	NAR-HC	GS-HC	NAR-HC	GS-HC	NAR-HC	GS-HC	NAR-HC	GS-LC	AR-LC	SAC - 440	GS-LC	GS-HC	Good	Protect
IE SH G 163	Inny 10	GS-HC	GS-HC	GS-HC	GS-HC	GS-HC	NAR-HC	NAR-HC	NAR-HC	NAR-HC	GS-HC	GS-HC	GS-HC	NAR-LC	GS-HC	NAR-HC	GS-HC	NAR-HC	GS-HC	NAR-HC	GS-HC	NAR-HC	GS-LC	AR-LC	SAC - 440	GS-LC	GS-HC	Good	Protect
IE SH G 164	Inny 11	GS-HC	GS-HC	GS-HC	GS-HC	GS-HC	NAR-HC	NAR-HC	NAR-HC	NAR-HC	GS-HC	GS-HC	GS-HC	NAR-LC	GS-HC	NAR-HC	GS-HC	NAR-HC	GS-HC	NAR-HC	GS-HC	NAR-HC	GS-LC	AR-LC	SAC - 440	GS-LC	GS-HC	Good	Protect
IE SH G 165	Inny 12	GS-HC	GS-HC	GS-HC	GS-HC	GS-HC	NAR-HC	NAR-HC	NAR-HC	NAR-HC	GS-HC	GS-HC	GS-HC	NAR-LC	GS-HC	NAR-HC	GS-HC	NAR-HC	GS-HC	NAR-HC	GS-HC	NAR-HC	GS-LC	AR-LC	SAC - 440	GS-LC	GS-HC	Good	Protect
IE SH G 166	Derravarragh 2	GS-LC	GS-HC	GS-HC	GS-HC	GS-HC	NAR-HC	NAR-HC	NAR-HC	NAR-HC	GS-HC	GS-HC	GS-HC	NAR-LC	GS-HC	NAR-HC	GS-HC	NAR-HC	GS-HC	NAR-HC	GS-HC	NAR-HC	GS-LC	AR-LC	SAC - 688	GS-LC	GS-HC	Good	Protect
IE SH G 167	Milltown Malbay	GS-HC	GS-HC	GS-HC	GS-HC	GS-HC	NAR-HC	NAR-HC	NAR-HC	NAR-HC	GS-HC	GS-LC	GS-LC	NAR-LC	GS-HC	NAR-HC	GS-HC	NAR-HC	GS-LC	NAR-LC	GS-HC	NAR-HC	GS-HC	NAR-HC		GS-HC	GS-LC	Good	Protect
IE SH G 168	MilltownMalbay 1	GS-HC	GS-HC	GS-HC	GS-HC	GS-HC	NAR-HC	NAR-HC	NAR-HC	NAR-HC	GS-HC	GS-LC	GS-LC	NAR-LC	GS-HC	NAR-HC	GS-HC	NAR-HC	GS-HC	NAR-HC	GS-HC	NAR-HC	GS-HC	NAR-HC		GS-HC	GS-LC	Good	Protect
IE SH G 169	MilltownMalbay 2	GS-HC	GS-HC	GS-HC	GS-HC	GS-HC	NAR-HC	NAR-HC	NAR-HC	AR-HC	GS-HC	GS-LC	GS-LC	AR-HC	GS-HC	NAR-HC	GS-HC	NAR-HC	GS-HC	NAR-HC	GS-HC	NAR-HC	GS-HC	NAR-HC		GS-HC	GS-LC	Good	Protect
IE SH G 170	MilltownMalbay 3	GS-HC	GS-HC	GS-HC	GS-HC	GS-HC	NAR-HC	NAR-HC	NAR-HC	NAR-HC	GS-HC	GS-LC	GS-LC	AR-LC	GS-HC	NAR-HC	GS-HC	NAR-HC	GS-HC	NAR-HC	GS-HC	NAR-HC	GS-HC	NAR-HC		GS-HC	GS-LC	Good	Protect
IE SH G 171	Mohill	GS-HC	GS-HC	GS-HC	GS-HC	GS-HC	NAR-HC	NAR-HC	NAR-HC	NAR-HC	GS-HC	GS-HC	GS-HC	NAR-LC	GS-HC	NAR-HC	GS-HC	NAR-HC	GS-HC	NAR-HC	GS-HC	NAR-HC	GS-HC	NAR-HC		GS-HC	GS-LC	Good	Protect
IE SH G 172	Mohill 1	GS-HC	GS-HC	GS-HC	GS-HC	GS-HC	NAR-HC	AR-LC	NAR-HC	NAR-HC	GS-HC	GS-HC	GS-HC	AR-LC	GS-HC	NAR-HC	GS-HC	NAR-HC	GS-HC	NAR-HC	GS-HC	NAR-HC	GS-HC	NAR-HC		GS-HC	GS-HC	Good	Protect
IE SH G 173	Mount Mary	GS-HC	GS-HC	GS-HC	GS-HC	GS-HC	NAR-HC	NAR-HC	NAR-HC	NAR-HC	GS-HC	GS-HC	GS-HC	NAR-HC	GS-HC	NAR-HC	GS-HC	NAR-HC	GS-HC	NAR-HC	GS-HC	NAR-HC	GS-HC	NAR-HC		GS-HC	GS-HC	Good	Protect
IE SH G 174	Mullingarurban n	GS-HC	GS-HC	GS-HC	GS-HC	GS-LC	AR-LC	NAR-HC	NAR-HC	NAR-HC	GS-HC	GS-HC	GS-LC	AR-LC	GS-HC	NAR-HC	GS-HC	NAR-HC	GS-HC	NAR-HC	GS-HC	NAR-HC	GS-HC	NAR-HC		GS-HC	GS-LC	Good	Protect
IE SH G 175	Mullingarurban s	GS-HC	GS-HC	GS-HC	GS-HC	GS-LC	AR-LC	NAR-HC	NAR-HC	NAR-HC	GS-HC	GS-HC	GS-HC	AR-LC	GS-HC	NAR-HC	GS-HC	NAR-HC	GS-HC	NAR-HC	GS-HC	NAR-HC	GS-HC	NAR-HC		GS-HC	GS-LC	Good	Protect
IE SH G 176	Fedamore 4	GS-HC	GS-HC	GS-HC	GS-HC	GS-HC	NAR-HC	NAR-HC	NAR-HC	NAR-HC	GS-HC	GS-HC	GS-HC	NAR-LC	GS-HC	NAR-HC	GS-LC	AR-HC	GS-LC	AR-HC	GS-HC	NAR-HC	GS-LC	AR-LC	SAC - 439	GS-LC	GS-LC	Good	Protect
IE SH G 177	Carrick on Shannon 6	GS-HC	GS-HC	GS-HC	GS-HC	GS-HC	NAR-HC	NAR-HC	NAR-HC	NAR-HC	GS-HC	GS-HC	GS-HC	NAR-LC	Poor	AR-HC	GS-HC	NAR-HC	Poor	AR-HC	GS-HC	NAR-HC	GS-LC	AR-LC	SAC - 1571	GS-LC	Poor	Poor	Restore 2015
IE SH G 178	Nenagh	GS-HC	GS-HC	GS-LC	GS-HC	GS-HC	NAR-HC	NAR-HC	NAR-HC	NAR-HC	GS-LC	GS-LC	GS-LC	AR-HC	GS-HC	NAR-HC	GS-HC	NAR-HC	GS-HC	NAR-HC	GS-HC	NAR-HC	GS-HC	NAR-HC		GS-HC	GS-LC	Good	Protect
IE SH G 179	Nenagh 1	GS-HC	GS-HC	GS-HC	GS-HC	GS-HC	NAR-HC	NAR-HC	NAR-HC	NAR-HC	GS-HC	GS-HC	GS-HC	AR-HC	GS-HC	NAR-HC	GS-HC	NAR-HC	GS-HC	NAR-HC	GS-HC	NAR-HC	GS-HC	NAR-HC		GS-HC	Poor	Poor	Restore 2027
IE SH G 180	Nenagh 10	GS-HC	GS-HC	GS-HC	GS-HC	GS-HC	NAR-HC	AR-LC	NAR-HC	NAR-HC	GS-HC	GS-HC	GS-HC	AR-LC	GS-HC	NAR-HC	GS-HC	NAR-HC	GS-HC	NAR-HC	GS-HC	NAR-HC	GS-HC	NAR-HC		GS-HC	GS-HC	Good	Protect
IE SH G 181	Nenagh 2	GS-HC	GS-HC	GS-HC	GS-HC	GS-HC	NAR-HC	AR-LC	NAR-HC	NAR-HC	GS-HC	GS-HC	GS-HC	AR-LC	GS-HC	NAR-HC	GS-HC	NAR-HC	GS-HC	NAR-HC	GS-HC	NAR-HC	GS-HC	NAR-HC		GS-HC	GS-HC	Good	Protect
IE SH G 182	Nenagh 3	GS-HC	GS-HC	GS-HC	GS-HC	GS-HC	NAR-HC	AR-LC	NAR-HC	NAR-HC	GS-HC	GS-HC	GS-HC	AR-LC	GS-HC	NAR-HC	GS-HC	NAR-HC	GS-HC	NAR-HC	GS-HC	NAR-HC	GS-HC	NAR-HC		GS-HC	GS-HC	Good	Protect
IE SH G 183	Nenagh 4	GS-HC	GS-HC	GS-HC	GS-HC	GS-HC	NAR-HC	AR-LC	NAR-HC	NAR-HC	GS-HC	GS-HC	GS-HC	AR-LC	GS-HC	NAR-HC	GS-HC	NAR-HC	GS-HC	NAR-HC	GS-HC	NAR-HC	GS-HC	NAR-HC		GS-HC	GS-HC	Good	Protect
IE SH G 184	Nenagh 5	GS-HC	GS-HC	GS-HC	GS-HC	GS-HC	NAR-HC	NAR-HC	NAR-HC	NAR-HC	GS-HC	GS-HC	GS-HC	NAR-LC	GS-HC	NAR-HC	GS-HC	NAR-HC	GS-HC	NAR-HC	GS-HC	NAR-HC	GS-HC	NAR-HC		GS-HC	GS-HC	Good	Protect
IE SH G 185	Nenagh 6	GS-HC	GS-HC	GS-HC	GS-HC	GS-HC	NAR-HC	AR-LC	NAR-HC	NAR-HC	GS-HC	GS-HC	GS-HC	AR-LC	GS-HC	NAR-HC	GS-HC	NAR-HC	GS-HC	NAR-HC	GS-HC	NAR-HC	GS-HC	NAR-HC		GS-HC	GS-HC	Good	Protect
IE SH G 186	Nenagh 7	GS-HC	GS-HC	GS-HC	GS-HC	GS-HC	NAR-HC	AR-LC	NAR-HC	NAR-HC	GS-HC	GS-HC	GS-HC	AR-LC	GS-HC	NAR-HC	GS-HC	NAR-HC	GS-HC	NAR-HC	GS-HC	NAR-HC	GS-HC	NAR-HC		GS-HC	GS-HC	Good	Protect
IE SH G 187	Nenagh 8	GS-HC	GS-HC	GS-HC	GS-HC	GS-HC	NAR-HC	AR-LC	NAR-HC	NAR-HC	GS-HC	GS-HC	GS-HC	AR-LC	GS-HC	NAR-HC	GS-HC	NAR-HC	GS-HC	NAR-HC	GS-HC	NAR-HC	GS-HC	NAR-HC		GS-HC	GS-HC	Good	Protect
IE SH G 188	Nenagh 9	GS-HC	GS-HC	GS-HC	GS-HC	GS-HC	NAR-HC	AR-LC	NAR-HC	NAR-HC	GS-HC	GS-HC	GS-HC	AR-LC	GS-HC	NAR-HC	GS-HC	NAR-HC	GS-HC	NAR-HC	GS-HC	NAR-HC	GS-HC	NAR-HC		GS-HC	GS-HC	Good	Protect
IE SH G 189	Nenaghurban	GS-HC	GS-HC	GS-HC	GS-HC	GS-HC	NAR-HC	NAR-HC	NAR-HC	NAR-HC	GS-HC	GS-HC	GS-LC	NAR-LC	GS-HC	NAR-HC	GS-HC	NAR-HC	GS-HC	NAR-HC	GS-HC	NAR-HC	GS-HC	NAR-HC		GS-HC	GS-LC	Good	Protect
IE SH G 190	Newcastle West	GS-LC	GS-HC	GS-HC	GS-HC	GS-HC	NAR-HC	NAR-HC	NAR-HC	NAR-HC	GS-HC	GS-HC	GS-HC	NAR-LC	Poor	AR-HC	GS-HC	NAR-HC	Poor	AR-HC	GS-HC	NAR-HC	GS-HC	NAR-HC		GS-LC	Poor	Poor	Restore 2021
IE SH G 191	Newcastlewest 1	GS-HC	GS-HC	GS-HC	GS-HC	GS-HC	NAR-HC	AR-LC	NAR-HC	NAR-HC	GS-HC	GS-HC	GS-HC	AR-LC	Poor	AR-HC	GS-HC	NAR-HC	Poor	AR-HC	GS-HC	NAR-HC	GS-HC	NAR-HC		GS-HC	Poor	Poor	Restore 2021
IE SH G 192	Newtown Forbes	GS-HC	GS-HC	GS-HC	GS-HC	GS-HC	NAR-HC	NAR-HC	NAR-HC	NAR-HC	GS-LC	GS-HC	GS-LC	NAR-LC	Poor	AR-HC	GS-HC	NAR-HC	Poor	AR-HC	GS-HC	NAR-HC	GS-HC	NAR-HC		GS-HC	Poor	Poor	Restore 2021
IE SH G 193	North Kilmallock	GS-HC	GS-HC	GS-HC	GS-HC	GS-HC	NAR-HC	NAR-HC	NAR-HC	NAR-HC	GS-HC	GS-HC	GS-HC	NAR-LC	Poor	AR-HC	GS-LC	AR-HC	Poor	AR-HC	GS-HC	NAR-HC	GS-HC	NAR-HC		GS-HC	Poor	Poor	Restore 2021
IE SH G 194	NorthKilmallock 1	GS-HC	GS-HC	GS-HC	GS-HC	GS-HC	NAR-HC	AR-LC	NAR-HC	NAR-HC	GS-HC	GS-HC	GS-HC	AR-LC	Poor	AR-HC	GS-LC	AR-HC	Poor	AR-HC	GS-HC	NAR-HC	GS-HC	NAR-HC		GS-HC	Poor	Poor	Restore 2021
IE SH G 195	Curlew Mountains 2	GS-HC	GS-HC	GS-HC	GS-HC	GS-HC	NAR-HC	NAR-HC	NAR-HC	NAR-HC	GS-HC	GS-HC	GS-HC	NAR-HC	GS-HC	NAR-HC	GS-HC	NAR-HC	GS-HC	NAR-HC	GS-HC	NAR-HC	GS-LC	AR-LC	SAC - 1571	GS-LC	GS-HC	Good	Protect
IE SH G 196	Pallas Grean	GS-HC	GS-HC	GS-HC	GS-HC	GS-HC	NAR-HC	NAR-HC	NAR-HC	NAR-HC	GS-HC	GS-HC	GS-HC	NAR-LC	Poor	AR-HC	GS-HC	NAR-HC	Poor	AR-HC	GS-HC	NAR-HC	GS-HC	NAR-HC		GS-HC	Poor	Poor	Restore 2021
IE SH G 197	Patrickswell	GS-HC	GS-HC	GS-HC	GS-HC	GS-HC	NAR-HC	NAR-HC	NAR-HC	NAR-HC	GS-HC	GS-HC	GS-HC	NAR-LC	GS-LC	NAR-LC	GS-LC	NAR-LC	GS-LC	NAR-LC	GS-LC	NAR-LC	GS-HC	NAR-HC		GS-HC	GS-LC	Good	Protect

