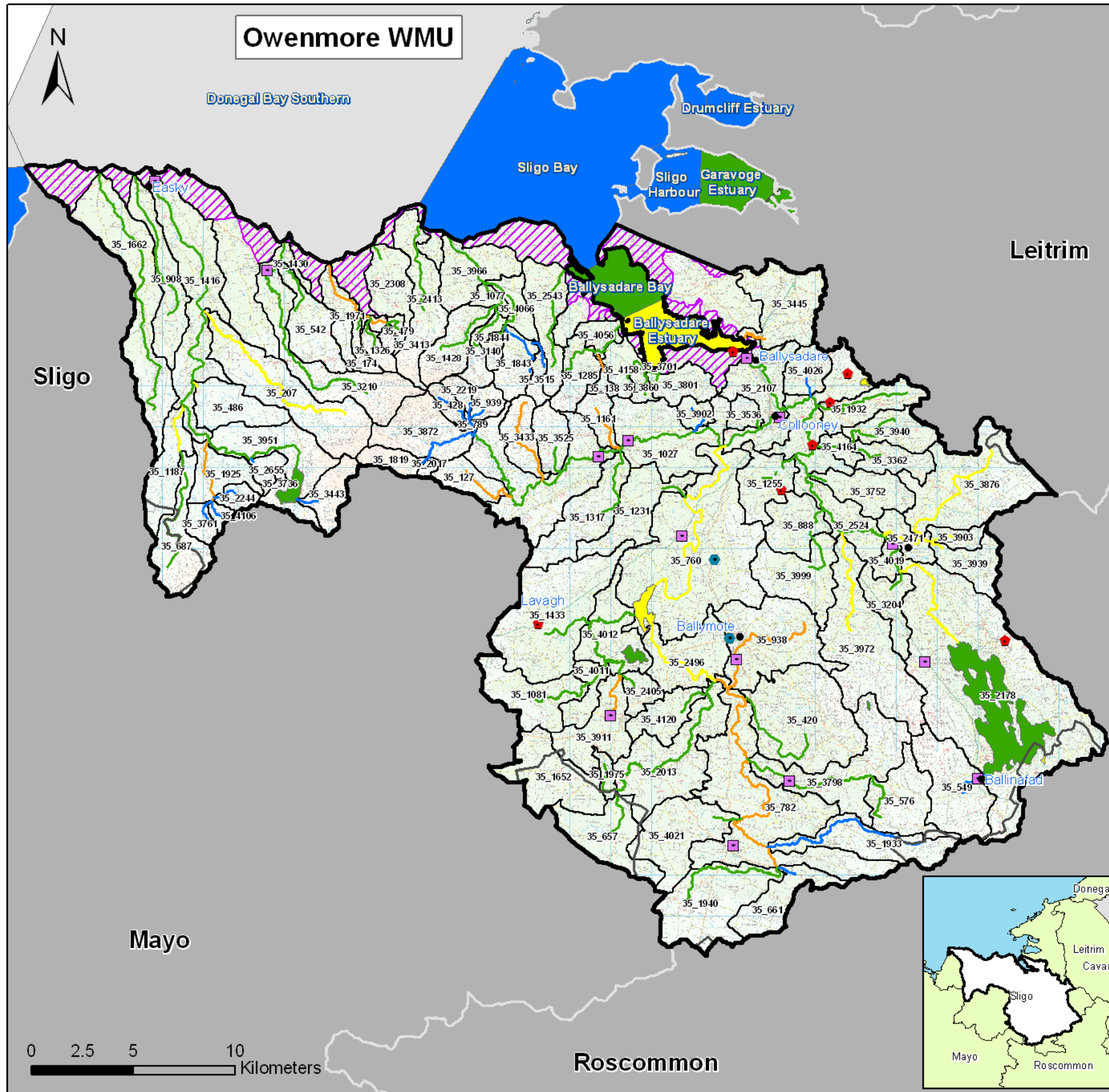

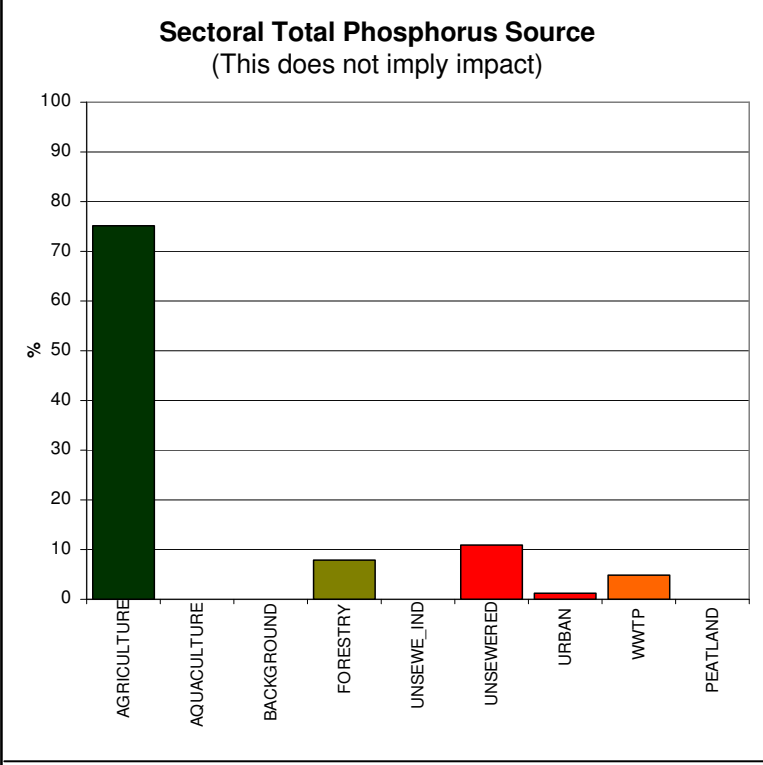
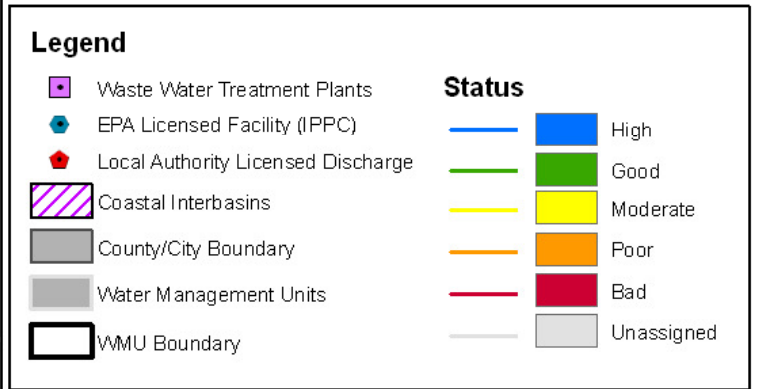


Owenmore Water Management Unit Action Plan

River water bodies labelled on map

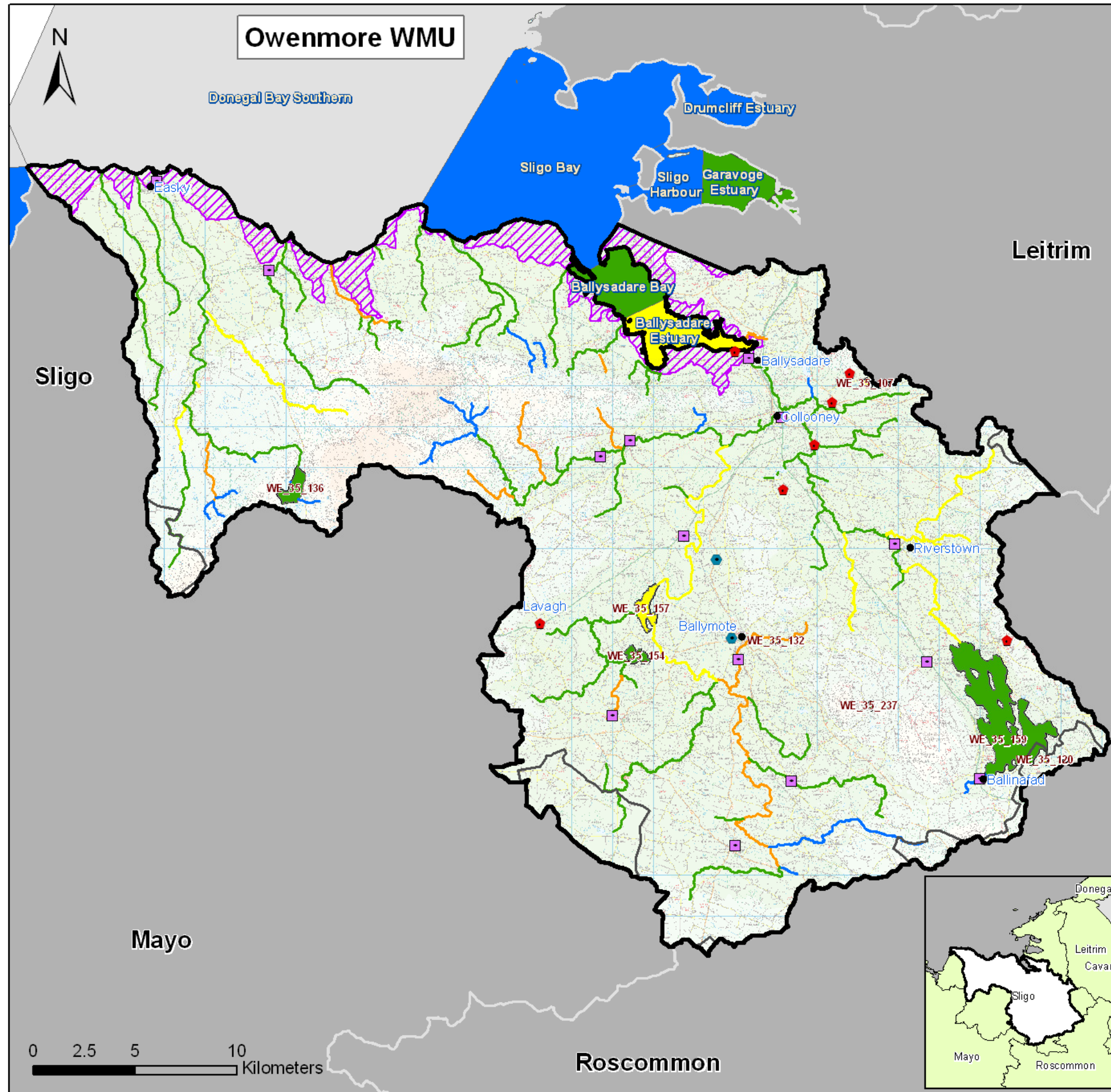


Owenmore Water Management Unit	
Area	976 km ²
River Basin District	Western RBD
Main Counties	Leitrim/Sligo
Number of river water bodies	100
Number of lake water bodies	8



Owenmore Water Management Unit Action Plan

Lake water bodies labelled on map



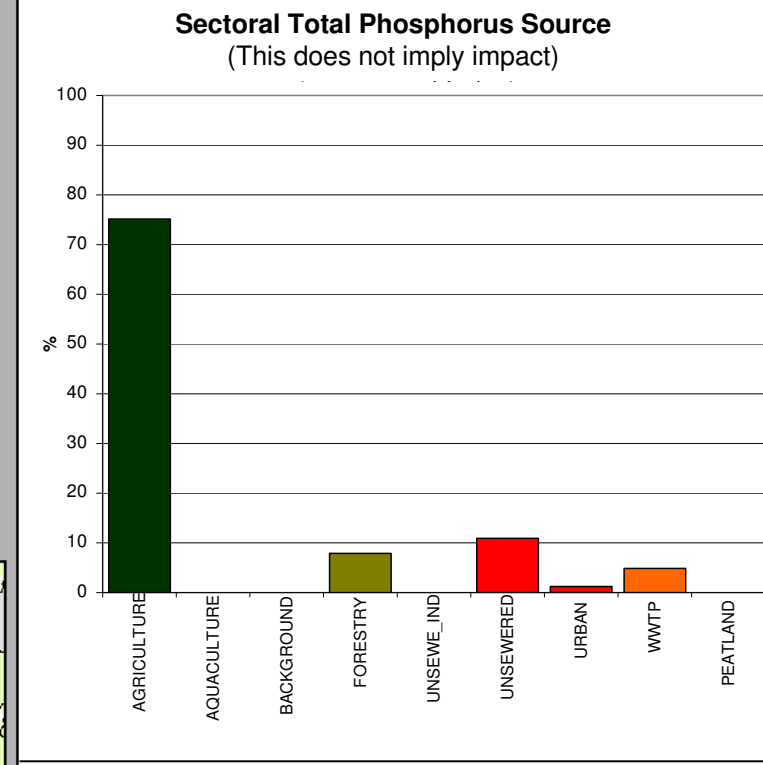
Owenmore Water Management Unit	
Area	976 km ²
River Basin District	Western RBD
Main Counties	Leitrim/Sligo
Number of river water bodies	100
Number of lake water bodies	8

Legend

- Waste Water Treatment Plants
- EPA Licensed Facility (IPPC)
- Local Authority Licensed Discharge
- Coastal Interbasins
- County/City Boundary
- Water Management Units
- WMU Boundary

Status

- High
- Good
- Moderate
- Poor
- Bad
- Unassigned



© Ordnance Survey Ireland. All rights reserved. Licence number 2010/15CCMA/Galway County Council.

March 2010

Owenmore Water Management Unit Action Plan

PROTECTED AREAS

SACs -12: Doocastle Turlough, Flughany Bog, Ballysadare Bay, Templehouse and Cloonacleigha Loughs, Turloughmore (Sligo), Union Wood, Bricklieve Mountains & Keishcorran, Knockalongy and Knockachree Cliffs, Lough Arrow, Unshin River, Cloonakillina Lough, Ox Mountains Bogs .

SPAs – 3: Aughris Head SPA Ballysadare Bay , Lough Arrow SPA

NHA – 1: Slieveward Bog NHA

pNHAs – 23: Aughris Head, Easky River, Ballysadare Bay, Knocknarea Mountain And Glen, Dunneill River, Knockalongy And Knockachree Cliffs, Union Wood, Ballygawley Lough, Ox Mountains Bogs, Lough Dargan, Unshin River, Knockmullin Fen, Fin And Riskeen Loughs, Meharth Lough, Templehouse And Cloonacleigha Loughs, Lough Arrow, Bricklieve Mountains & Keishcorran, Turloughmore (Sligo), Feenagh And Bunnamuck Loughs, Quarryfield West Turlough, Flughany Bog, Doocastle Turlough, Cloonakillina Lough.

Nutrient Sensitive Surface Water (UWWT Directive) – none

Surface drinking waters – 3: Easky Lough, Arrow Lough, Labe Lough.

Bathing Waters - none

Shellfish Waters - none

STATUS/IMPACTS

Overall status	The majority of the river water bodies are at High (20) or Good (59) status with some river water bodies, such as the main channel of the Owenmore and upper reaches of the Unshin River, at Moderate (11) or Poor (10) status. For the 8 lakes within the WMU 4 are at Moderate status and 4 are at Good status .
----------------	--

Status elements	For river water bodies Q values (macroinvertebrates) dictates status for the most part with fish data and physio-chemical data determining status on only 3 rivers. All rivers pass on all physio-chemical monitoring and there is no chemical monitoring within the WMU. For 7 of the lakes within the WMU the macrophytes and nutrient concentrations dictate the overall status combined with expert opinion in some cases. Templehouse lake which is at bad status is dictated by macrophyte and total phosphorus status.
-----------------	---

Status of the main rivers within the WMU	<p>The main rivers in the Owenmore WMU are the Owenmore river system, the Arrow (Unshin) river system, the Owenbeg and Easky river system and the Ballysadare river.</p> <p>The most recent EPA status classifications for these rivers indicates that only 9% of all river channel length is of High status and 63% is classed as Good. The remainder are classed at moderate, (16%) poor (12%).</p> <p>OWENMORE – The headwaters of the Owenmore river are at Good status. The Liskeagh tributary joining the main Owenmore channel is at High status, however the first section of the Owenmore River is at Poor status (poor biological assessment). The Black River (Clooneen river) and the Owenbeg River flowing into the main Owenmore channel are at Good status. The river flowing into and out of Bellanascarrow Lough (east of Ballymote) is at Poor status (biological assessment). The lake itself is a Moderate status. The section of main channel from the confluence of the Clooneen River to Templehouse Lough is at Moderate status. Templehouse Lough is classed at moderate status. The section of river from the lake to the confluence of the Owenbeg River is at Moderate status. The latter section of the Owenmore river, flowing through Collooney is at Good status.</p> <p>UNSHIN (ARROW) – The river flowing into Lough Arrow at Ballinafad is at High status. Lough Arrow is at Good status, and the small lake, Lough Arkedy to the south of Louth Arrow is at Moderate status. The stretch of river from Lough Arrow is at Moderate status until it joins the Unshin river at Ardkeeran Townland.. The Douglas river is classed at Moderate status and joins the main channel downstream of Riverstown. The Drumflin tributary joins the Unshin river at Drumflin and is at Moderate status. From here, to where the Unshin meets the Ballysadare river, nearly all tributaries and the main channel are at Good status. There is a short stretch after Ballydawley which is at High status. Dargan Lough, near Ballydawley is at Moderate status. There is a local authority pumping station which may be impacting on water quality status at the sampling location (North Bridge in Riverstown).</p> <p>OWENBOY – The head waters of the Owenbeg River system rises in the Ox Mountains and are all at High status. The tributaries join at Glenmore to form the Owenboy river, the main channel of which is classed at Good status throughout the river system. Some tributaries are classed at Poor status at Carrowmurray, Ballinvally and at Seevness. The Owenboy meets the Owenmore river at Annagh Beg.</p> <p>EASKY – The head waters of the Easky River entering Easky Lough are at High status. Lough Easky itself is at Good status, and so too is all of the main channel of the Easky River at Good status, up until it enters the sea at Easky. A small tributary entering the main channel downstream of the lake is at High status. The Owenwee river is a tributary of the Easky. Its head waters are at High status, but the main Owenwee channel itself is at Poor status (extrapolation from similar monitored water body). The Gowlan river is another tributary of the Easky river. The upper part of this river is at Good status, and the lower part of the river, where it joins the main Easky river is at Moderate status. The Buncrowey tributary joining the Easky is also at Moderate status. Lough Easky Water Treatment Plant may be having an impact of the water quality in the Buncrowey River (WE_35_207).</p> <p>FINNED – The river Finned flows to the sea and is classed at Good status.</p> <p>BALLYBEG – Bally Beg river (Owenbeg) flows to the sea and is classed at Good status.</p> <p>DUNNEILL – The Dunneill river network flows to the sea and is classed at Good status.</p> <p>LUGDOON – The small tributaries of the Lugdoon stream are classed at good status, however, the main channel of the Lugdoon which flows to the sea is classed at poor status (based of biological assessment).</p> <p>DOONFLIN – The Doonflin river flows to the sea and is at Good status.</p> <p>ARDNAGLASS – The Ardnaglass river system is mainly at Good status, with the head waters, the Dunmoran river at High status. The Ardnaglass flows to the sea at Sligo Bay.</p>
--	--

Owenmore Water Management Unit Action Plan

PRESSURES/RISKS	
Nutrient sources	Over 93% of Total Phosphorus generated in the WMU is diffuse in nature with agriculture accounting for over 75% of diffuse TP.
Point pressures	WWTPs – 14: Ballinacarrow, Ballinafad, Ballisodare, Ballymote, Buninadden, Castlebaldwin, Collooney, Coolaney, Culfadda, Dromore West, Easkey, Gurteen, Riverstown, Rockfield Section 4 Licensed facilities – 7: (Dairy, 3 hotels, residential centre, quarry, housing estate) IPPC Licences facilities -2: (pharmaceutical company discharging to sewer and a piggery) Water Treatment Plants (WTP) – 7: Easkey WTP and Riverstown WTP, Beltra GWS, Castlebladwin GWS, Culfadda GWS, Keash GWS and Lecarrow GWS. End of Life Vehicle facility in Carrowgobbadagh.
Wastewater Treatment Plants (WWTP) and Industrial Discharges	Ballinacarrow – Being upgraded to 1500 p.e. Ballinafad – To be upgraded as part of the T/G/S dbo bundle Ballymote WWTP - requires capital works, implementation of an appropriate performance management system and investigation of CSO. Ensure capacity of plant is not exceeded. Buninadden - To be upgraded under small schemes programme Collooney WWTP – requires capital works Easkey WWTP - ensure capacity of plant is not exceeded. .Upgrade works completed as part of the Ennsicrone WWTW DBO bundle. Gurteen WWTP - requires implementation of an appropriate performance management system Riverstown WWTP - requires implementation of an appropriate performance management system and investigation of CSO Ensure capacity of plant is not exceeded. There is a possible risk to water quality relating to insufficient assimilative capacity from the residential centre at Cloonamahon. Piggery (IPPC) could impact water quality from the land spreading of slurry. There is a possible risk from the discharge from the ELV site.
Quarries, Mines & Landfills	There are 3 quarries within WMU: (Harrinton Concrete, Scotts and Moygara Sands) 1 historic mine within WMU – Abbeytown. There is a historic landfill on the outskirts of Ballymote Village at Woodfield which has been closed since the early 1990's. There is no leachate collection facility in place.
Agriculture	21 water bodies have been determined to be at risk from Agriculture within the WMU - IE_WE_35_1662, IE_WE_35_2013, IE_WE_35_938, IE_WE_35_782, IE_WE_35_207, IE_WE_35_3445, IE_WE_35_479, IE_WE_35_3999, IE_WE_35_1433, IE_WE_35_1317, IE_WE_35_4120, IE_WE_35_2405, WE_35_420, IE_WE_35_888, IE_WE_35_1255, IE_WE_35_2543, IE_WE_35_2308, IE_WE_35_3204, IE_WE_35_4158, IE_WE_35_3752, IE_WE_35_4012.
On-site systems	There are 8,186 OSWTS within the WMU Boundary, 7,118 OSWTS lie within 100 river water bodies. Within the river water bodies 472 OSWTS constitute a potential risk to waters because of where they are sited and constitute a risk to 2 water bodies. The remainder of OSWTS lie in the coastal area between the RWBs and the seashore and may pose a risk to estuarine and coastal water quality and protected areas. At risk RWB's: WE_35_938, WE_35_1932
Forestry	There are 7 water bodies that have been determined to be at risk fro forestry within the WMU: IE_WE_35_1933, IE_WE_35_1161, IE_WE_35_2219, IE_WE_35_127 , IE_WE_35_939, IE_WE_35_3140 , IE_WE_35_2244. Possible risk associated with forestry in the following river catchments: - Upper Owenboy river catchment (Upstream of Carrownabanny Bridge) - Upper Buncrowey river catchment (WE_35_207) specifically the Owenminna & Crowagh river tributaries of Buncrowey river - Owenaher river (WE_34_882) specifically upstream of Bellanagraugh Bridge.
Dangerous substances	There is a possible risk from an old mine tailings in Abbeytown, an ELV site and an old landfill site.
Morphology	There are 9 water bodies at risk from morphology within the WMU: IE_WE_35_2013, IE_WE_35_1077, IE_WE_35_420, IE_WE_35_782, IE_WE_35_1255, IE_WE_35_4066, IE_WE_35_2496, IE_WE_35_3966, IE_WE_35_4012. Possible risk to the Ballysadare River (35_2107)

PRESSURES / RISKS	
Abstractions	Lough Arrow – used as an abstraction source for 3 group water supply schemes. Riverstown – groundwater abstraction for use in Riverstown public water supply is abstracted from a well/spring in proximity to the northern shore of Lough Arrow.
Other	There are no HMWB or AWB within the WMU.

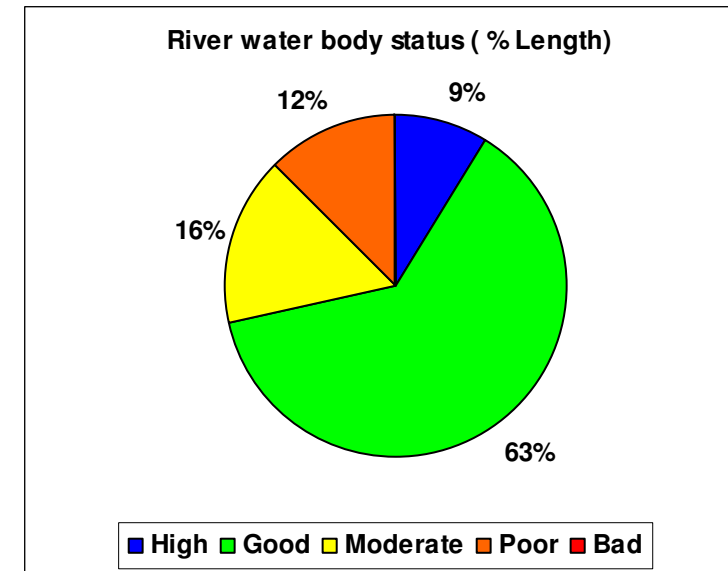
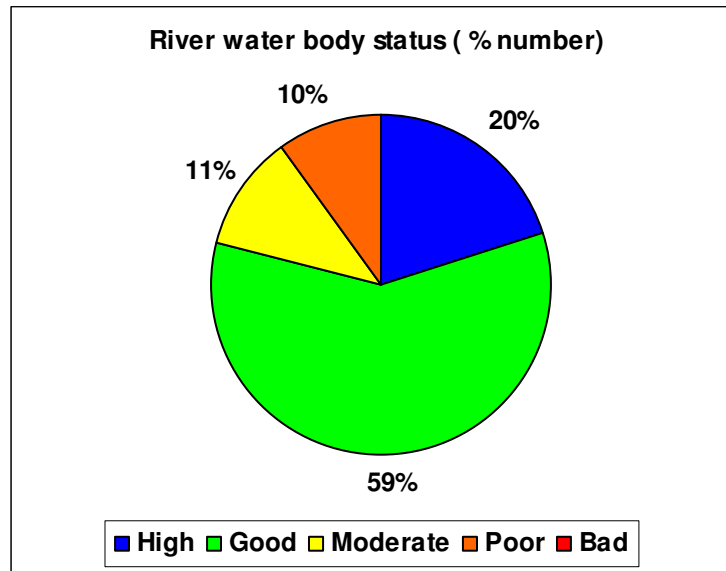
Owenmore Water Management Unit Action Plan

SELECTED ACTION PROGRAMME	
<i>NB All relevant basic measures and general supplementary measures/surveys apply</i>	
Point Sources	<p>WWTP licensing and upgrades will be applied where identified in the needs assessment. Ballymote WWTP has been prioritised for capital works upgrades as these schemes are necessary to ensure compliance with the Water Framework Directive. Coolloney, Ballymote & Ballinacarrow have been prioritised under the 2009 needs assessment for inclusion on the WSIP 2010–2012. Investigation of sewage and trade discharges and licence review where appropriate will also be carried out. The following Point source supplementary measures have been suggested for certain river water bodies within the WMU for municipal and industrial pressures: Capital works, Investigation prior to capital works, Implementation of pollution reduction programmes for Shellfish Waters, Implementation of an Appropriate Performance Management System, Investigation of CSO's and Ensure Capacity of treatment plant is not exceeded.</p>
Diffuse Sources	<p>Particular measures will be required to address diffuse pollution pressures from agriculture such as the Good Agricultural Practices Regulations investigations and enforcement.</p> <p>Supplementary measures apply within WMU for septic tanks (OSWWTS) including compliance with the new binding EPA Code of Practice for Wastewater Treatment Systems and Disposal Systems.</p> <p>In relation to existing unsewered properties, improvements are required regarding the operational performance, maintenance and monitoring arrangements of septic tanks and other on-site waste water treatment systems serving such properties. In response, the Minister for Environment, Heritage and Local Government intends to bring forward and consult on proposals for legislation during 2010. It is intended that this legislation will be in place by quarter 3 of 2010. The proposed legislation will provide standards for the performance, operation and maintenance of septic tanks and similar on-site wastewater treatment systems. It will also provide for the monitoring and inspection of the performance of such treatment systems and will set out the responsibilities of households served by those systems, including requirements to carry out remedial actions where necessary.</p> <p>Supplementary measures that apply for forestry include: Riparian zone management, enhancement of sediment control and drainage management for both eutrophication and sedimentation for the following water bodies WE_35_789, WE_35_1161, WE_35_2219, WE_35_127, WE_35_939, WE_35_3140 and WE_35_2244..</p>
Other	<p>Supplementary measures that apply to address morphological pressures include: Channelisation investigation so that any impact on status caused by past drainage schemes in the WMU can be determined and addressed. The following water bodies have channelisation investigation assigned as a supplementary measure for morphology: WE_35_420, WE_35_4066, WE_35_2496, WE_35_3966 and WE_35_4012.</p> <p>Protection of drinking waters and future abstraction licensing control will also be important basic measures required to ensure good water quality. Further investigation of quarry risk is needed before measures can be identified.</p>

OBJECTIVES	
Good status 2015	
Alternative Objectives	<p>Heavily Modified/Artificial water bodies - None.</p> <p>Extensions Agriculture (Phosphorous Karst Groundwater) (2021) IE_WE_35_486, IE_WE_35_3876 IE_WE_35_1187, IE_WE_35_3972, IE_WE_35_207, IE_WE_35_2496, IE_WE_35_760, IE_WE_35_2471, IE_WE_35_3903, IE_WE_35_3939, IE_WE_35_2178, IE_WE_35_1971, IE_WE_35_782, IE_WE_35_1925, IE_WE_35_3911, IE_WE_35_3445, IE_WE_35_938</p> <p>Extensions required for wastewater infrastructure to be put in place (2021) IE_WE_35_938</p> <p>Extensions for Status Recovery due to prolonged timescale for improvement to allow measures to become effective (Poor and Bad status water bodies) (2021) IE_WE_35_138, IE_WE_35_1161, IE_WE_35_127, IE_WE_35_3433</p>

Owenmore Water Management Unit Action Plan

Status of river water bodies within the WMU



IE_WE_Owenmore																	
Member State Code	Monitored Y (Extrapolated N)	Donor Waterbody	Biological Elements				Supporting Elements				Protected Areas					Objective	Date objective to be achieved
			Macroinvertebrates (Q)	Freshwater Pearl Mussel	Fish	Phytoplankton (Diatoms)	Morphology	Specific Pollutants	Physio-chemical	Ecological Status	Chemical Status	Special Area of Conservation	Special Protection Area	Nutrient Sensitive Waters	Drinking Water		
WE_35_1027	Y		G						H	G		Y				GES	2009
WE_35_1077	N	WE_35_3966								G						GES	2009
WE_35_1081	N	WE_35_657								G		Y				GES	2009
WE_35_1161	N	WE_34_3086								P						GES	2021
WE_35_1187	Y		G		M				H	M		Y				GES	2021
WE_35_1231	Y		G							G						GES	2009
WE_35_1255	N	WE_35_2013								G						GES	2009
WE_35_127	N	WE_34_3086								P		Y				GES	2021
WE_35_1285	N	WE_35_1027								G						GES	2009
WE_35_1317	N	WE_35_2013								G						GES	2009
WE_35_1326	N	WE_35_3951								G						GES	2009
WE_35_138	N	WE_34_3086								P						GES	2021
WE_35_1416	Y		G						H	G		Y				GES	2009
WE_35_1428	N	WE_35_3966								G		Y				GES	2009
WE_35_1430	Y		G						H	G						GES	2009
WE_35_1433	N	WE_35_2013								G		Y				GES	2009
WE_35_1652	N	WE_35_657								G		Y				GES	2009

Owenmore Water Management Unit Action Plan

IE_WE_Owenmore																
Member State Code	Monitored Y (Extrapolated N)	Donor Waterbody	Biological Elements				Supporting Elements				Protected Areas				Objective	Date objective to be achieved
			Macroinvertebrates (Q)	Freshwater Pearl Mussel	Fish	Phytobenthos (Diatoms)	Morphology	Specific Pollutants	Physio-chemical	Ecological Status	Chemical Status	Special Area of Conservation	Special Protection Area	Nutrient Sensitive Waters		
WE_35_1662	Y		G						H	G		Y			GES	2009
WE_35_174	N	WE_35_3951								G					GES	2009
WE_35_1819	N	WE_34_3552								H		Y			HES	2009
WE_35_1843	Y		H							H					HES	2009
WE_35_1844	N	WE_35_3966								G					GES	2009
WE_35_1925	N	WE_34_3086								P		Y			GES	2021
WE_35_1932	N	WE_35_2107								G		Y			GES	2009
WE_35_1933	Y		H							H					HES	2009
WE_35_1940	Y		G						H	G					GES	2009
WE_35_1971	Y		P							P					GES	2021
WE_35_1975	N	WE_35_657								G					GES	2009
WE_35_2013	Y		G						H	G		Y			GES	2009
WE_35_2017	N	WE_34_3552								H		Y			HES	2009
WE_35_207	Y		M						H	M		Y			GES	2021
WE_35_2107	Y		G				G		G	G		Y	Y		GES	2009
WE_35_2178	Y		M						H	M		Y	Y		GES	2021
WE_35_2219	N	WE_34_2850								H					HES	2009
WE_35_2244	N	WE_34_2850								H					HES	2009
WE_35_2308	N	WE_35_1662								G					GES	2009
WE_35_2405	N	WE_35_2013								G					GES	2009
WE_35_2413	Y		G						G	G					GES	2009
WE_35_2471	Y		M							M		Y			GES	2021
WE_35_2496	Y		M						H	M					GES	2021
WE_35_2524	Y		G						H	G		Y			GES	2009
WE_35_2543	N	WE_35_1662								G					GES	2009
WE_35_2655	N	WE_34_3552								H		Y			HES	2009
WE_35_3140	N	WE_35_1662								G					GES	2009
WE_35_3204	N	WE_35_2013								G					GES	2009
WE_35_3210	Y		H		G				H	G		Y			GES	2009
WE_35_3362	N	WE_35_2107								G					GES	2009

Owenmore Water Management Unit Action Plan

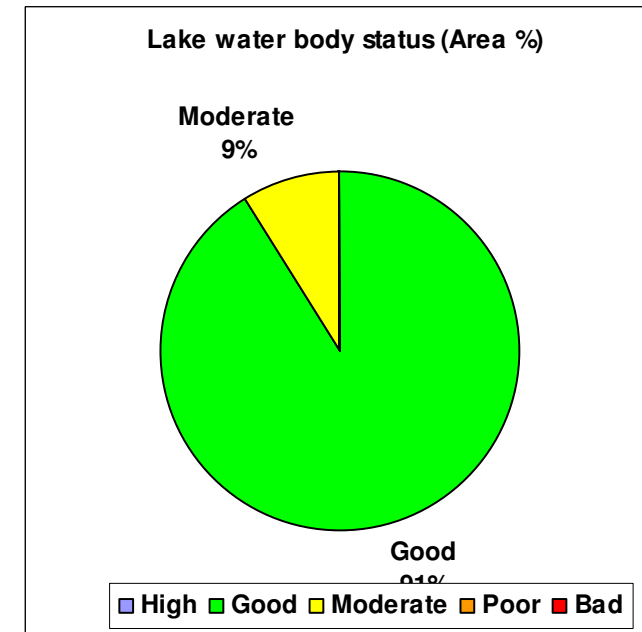
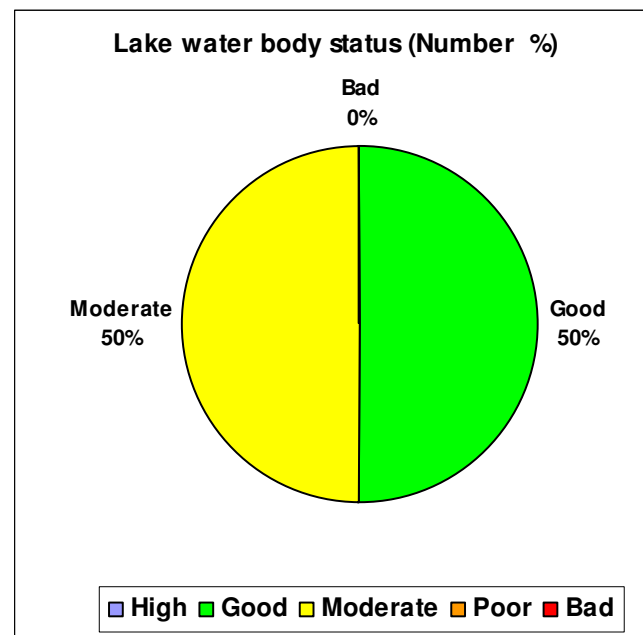
IE_WE_Owenmore																		
Member State Code	Monitored Y (Extrapolated N)	Donor Waterbody	Biological Elements				Supporting Elements				Ecological Status	Chemical Status	Protected Areas				Objective	Date objective to be achieved
			Macrobenthos (Q)	Freshwater Pearl Mussel	Fish	Phytoplankton (Diatoms)	Morphology	Specific Pollutants	Physio-chemical	Special Area of Conservation			Special Protection Area	Nutrient Sensitive Waters	Drinking Water			
WE_35_3413	N	WE_35_3951														GES	2009	
WE_35_3433	N	WE_34_3086														GES	2021	
WE_35_3443	N	WE_34_3552										Y				HES	2009	
WE_35_3445	N	WE_35_938											Y			GES	2021	
WE_35_3515	N	WE_35_1843														HES	2009	
WE_35_3525	N	WE_34_882														GES	2009	
WE_35_3536	N	WE_35_2107														GES	2009	
WE_35_3701	N	WE_35_1027											Y			GES	2009	
WE_35_3736	N	WE_34_3552										Y				HES	2009	
WE_35_3752	N	WE_35_2013										Y				GES	2009	
WE_35_3761	N	WE_34_3552										Y				HES	2009	
WE_35_3798	Y									G		Y				GES	2009	
WE_35_3801	N	WE_35_1027														GES	2009	
WE_35_3860	N	WE_35_2013														GES	2009	
WE_35_3872	N	WE_34_2850										Y				HES	2009	
WE_35_3876	N	WE_35_2178														GES	2021	
WE_35_3902	N	WE_34_3552														HES	2009	
WE_35_3903	N	WE_35_2178														GES	2021	
WE_35_3911	Y		P							H		P				GES	2021	
WE_35_3939	N	WE_35_2471														GES	2021	
WE_35_3940	N	WE_35_2107														GES	2009	
WE_35_3951	Y		G									Y				GES	2009	
WE_35_3966	Y		G													GES	2009	
WE_35_3972	Y		M							H		Y				GES	2021	
WE_35_3999	N	WE_35_2013														GES	2009	
WE_35_4011	N	WE_35_657														GES	2009	
WE_35_4012	N	WE_35_2013										Y				GES	2009	
WE_35_4019	Y		G							H		Y				GES	2009	
WE_35_4021	N	WE_35_657										Y				GES	2009	
WE_35_4026	N	WE_34_2850										Y				HES	2009	

Owenmore Water Management Unit Action Plan

IE_WE_Owenmore																	
Member State Code	Monitored Y (Extrapolated N)	Donor Waterbody	Biological Elements				Supporting Elements				Protected Areas					Objective	Date objective to be achieved
			Macroinvertebrates (Q)	FreshWater Pearl Mussel	Fish	Phytobenthos (Diatoms)	Morphology	Specific Pollutants	Physio-chemical	Ecological Status	Chemical Status	Special Area of Conservation	Special Protection Area	Nutrient Sensitive Waters	Drinking Water		
WE_35_4056	N	WE_35_1027									G		Y	Y		GES	2009
WE_35_4066	N	WE_35_3966									G					GES	2009
WE_35_4106	N	WE_34_2850									H		Y			HES	2009
WE_35_4120	N	WE_35_2013									G					GES	2009
WE_35_4158	N	WE_35_2013									G		Y	Y		GES	2009
WE_35_4164	N	WE_35_2107									G					GES	2009
WE_35_420	N	WE_35_2013									G		Y			GES	2009
WE_35_428	N	WE_34_2850									H		Y			HES	2009
WE_35_479	N	WE_35_1662									G					GES	2009
WE_35_486	N	WE_35_1187									M		Y			GES	2021
WE_35_542	Y		G								G		Y			GES	2009
WE_35_549	N	WE_35_1933									H		Y			HES	2009
WE_35_576	N	WE_35_3798									G		Y			GES	2009
WE_35_657	Y		G								G		Y			GES	2009
WE_35_661	N	WE_35_1933									H					HES	2009
WE_35_687	N	WE_35_3951									G		Y			GES	2009
WE_35_760	Y		M							H	M		Y			GES	2021
WE_35_782	Y		P							G	P					GES	2021
WE_35_789	N	WE_34_2850									H					HES	2009
WE_35_888	N	WE_35_2013									G					GES	2009
WE_35_908	N	WE_35_1416									G					GES	2009
WE_35_938	Y		P							H	P					GES	2021
WE_35_939	N	WE_34_2850									H					HES	2009

Owenmore Water Management Unit Action Plan

Status of lake water bodies within WMU



IE_WE_Owenmore																	
Member State Code	Name	Monitored Y (Extrapolated N)	Biological Elements			Supporting Elements			Ecological Status	Chemical Status	Protected Areas					Objective	Date objective to be achieved
			Macrophytes	Chlorophyll	Fish	Morphology	Nutrient Enrichment	Physico Chemical			Special Area of Conservation	Special Protection Area	Nutrient Sensitive Waters	Bathing Water	Drinking Water		
WE_35_107	Dargan (Lough)	N						M							Y	GES	2015
WE_35_120	Arkedy (Lough)	N						M		Y						GES	2021
WE_35_132	Bellanascarrow Lough	N						M							Y	GES	2021
WE_35_136	Easky Lough	Y	H	H			G	G	G	Y					Y	GES	2009
WE_35_154	Cloonacleigha Lough	Y	G					G		Y						GES	2009
WE_35_157	Templehouse Lough	Y	M	H	M		M	M	M	Y						GES	2021
WE_35_159	Arrow (Lough)	Y	G	H			G	G	G	Y	Y				Y	GES	2009
WE_35_237	Labe (Lough)	N						G		Y					Y	GES	2009