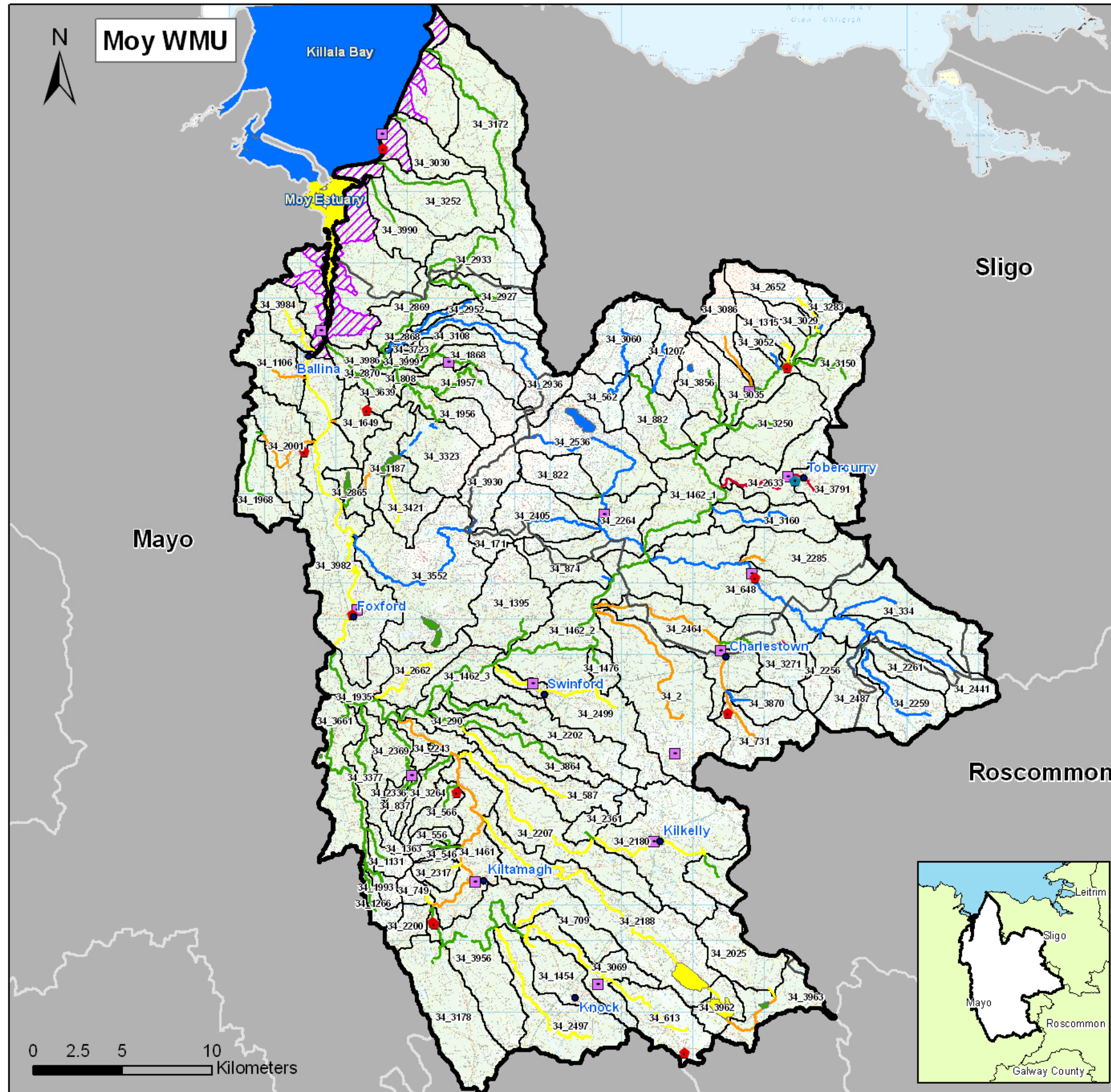


# Moy Water Management Unit Action Plan

River water bodies labelled on map



<b>Moy Water Management Unit</b>	
<b>Area</b>	1,356 km <sup>2</sup>
<b>River Basin District</b>	Western RBD
<b>Main Counties</b>	Mayo/Sligo
<b>Number of river water bodies</b>	112
<b>Number of lake water bodies</b>	10

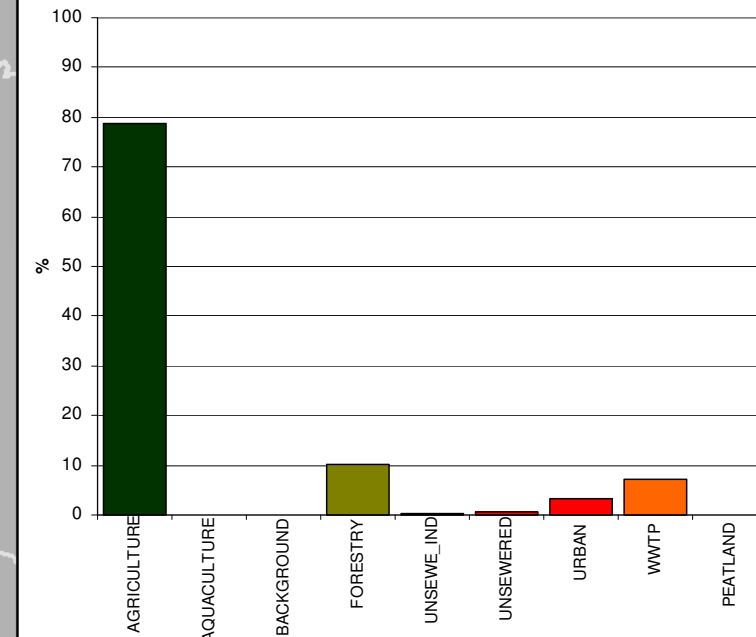
**Legend**

- Waste Water Treatment Plants
- EPA Licensed Facility (IPPC)
- Local Authority Licensed Discharge
- Coastal Interbasins
- County/City Boundary
- Water Management Units
- WMU Boundary

**Status**

- High
- Good
- Moderate
- Poor
- Bad
- Unassigned

**Sectoral Total Phosphorus Source**  
(This does not imply impact)

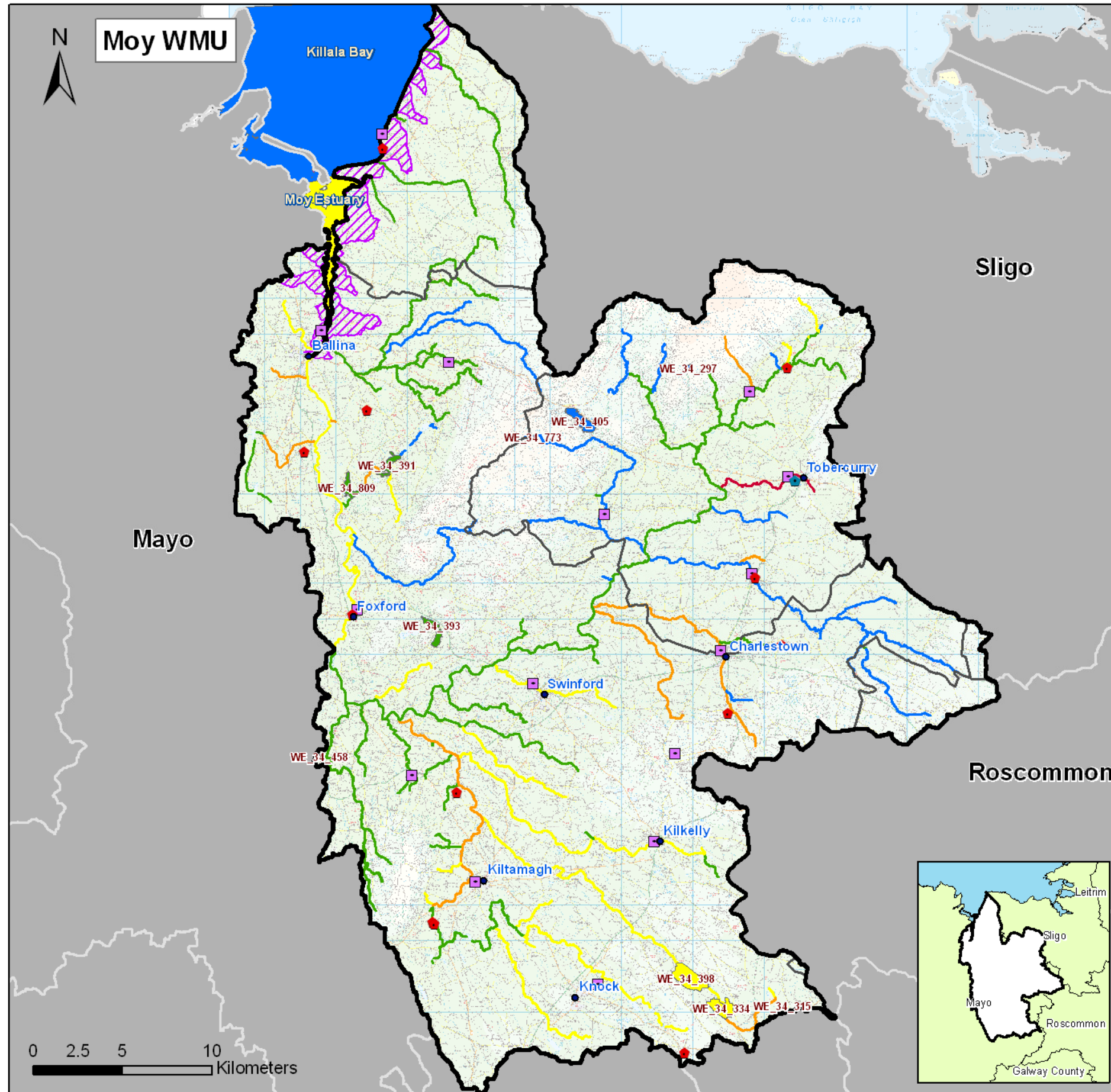


© Ordnance Survey Ireland. All rights reserved. Licence number 2010/15CCMA/Galway County Council.

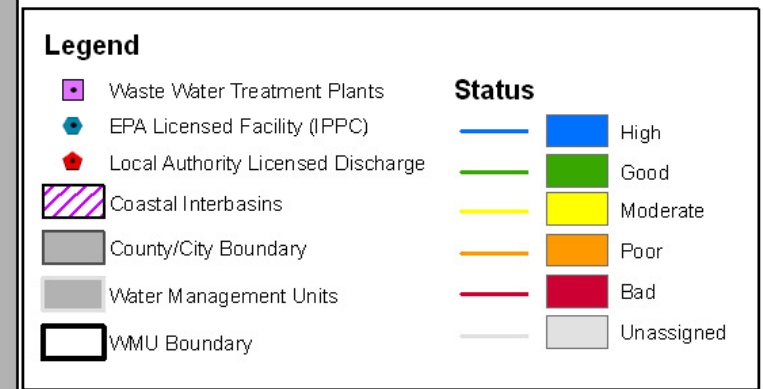
March 2010

# Moy Water Management Unit Action Plan

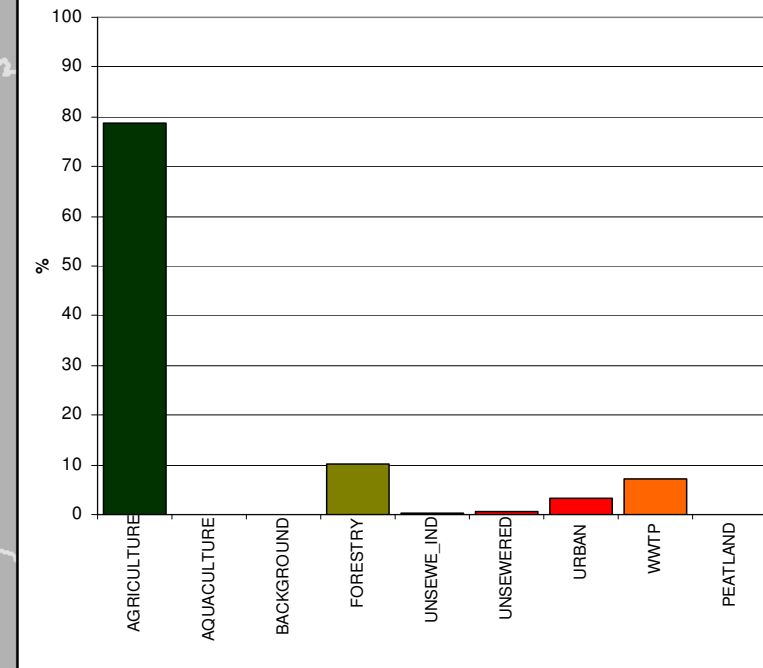
Lake water bodies labelled on map



<b>Moy Water Management Unit</b>	
<b>Area</b>	1,356 km <sup>2</sup>
<b>River Basin District</b>	Western RBD
<b>Main Counties</b>	Mayo/Sligo
<b>Number of river water bodies</b>	112
<b>Number of lake water bodies</b>	10



**Sectoral Total Phosphorus Source**  
(This does not imply impact)



© Ordnance Survey Ireland. All rights reserved. Licence number 2010/15CCMA/Galway County Council.

March 2010

# Moy Water Management Unit Action Plan

PROTECTED AREAS		PRESSURES/RISKS					
<p><b>SACs</b> – 5: Killala Bay/ Moy Estuary, Lough Hoe Bog, Lough Nabrickkeagh Bog, Ox Mountains Bogs, River Moy.  <b>SPA</b> – 1: Killala Bay/Moy Estuary SPA.  <b>pNHA's</b> – 14: Ox Mountains Bogs, Lough Hoe Bog, Lough Alick, Moy Valley, Gowlaun Bog, Tawnaghbeg Bog, Kilgarriff Bog, Derrynabrock Bog, Killaturly Turlough, Mannin and Island Lakes, Killala Bay/Moy Estuary, Lough Nabrickkeagh Bog, Moylough Turlough and Cloongoonagh Bog.  <b>Nutrient Sensitive Surface Water (UWWT Directive)</b> - none  <b>Surface Drinking Water</b> – 3: Lakes – Lough Talt, Lough Holan and one unnamed.                      21: Rivers - Sonnagh River, Gweestion River, Srafaungal River, Trimoge River, Trib of Trimmoge River, Glore River, Spaddagh River, Owenlobnaglaun River, Owencam River, Yellow River, Strade River, Mannin River, River Moy, Trib of River Moy, Creeganlar River, River discharging to Lough Caheer, Trib of Coarse River, River discharging to Cultybo Lough, Trib of Geestaun river discharging from Carrigeen Lough.  <b>Bathing Water</b> – 1: Enniscrone.  <b>Shellfish Waters</b> - 1: Killala Bay has a designated Shellfish Water Area</p>		<table border="1" style="width: 100%; border-collapse: collapse;"> <tr> <td style="width: 15%; padding: 5px;">Nutrient sources</td> <td style="padding: 5px;">Over 80% of Total Phosphorus generated in the catchment is diffuse in nature with agriculture accounting for over 70% of TP.</td> </tr> <tr> <td style="padding: 5px;">Point pressures</td> <td style="padding: 5px;"> <p><b>WWTP – 15:</b> 10 WWTP in Mayo: Ballina, Bohola, Bunnyconnellan, Charlestown, Foxford, Kilkelly, Kiltimagh, Knock Airport, Knock, Swinford.                      5 WWTP in Sligo: Aclare, Curry, Enniscrone, Cloonacool and Tubbercurry.  <b>Section 4 Licensed Facilities– 12 :</b> Mayo: 9 Section 4 licenses – Western Care (St John's Centre), St. Attracta's Nursing Home, Western Care, Breaffy National School, Mount Falcon Castle, T J Grady Ltd, Providence Woollen Mills, O'Dwyer Cheshire Home, Western Brand Chickens – all discharging to groundwater.                      Sligo: 3 Section 4's licensed facilities (Hotel, fish farm &amp; seaweed baths)  <b>IPPC Licensed Facilities</b> – 1: Sligo: Basta 1 IPPC (at Proposed Determination Stage)  <b>WTP</b> -6: Swinford, Knock Airport, Foxford, Bunnyconnellan, Kiltimagh and Lough Talt.                      There are also many Group Water Scheme abstractions in the WMU.</p> </td> </tr> </table>		Nutrient sources	Over 80% of Total Phosphorus generated in the catchment is diffuse in nature with agriculture accounting for over 70% of TP.	Point pressures	<p><b>WWTP – 15:</b> 10 WWTP in Mayo: Ballina, Bohola, Bunnyconnellan, Charlestown, Foxford, Kilkelly, Kiltimagh, Knock Airport, Knock, Swinford.                      5 WWTP in Sligo: Aclare, Curry, Enniscrone, Cloonacool and Tubbercurry.  <b>Section 4 Licensed Facilities– 12 :</b> Mayo: 9 Section 4 licenses – Western Care (St John's Centre), St. Attracta's Nursing Home, Western Care, Breaffy National School, Mount Falcon Castle, T J Grady Ltd, Providence Woollen Mills, O'Dwyer Cheshire Home, Western Brand Chickens – all discharging to groundwater.                      Sligo: 3 Section 4's licensed facilities (Hotel, fish farm &amp; seaweed baths)  <b>IPPC Licensed Facilities</b> – 1: Sligo: Basta 1 IPPC (at Proposed Determination Stage)  <b>WTP</b> -6: Swinford, Knock Airport, Foxford, Bunnyconnellan, Kiltimagh and Lough Talt.                      There are also many Group Water Scheme abstractions in the WMU.</p>
Nutrient sources	Over 80% of Total Phosphorus generated in the catchment is diffuse in nature with agriculture accounting for over 70% of TP.						
Point pressures	<p><b>WWTP – 15:</b> 10 WWTP in Mayo: Ballina, Bohola, Bunnyconnellan, Charlestown, Foxford, Kilkelly, Kiltimagh, Knock Airport, Knock, Swinford.                      5 WWTP in Sligo: Aclare, Curry, Enniscrone, Cloonacool and Tubbercurry.  <b>Section 4 Licensed Facilities– 12 :</b> Mayo: 9 Section 4 licenses – Western Care (St John's Centre), St. Attracta's Nursing Home, Western Care, Breaffy National School, Mount Falcon Castle, T J Grady Ltd, Providence Woollen Mills, O'Dwyer Cheshire Home, Western Brand Chickens – all discharging to groundwater.                      Sligo: 3 Section 4's licensed facilities (Hotel, fish farm &amp; seaweed baths)  <b>IPPC Licensed Facilities</b> – 1: Sligo: Basta 1 IPPC (at Proposed Determination Stage)  <b>WTP</b> -6: Swinford, Knock Airport, Foxford, Bunnyconnellan, Kiltimagh and Lough Talt.                      There are also many Group Water Scheme abstractions in the WMU.</p>						
STATUS/IMPACTS		<table border="1" style="width: 100%; border-collapse: collapse;"> <tr> <td style="width: 15%; padding: 5px;">Wastewater Treatment Plants (WWTP) and Industrial Discharges</td> <td style="padding: 5px;"> <p><b>Aclare WWTP</b> – Sufficient capacity exists  <b>Ballina WWTP</b> – no known risk - WWTP upgrade and additional SWO works substantially complete. Included in the Needs Assessment 2009-2011. Design p.e. 25,000. Waste Water Discharge Licence No: D0016-01. Plant requires implementation of performance management system  <b>Cloonacool WWTP</b> – Scheme built in recent years, uptake on connections to sewer is slow.  <b>Charlestown WWTP</b> - risks to water quality relating to insufficient WWTP capacity, insufficient assimilative capacity and deterioration of Q value downstream of the discharge. WWTP upgrade is included in Needs Assessment 2009-2011. This upgrade will include for nutrient removal, tertiary treatment and the situation in relation to the existing receiving waters will be reviewed. The existing capacity will be increased from 1,200 p.e. to 4,000 p.e.. Plant requires capital works and implementation of performance management system  <b>Foxford WWTP</b> - risks to water quality relating to future WWTP capacity. WWTP upgrade is included in the Needs Assessment 2009-2011. Design p.e. 1,360 proposed p.e. 4,500. Plant requires capital works and implementation of performance management system  <b>Kilkelly WWTP</b> – Ensure capacity is not exceeded  <b>Kiltimagh WWTP</b> - risks to water quality relating to insufficient future WWTP capacity and downstream Q value Q3 (2005 data), 1.8km downstream of the WWTP, while Q-rating upstream is 4. WWTP upgrade is included in the Needs Assessment 2009-2011. DBO contract signed in Nov 2009. This upgrade will increase the existing capacity from 1,610 p.e. to 3,300 p.e. and also includes tertiary treatment. Plant requires capital works.  <b>Knock WWTP</b> - risks to water quality relating to insufficient assimilative capacity in the receiving waters and downstream Q value of 2-3, approximately 1.1km downstream of discharge point. Not included in the Needs Assessment 2009-2011. The possibility of extending the outfall will be examined and funding will be applied for under small schemes program or other similar funding programs, if necessary. Plant requires the investigation of CSO's.  <b>Swinford WWTP</b> - risks to water quality relating to insufficient assimilative capacity in the receiving waters. Not included in the Needs Assessment 2009-2011. The possibility of extending the outfall will be examined and funding will be applied for under small schemes program or other similar funding programs, if necessary. Agglomerations requires further investigation prior to capital works, plant requires implementation of performance management system  <b>Tubbercurry WWTP</b> - risks to water quality relating to insufficient assimilative capacity in the receiving water and downstream Q value less than 4 within 3 km of outfall. Plant requires capital works and the investigation of CSO's.  <b>Section 4</b> licensed facility - 1 Section 4 meat processing factory - risks to water quality relating to insufficient assimilative capacity in receiving waters. No known risks identified from the other 8 licenses within the Mayo portion of the WMU.                      In addition there are 4 Section 16 licenses to discharge to sewers within the Mayo portion of the WMU  <b>IPPC</b> - 1 IPPC licensed facility - Possible risks to water quality relating to insufficient assimilative capacity in receiving waters and u/s to d/s deterioration in Q value within 3km of outfall. 1 IPPC is also at 'Proposed Determination Stage', potential risk to waters.</p> </td> </tr> </table>		Wastewater Treatment Plants (WWTP) and Industrial Discharges	<p><b>Aclare WWTP</b> – Sufficient capacity exists  <b>Ballina WWTP</b> – no known risk - WWTP upgrade and additional SWO works substantially complete. Included in the Needs Assessment 2009-2011. Design p.e. 25,000. Waste Water Discharge Licence No: D0016-01. Plant requires implementation of performance management system  <b>Cloonacool WWTP</b> – Scheme built in recent years, uptake on connections to sewer is slow.  <b>Charlestown WWTP</b> - risks to water quality relating to insufficient WWTP capacity, insufficient assimilative capacity and deterioration of Q value downstream of the discharge. WWTP upgrade is included in Needs Assessment 2009-2011. This upgrade will include for nutrient removal, tertiary treatment and the situation in relation to the existing receiving waters will be reviewed. The existing capacity will be increased from 1,200 p.e. to 4,000 p.e.. Plant requires capital works and implementation of performance management system  <b>Foxford WWTP</b> - risks to water quality relating to future WWTP capacity. WWTP upgrade is included in the Needs Assessment 2009-2011. Design p.e. 1,360 proposed p.e. 4,500. Plant requires capital works and implementation of performance management system  <b>Kilkelly WWTP</b> – Ensure capacity is not exceeded  <b>Kiltimagh WWTP</b> - risks to water quality relating to insufficient future WWTP capacity and downstream Q value Q3 (2005 data), 1.8km downstream of the WWTP, while Q-rating upstream is 4. WWTP upgrade is included in the Needs Assessment 2009-2011. DBO contract signed in Nov 2009. This upgrade will increase the existing capacity from 1,610 p.e. to 3,300 p.e. and also includes tertiary treatment. Plant requires capital works.  <b>Knock WWTP</b> - risks to water quality relating to insufficient assimilative capacity in the receiving waters and downstream Q value of 2-3, approximately 1.1km downstream of discharge point. Not included in the Needs Assessment 2009-2011. The possibility of extending the outfall will be examined and funding will be applied for under small schemes program or other similar funding programs, if necessary. Plant requires the investigation of CSO's.  <b>Swinford WWTP</b> - risks to water quality relating to insufficient assimilative capacity in the receiving waters. Not included in the Needs Assessment 2009-2011. The possibility of extending the outfall will be examined and funding will be applied for under small schemes program or other similar funding programs, if necessary. Agglomerations requires further investigation prior to capital works, plant requires implementation of performance management system  <b>Tubbercurry WWTP</b> - risks to water quality relating to insufficient assimilative capacity in the receiving water and downstream Q value less than 4 within 3 km of outfall. Plant requires capital works and the investigation of CSO's.  <b>Section 4</b> licensed facility - 1 Section 4 meat processing factory - risks to water quality relating to insufficient assimilative capacity in receiving waters. No known risks identified from the other 8 licenses within the Mayo portion of the WMU.                      In addition there are 4 Section 16 licenses to discharge to sewers within the Mayo portion of the WMU  <b>IPPC</b> - 1 IPPC licensed facility - Possible risks to water quality relating to insufficient assimilative capacity in receiving waters and u/s to d/s deterioration in Q value within 3km of outfall. 1 IPPC is also at 'Proposed Determination Stage', potential risk to waters.</p>		
Wastewater Treatment Plants (WWTP) and Industrial Discharges	<p><b>Aclare WWTP</b> – Sufficient capacity exists  <b>Ballina WWTP</b> – no known risk - WWTP upgrade and additional SWO works substantially complete. Included in the Needs Assessment 2009-2011. Design p.e. 25,000. Waste Water Discharge Licence No: D0016-01. Plant requires implementation of performance management system  <b>Cloonacool WWTP</b> – Scheme built in recent years, uptake on connections to sewer is slow.  <b>Charlestown WWTP</b> - risks to water quality relating to insufficient WWTP capacity, insufficient assimilative capacity and deterioration of Q value downstream of the discharge. WWTP upgrade is included in Needs Assessment 2009-2011. This upgrade will include for nutrient removal, tertiary treatment and the situation in relation to the existing receiving waters will be reviewed. The existing capacity will be increased from 1,200 p.e. to 4,000 p.e.. Plant requires capital works and implementation of performance management system  <b>Foxford WWTP</b> - risks to water quality relating to future WWTP capacity. WWTP upgrade is included in the Needs Assessment 2009-2011. Design p.e. 1,360 proposed p.e. 4,500. Plant requires capital works and implementation of performance management system  <b>Kilkelly WWTP</b> – Ensure capacity is not exceeded  <b>Kiltimagh WWTP</b> - risks to water quality relating to insufficient future WWTP capacity and downstream Q value Q3 (2005 data), 1.8km downstream of the WWTP, while Q-rating upstream is 4. WWTP upgrade is included in the Needs Assessment 2009-2011. DBO contract signed in Nov 2009. This upgrade will increase the existing capacity from 1,610 p.e. to 3,300 p.e. and also includes tertiary treatment. Plant requires capital works.  <b>Knock WWTP</b> - risks to water quality relating to insufficient assimilative capacity in the receiving waters and downstream Q value of 2-3, approximately 1.1km downstream of discharge point. Not included in the Needs Assessment 2009-2011. The possibility of extending the outfall will be examined and funding will be applied for under small schemes program or other similar funding programs, if necessary. Plant requires the investigation of CSO's.  <b>Swinford WWTP</b> - risks to water quality relating to insufficient assimilative capacity in the receiving waters. Not included in the Needs Assessment 2009-2011. The possibility of extending the outfall will be examined and funding will be applied for under small schemes program or other similar funding programs, if necessary. Agglomerations requires further investigation prior to capital works, plant requires implementation of performance management system  <b>Tubbercurry WWTP</b> - risks to water quality relating to insufficient assimilative capacity in the receiving water and downstream Q value less than 4 within 3 km of outfall. Plant requires capital works and the investigation of CSO's.  <b>Section 4</b> licensed facility - 1 Section 4 meat processing factory - risks to water quality relating to insufficient assimilative capacity in receiving waters. No known risks identified from the other 8 licenses within the Mayo portion of the WMU.                      In addition there are 4 Section 16 licenses to discharge to sewers within the Mayo portion of the WMU  <b>IPPC</b> - 1 IPPC licensed facility - Possible risks to water quality relating to insufficient assimilative capacity in receiving waters and u/s to d/s deterioration in Q value within 3km of outfall. 1 IPPC is also at 'Proposed Determination Stage', potential risk to waters.</p>						
Overall status	<p>River water bodies are mostly at Good status (54) with 24 at High status, 21 at Moderate, 11 at Poor status and 2 at Bad status. (NB river waterbody WE_34_1462 has been split into 3 water bodies all at good status).</p> <p>There are a total of 10 lakes in the WMU and the status is mostly High (3) or Good (5) with 2 at Moderate status classifications. The WMU flows into the Moy Estuary transitional water body which is at Moderate status and Killala Bay coastal water body which is at High status.</p>						
Status elements	<p>Q score (macroinvertebrates) dictates status in the majority of river water bodies, with fish monitoring influencing the status in a small number of water bodies. Where Physico-chemical monitoring is carried out all rivers achieve the high status classification. There is no chemical monitoring in the WMU. Lake monitoring data is available for 2 lakes and the status is dictated by macrophytes and nutrient standards. The remaining 8 lakes within the WMU have their status assigned through extrapolation.</p>						
Status of the main rivers in the WMU	<p>The principle river system in the Moy Water Management Unit is the river Moy. It stretches across most of the WMU. Other rivers in the WMU include the Glenree (Brusna river) and the Behy river.</p> <p>The most recent EPA status classifications (2009) for these rivers indicates that 21% of all river channel length is classed as High, 44% as good, 23% of river length is classed as Moderate 11% Poor and 1% is classed as bad.</p> <p><b>MOY</b> – Tributaries of the River Moy network rise in the south of the WMU around Knock, as far as Charlestown and Cloonacool in the east of the WMU. The majority of rivers in the Moy network are at Good to High status, however, there are Poor and Bad status rivers throughout the system also. In the head waters surrounding Knock, the Yellow river (Knock) and Cloonlavis rivers are at Moderate status. The next part of the river, the Pollagh river is at Good status. Another head water river, the Glore river starts off at Moderate status, becomes Poor status in the uplands and enters Caheer Lough. The section of river from Caheer Lough to Island Lake is also at Poor status. Island Lake and Mannin Lake are both at Moderate status. From Mannin Lake to the Gweestion river, the Glore river is classed at Moderate status. The Trimoge river, also flowing to the Gweestion river is mostly at Moderate status. The Gweestion river itself is at Poor status. Smaller streams entering this river are both at Moderate and Good status. The Strade river, the Oughtagh (Cloonlee river), the Carroward, the Spaddagh river and the Kileen river are all at Good status and enter the main channel of the Moy river. Lough Muck stream, entering the main channel is at Moderate status. Swinford river entering the main channel is also at Moderate status. Most of the main channel of the Moy is at Good to High status. However, the Sonnagh river and the Mullaghanoe river are mainly at Poor status, except for some small Good and hHgh tributaries. The Owengarve river is mostly at High status, with the exception of a small tributary at Bad status. The Eighnagh river, Bellanameen, Lenane river, as well as Lough Talt and Hoe Lough are all at High status. In the upper reaches of the Moy around Cloonacool, the first section of the Owenaher is High status, then the main Owenaher river continues on at Good status. Tributaries at High status include the Lenyvee river and the Loughanaboll river. The Mad river, running through Cloonacool is at Poor status, and enters the main Moy channel, which is at Good status. The Tubbercurry tributary entering the main channel is at Bad status. From the confluence at the Deel river, the status of the main Moy channel is Moderate until it reaches the sea at the Moy Estuary. The Yellow river (Foxford) entering the Moy is at High status. The Carrowkeribly Lough (Stream) or Owenravagh river, which enters Ballymore Lough is at High status. Ballymore Lough and Carrowkeribly Lough at both classed at Good status. The Owenravagh river between the two lakes is classed as Poor. The section of the Carrowkeribly Lough stream (Bunnafinglas river) which meets the main Moy channel is classed at Good status. As the Moy flows towards Ballina, some small tributaries are classed at Poor status.  <b>SRUFFAUNBROGUE</b> – Sruffaunbrogue river is classed at Moderate status and flows into the Moy Estuary.  <b>GLENREE (BRUSNA)</b> – Most of the river network of the Glenree is at Good status, with the upper section at high status.  <b>LEAFFONEY</b> – Leaffoney river flows to Killala Bay and is at Good status.  <b>BELLAWADDY</b> – Bellawaddy river is classed at Good status and flows into Killala Bay.  <b>DEVLIN</b> – Devlin river is classed at Good status and flows into Killala Bay.</p>						

# Moy Water Management Unit Action Plan

PRESSURES / RISKS	
Quarries, Mines & Landfills	<p><b>18 quarries</b> within WMU - but no water bodies at risk within WMU. 1 inactive quarry.</p> <p><b>1 Landfill</b> within WMU - Rathroeen Landfill</p> <p>No mines within WMU.</p>
Agriculture	<p>There are 28 water bodies at risk from agriculture within WMU: IE_WE_34_2464, IE_WE_34_1106, IE_WE_34_2180, IE_WE_34_3984, IE_WE_34_3250, IE_WE_34_1454, IE_WE_34_2001, IE_WE_34_3982, IE_WE_34_2285, IE_WE_34_3963, IE_WE_34_2188, IE_WE_34_3377, IE_WE_34_1461, IE_WE_34_3035, IE_WE_34_2633, IE_WE_34_3172, IE_WE_34_3069, IE_WE_34_3086, IE_WE_34_2499, IE_WE_34_3791, IE_WE_34_731, IE_WE_34_3108, IE_WE_34_2025, IE_WE_34_3962, IE_WE_34_2261, IE_WE_34_3271, IE_WE_34_3030, IE_WE_34_3990.</p>
On-site systems	<p>There are 14,144 OSWTS within the WMU Boundary, 13,307 OSWTS lie within 112 river water bodies. Within the river water bodies 555 OSWTS constitute a potential risk to waters because of where they are sited and constitute a risk to 5 water bodies. The remainder of OSWTS lie in the coastal area between the RWBs and the seashore and may pose a risk to estuarine and coastal water quality and protected areas. At risk RWB's: WE_34_290, WE_34_3984, WE_34_1454, WE_34_3999, WE_34_2256</p>
Forestry	<p>There is 1 waterbody at risk from forestry within WMU: IE_WE_34_3060</p> <p>Possible risk associated with forestry in the following river catchments:</p> <ul style="list-style-type: none"> <li>-Upper Dunneil river catchment (WE_35_3210)</li> <li>-Doonbeakin river catchment (WE_35_542)</li> <li>-Mad river catchment (WE_35_3086)</li> <li>-Upper river Easky catchment (WE_35_1416)</li> <li>-Upper river Moy catchment (WE_34_3035) Upstream of Branchfield Bridge.</li> </ul>
Dangerous substances	<p>Dangerous substances may currently be an issue in the Tubbercurry River (this is downstream of IPPC licence and discharge point from Tubbercurry WWTP &amp; Storm-overflow)</p>
Morphology	<p>There are 39 water bodies at risk from morphology within WMU: IE_WE_34_2662, IE_WE_34_2464, IE_WE_34_290, IE_WE_34_1106, IE_WE_34_709, IE_WE_34_1187, IE_WE_34_3984, IE_WE_34_3661, IE_WE_34_3250, IE_WE_34_1454, IE_WE_34_3999, IE_WE_34_3639, IE_WE_34_2001, IE_WE_34_1649, IE_WE_34_2025, IE_WE_34_3963, IE_WE_34_3962, IE_WE_34_2188, IE_WE_34_3377, IE_WE_34_2369, IE_WE_34_648, IE_WE_34_1395, IE_WE_34_3864, IE_WE_34_2202, IE_WE_34_2497, IE_WE_34_3150, IE_WE_34_2633, IE_WE_34_2868, IE_WE_34_2870, IE_WE_34_2952, IE_WE_34_2869, IE_WE_34_3956, IE_WE_34_808, IE_WE_34_3069, IE_WE_34_2264, IE_WE_34_3160, IE_WE_34_2499, IE_WE_34_1968, IE_WE_34_3990</p>
Abstractions	
Other	<p>There are no HMWB or AWB within the WMU.</p>

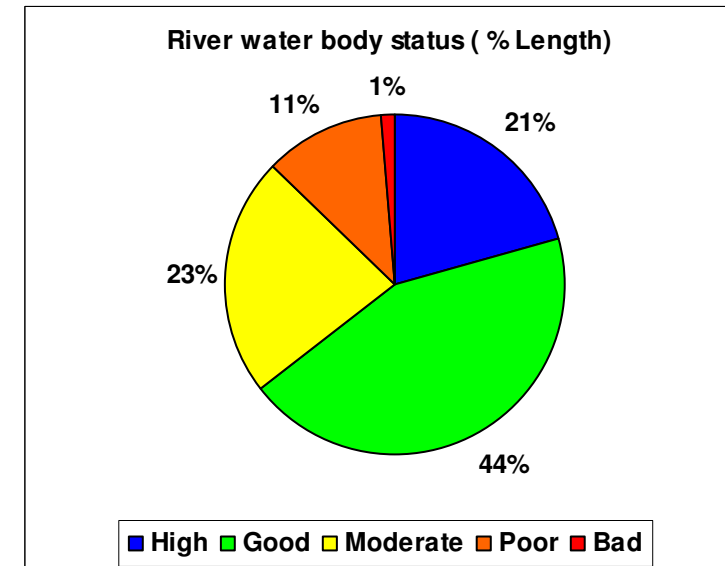
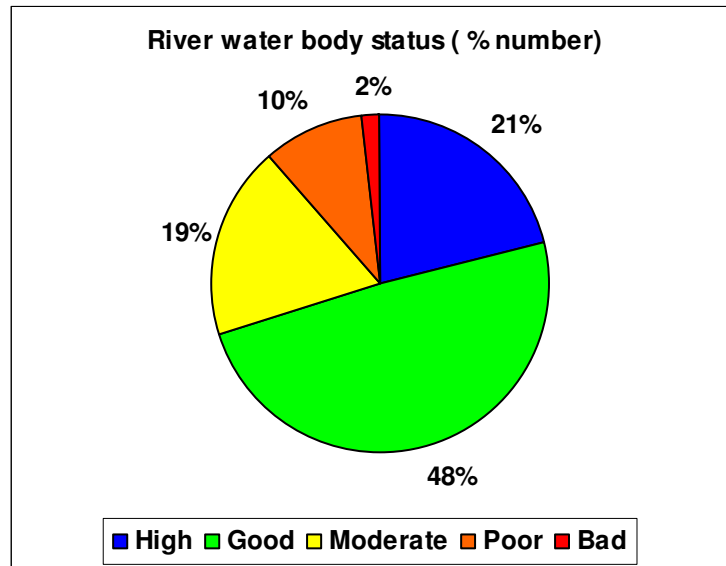
# Moy Water Management Unit Action Plan

SELECTED ACTION PROGRAMME	
<i>NB All relevant basic measures and general supplementary measures/surveys apply</i>	
Point Sources	<p>WWTP licensing and upgrades will be applied where identified in the needs assessment. Charlestown, Kiltimagh, Tubbercurry and Foxford WWTP's are prioritised for capital works upgrades as these schemes are assessed as necessary to ensure compliance with the Water Framework Directive. Charlestown, Foxford and Kiltimagh WWTP are also part of WSIP 2007-2009.</p> <p>Investigation of sewage and trade discharges and licence review where appropriate will also be required, both in relation to Local Authority and EPA licensed facilities. The following point source supplementary measures have been suggested for certain river water bodies within the WMU for municipal and industrial pressures: Capital works, Investigation prior to capital works. Investigation of CSO's and Ensure Capacity of treatment plant is not exceeded.</p> <p>Implementation of pollution reduction programmes for Shellfish Waters, Implementation of an Appropriate Performance Management System, Implementation of Bathing Waters Regulations.</p>
Diffuse Sources	<p>Particular measures will be required to address diffuse pollution pressures from agriculture such as the Good Agricultural Practices Regulations investigations and enforcement.</p> <p>Supplementary measures apply within WMU for septic tanks (OSWWTS) including compliance with the new binding EPA Code of Practice for Wastewater Treatment Systems and Disposal Systems.</p> <p>In relation to existing unsewered properties, improvements are required regarding the operational performance, maintenance and monitoring arrangements of septic tanks and other on-site waste water treatment systems serving such properties. In response, the Minister for Environment, Heritage and Local Government intends to bring forward and consult on proposals for legislation during 2010. It is intended that this legislation will be in place by quarter 3 of 2010. The proposed legislation will provide standards for the performance, operation and maintenance of septic tanks and similar on-site wastewater treatment systems. It will also provide for the monitoring and inspection of the performance of such treatment systems and will set out the responsibilities of households served by those systems, including requirements to carry out remedial actions where necessary. Forestry supplementary measures include riparian zone management, enhanced sediment control and drainage management to address sedimentation pressures.</p>
Other	<p>Supplementary measures that apply for morphology include: channelisation investigation and remediation.</p> <p>Protection of drinking waters and future abstraction licensing control will also be important basic measures required to ensure good water quality.</p> <p>The risk from quarries in the WMU should be investigated further prior to selecting measures for this pressure.</p> <p>The impact of Dangerous Substances in the Tubbercurry River Should be investigated. Channel enhancement measures to assist recovery from impact due to channelisation on WE_34_1187, WE_Moy_Owenravagh_Kildermot</p>

OBJECTIVES	
Good status 2015	
Alternative Objectives	<p><b>Heavily Modified/Artificial water bodies</b> - none.</p> <p><b>Extensions Agriculture (Phosphorous Karst Groundwater) (2021)</b>            IE_WE_34_613, IE_WE_34_2180, IE_WE_34_709, IE_WE_34_3984, IE_WE_34_1454, IE_WE_34_3982, IE_WE_34_2025, IE_WE_34_3962,            IE_WE_34_2188, IE_WE_34_2207, IE_WE_34_587, IE_WE_34_2497, IE_WE_34_3069, IE_WE_34_2499, IE_WE_34_1106, IE_WE_34_1187,            IE_WE_34_2001, IE_WE_34_1649, IE_WE_34_3963, IE_WE_34_1461</p> <p><b>Extension Morphology (Channelisation) (2021)</b>            IE_WE_34_1187</p> <p><b>Extensions required for wastewater infrastructure to be put in place (2021)</b>            IE_WE_34_2633, IE_WE_34_2464, IE_WE_34_3982, IE_WE_34_3069</p> <p><b>Extensions for Status Recovery due to prolonged timescale for improvement due to measures to manifest (Poor and Bad status water bodies) (2021)</b>            IE_WE_34_3791, IE_WE_34_731, IE_WE_34_2285, IE_WE_34_2,            IE_WE_34_3086</p>

# Moy Water Management Unit Action Plan

## Status of river water bodies within the WMU



IE_WE_Moy																		
Member State Code	Monitored Y (Extrapolated N)	Donor Waterbody	Biological Elements				Supporting Elements				Ecological Status	Chemical Status	Protected Areas				Objective	Date objective to be achieved
			Macroinvertebrates (Q)	FreshWater Pearl Mussel	Fish	Phytoplankton (Diatoms)	Morphology	Specific Pollutants	Physio-chemical	Special Area of Conservation			Special Protection Area	Nutrient Sensitive Waters	Drinking Water			
WE_34_1106	N	WE_34_2001								P						GES	2021	
WE_34_1131	N	WE_34_3661								G						GES	2009	
WE_34_1187	Y		G		P					P						GES	2021	
WE_34_1207	N	WE_34_562								H		Y				HES	2009	
WE_34_1266	N	WE_34_3661								G						GES	2009	
WE_34_1315	N	WE_34_2652								M		Y				GES	2015	
WE_34_1363	N	WE_34_3956								G						GES	2009	
WE_34_1395	N	WE_34_1462								G						GES	2009	
WE_34_1454	N	WE_34_3069								M		Y				GES	2021	
WE_34_1461	Y		P						H	P		Y				GES	2021	
WE_34_1462_1	Y		G					H	H	G	G	Y				GES	2009	
WE_34_1462_2	Y		G					H	H	G	G	Y				GES	2009	
WE_34_1462_3	Y		G			G		H	H	G	G	Y				GES	2009	
WE_34_1476	N	WE_34_1462								G						GES	2009	
WE_34_1649	N	WE_34_1187								P						GES	2021	
WE_34_171	N	WE_34_3552								H						HES	2009	
WE_34_1868	N	WE_34_1957								G		Y				GES	2009	

# Moy Water Management Unit Action Plan

IE_WE_Moy																	
Member State Code	Monitored Y (Extrapolated N)	Donor Waterbody	Biological Elements				Supporting Elements				Protected Areas					Objective	Date objective to be achieved
			Macroinvertebrates (Q)	FreshWater Pearl Mussel	Fish	Phytoplankton (Diatoms)	Morphology	Specific Pollutants	Physio-chemical	Ecological Status	Chemical Status	Special Area of Conservation	Special Protection Area	Nutrient Sensitive Waters	Drinking Water		
WE_34_1935	Y		G			G	M	H	H	G	G	Y				GES	2009
WE_34_1956	N	WE_34_1957								G		Y				GES	2009
WE_34_1957	Y				G					G		Y				GES	2009
WE_34_1968	N	WE_34_2865								G						GES	2009
WE_34_1993	N	WE_34_3956								G						GES	2009
WE_34_2	Y		P						H	P		Y				GES	2021
WE_34_2001	Y		P							G	P					GES	2021
WE_34_2025	N	WE_30_39								M						GES	2021
WE_34_2180	Y		M							H	M	Y				GES	2021
WE_34_2188	Y		M							H	M	Y		Y		GES	2021
WE_34_2200	N	WE_34_3956								G		Y				GES	2009
WE_34_2202	Y		G							H	G	Y				GES	2009
WE_34_2207	Y		M							H	M	Y				GES	2021
WE_34_2243	N	WE_34_2369								G						GES	2009
WE_34_2256	N	WE_34_648								H						HES	2009
WE_34_2259	Y		H							H		Y				HES	2009
WE_34_2261	N	WE_34_3271								G		Y				GES	2009
WE_34_2264	Y		H							H	H	Y				HES	2009
WE_34_2285	N	WE_34_3791								P		Y				GES	2021
WE_34_2317	N	WE_34_2207								M						GES	2015
WE_34_2336	N	WE_34_2369								G						GES	2009
WE_34_2361	N	WE_34_3956								G						GES	2009
WE_34_2369	Y		G							G						GES	2009
WE_34_2405	Y		H							H		Y				HES	2009
WE_34_2441	Y		H							H		Y				HES	2009
WE_34_2464	Y		P							G	P	Y				GES	2021
WE_34_2487	N	WE_34_2441								H		Y				HES	2009
WE_34_2497	Y		M							M		Y				GES	2021
WE_34_2499	Y		M							G	M					GES	2021
WE_34_2536	Y		H					H		G	H	Y				HES	2009

# Moy Water Management Unit Action Plan

IE_WE_Moy																	
Member State Code	Monitored Y (Extrapolated N)	Donor Waterbody	Biological Elements				Supporting Elements				Chemical Status	Protected Areas				Objective	Date objective to be achieved
			Macroinvertebrates (Q)	FreshWater Pearl Mussel	Fish	Phytobenthos (Diatoms)	Morphology	Specific Pollutants	Physio-chemical	Ecological Status		Special Area of Conservation	Special Protection Area	Nutrient Sensitive Waters	Drinking Water		
WE_34_261	N	WE_34_3271								G		Y			GES	2009	
WE_34_2633	Y		B			M		H	M	B	G				GES	2021	
WE_34_2652	Y		M							M		Y			GES	2015	
WE_34_2662	Y		M							M					GES	2015	
WE_34_2865	Y		H		G				H	G					GES	2009	
WE_34_2868	Y		H							H		Y			HES	2009	
WE_34_2869	Y		G							G		Y			GES	2009	
WE_34_2870	N	WE_34_3999								G		Y			GES	2009	
WE_34_290	N	WE_34_2202								G		Y			GES	2009	
WE_34_2927	N	WE_34_2933								G					GES	2009	
WE_34_2933	Y		G							G					GES	2009	
WE_34_2936	Y		H							H		Y			HES	2009	
WE_34_2952	N	WE_34_2868								H		Y			HES	2009	
WE_34_3029	N	WE_34_2652								M		Y			GES	2015	
WE_34_3030	N	WE_34_3172								G					GES	2009	
WE_34_3035	Y		G			H	G	H	H	G	G	Y			GES	2009	
WE_34_3052	N	WE_34_2536								H		Y			HES	2009	
WE_34_3060	N	WE_34_2850								H		Y			HES	2009	
WE_34_3069	Y		M						H	M					GES	2021	
WE_34_3086	Y		P						H	P		Y			GES	2021	
WE_34_3108	N	WE_34_3172								G					GES	2009	
WE_34_3150	N	WE_35_1027								G		Y			GES	2009	
WE_34_3160	N	WE_34_648								H		Y			HES	2009	
WE_34_3172	Y		G						H	G					GES	2009	
WE_34_3178	N	WE_34_3956								G					GES	2009	
WE_34_3250	Y								G	G					GES	2009	
WE_34_3252	Y		G						H	G			Y		GES	2009	
WE_34_3264	N	WE_34_2369								G					GES	2009	
WE_34_3271	Y								G	G		Y			GES	2009	
WE_34_3283	N	WE_35_1843								H		Y			HES	2009	

# Moy Water Management Unit Action Plan

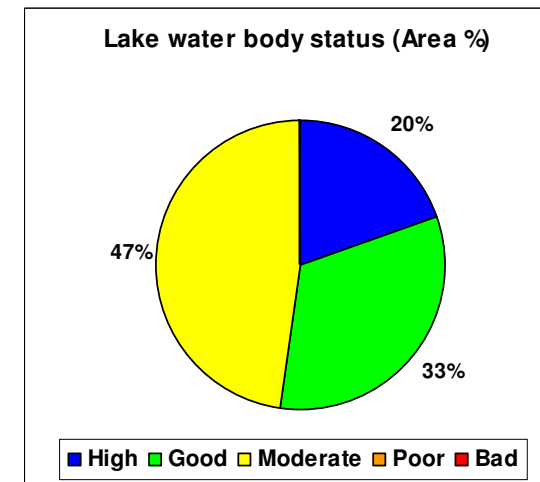
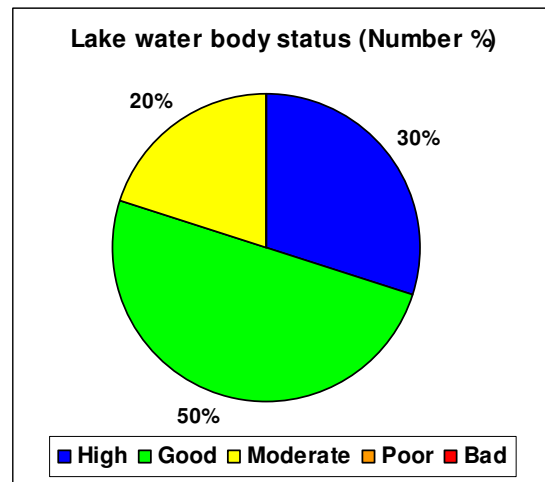
IE_WE_Moy																	
Member State Code	Monitored Y (Extrapolated N)	Donor Waterbody	Biological Elements				Supporting Elements				Protected Areas					Objective	Date objective to be achieved
			Macroinvertebrates (Q)	FreshWater Pearl Mussel	Fish	Phytoplankton (Diatoms)	Morphology	Specific Pollutants	Physio-chemical	Ecological Status	Chemical Status	Special Area of Conservation	Special Protection Area	Nutrient Sensitive Waters	Drinking Water		
WE_34_3323	N	WE_34_2405								H		Y				HES	2009
WE_34_334	N	WE_34_2441								H		Y				HES	2009
WE_34_3377	Y		G							G						GES	2009
WE_34_3421	Y									M						GES	2015
WE_34_3552	Y		H						H	H		Y				HES	2009
WE_34_3639	N	WE_34_2869								G						GES	2009
WE_34_3661	Y		G							G		Y				GES	2009
WE_34_3723	N	WE_34_2869								G						GES	2009
WE_34_3791	Y		B						M	B						GES	2021
WE_34_3856	N	WE_34_882								G		Y				GES	2009
WE_34_3864	N	WE_34_2369								G		Y				GES	2009
WE_34_3870	N	WE_34_2405								H						HES	2009
WE_34_3930	N	WE_34_3552								H		Y				HES	2009
WE_34_3956	Y		G						H	G		Y				GES	2009
WE_34_3962	N	WE_30_39								M		Y				GES	2021
WE_34_3963	Y		P							P						GES	2021
WE_34_3982	Y		M			G		H	H	M	G	Y				GES	2021
WE_34_3984	N	WE_34_3982								M						GES	2021
WE_34_3986	Y		G						H	G		Y				GES	2009
WE_34_3990	N	WE_34_3172								G			Y			GES	2009
WE_34_3999	Y		H			G	M	H	G	G	G					GES	2009
WE_34_546	N	WE_34_3956								G						GES	2009
WE_34_556	N	WE_34_3956								G						GES	2009
WE_34_562	Y		H							H		Y				HES	2009
WE_34_566	N	WE_34_2369								G						GES	2009
WE_34_587	N	WE_34_2207								M						GES	2021
WE_34_613	N	WE_34_2497								M						GES	2021
WE_34_648	Y		H						H	H		Y				HES	2009
WE_34_709	N	WE_34_2497								M						GES	2021
WE_34_731	N	WE_34_3086								P						GES	2021

# Moy Water Management Unit Action Plan

IE_WE_Moy																
Member State Code	Monitored Y (Extrapolated N)	Donor Waterbody	Biological Elements			Supporting Elements				Chemical Status	Protected Areas				Objective	Date objective to be achieved
			Macroinvertebrates (Q)	FreshWater Pearl Mussel	Fish	Phytobenthos (Diatoms)	Morphology	Specific Pollutants	Physio-chemical		Ecological Status	Special Area of Conservation	Special Protection Area	Nutrient Sensitive Waters		
WE_34_749	N	WE_34_2207								M					GES	2015
WE_34_808	N	WE_34_1957								G					GES	2009
WE_34_822	N	WE_35_3951								G	Y				GES	2009
WE_34_837	N	WE_34_2369								G					GES	2009
WE_34_874	N	WE_34_2536								H					HES	2009
WE_34_882	Y		G						H	G	Y				GES	2009

# Moy Water Management Unit Action Plan

## Status of lake water bodies within WMU



IE_WE_Moy																	
Member State Code	Name	Monitored Y (Extrapolated N)	Biological Elements			Supporting Elements			Ecological Status	Chemical Status	Protected Areas					Objective	Date objective to be achieved
			Macrophytes	Chlorophyll	Fish	Morphology	Nutrient Enrichment	Physico Chemical			Special Area of Conservation	Special Protection Area	Nutrient Sensitive Waters	Bathing Water	Drinking Water		
WE_34_297	Tullyvella Loughs	N							H		Y					HES	2009
WE_34_315	Caheer ( Lough )	N							G							GES	2009
WE_34_334	Island Lake	N							M		Y					GES	2021
WE_34_391	Ballymore Lough	N							G							GES	2009
WE_34_393	Callow Lough	N							G							GES	2009
WE_34_398	Mannin Lake	N							M		Y					GES	2021
WE_34_405	Talt ( Lough )	Y	H	H			H	H	H		Y				Y	HES	2009
WE_34_458	Holan ( Lough )	Y		H			G	G	G						Y	GES	2009
WE_34_773	Hoe ( Lough )	N							H		Y					HES	2009
WE_34_809	Carrowkeribly Lough	N							G							GES	2009